

Datasheet for ABIN185279  
**anti-TXNDC5 antibody (C-Term)**

## 5 Images

[Go to Product page](#)

## Overview

Quantity:	100 µg
Target:	TXNDC5
Binding Specificity:	C-Term
Reactivity:	Human
Host:	Goat
Clonality:	Polyclonal
Conjugate:	This TXNDC5 antibody is un-conjugated
Application:	Western Blotting (WB), ELISA, Immunohistochemistry (IHC), Immunofluorescence (IF), Flow Cytometry (FACS)

## Product Details

Purpose:	EndoPDI / TXNDC5
Immunogen:	Peptide with sequence C-SLHRFVLSQAKDEL, from the C Terminus of the protein sequence according to NP_110437.2, NP_001139021.1.
Sequence:	SLHRFVLSQA KDEL
Isotype:	IgG
Specificity:	This antibody is expected to be able to recognise both reported human isoforms, as represented by NP_110437.2, NP_001139021.1.
Cross-Reactivity:	Human
Purification:	Purified from goat serum by ammonium sulphate precipitation followed by antigen affinity

## Product Details

chromatography using the immunizing peptide.

Grade: Verified

## Target Details

Target: TXNDC5

Alternative Name: TXNDC5 ([TXNDC5 Products](#))

Background: TXNDC5, EndoPDI, thioredoxin domain containing 5, ERP46, UNQ364, MGC3178, FLJ21353, FLJ90810, thioredoxin related protein, endothelial protein disulphide, thioredoxin domain containing 5 (endoplasmic reticulum) isomerase, Hcc-2, PDIA15, endothelial protei

Gene ID: 81567

NCBI Accession: [NP\\_110437](#), [NP\\_001139021](#)

Pathways: [Cell RedoxHomeostasis](#)

## Application Details

Application Notes: Immunohistochemistry: Paraffin embedded Human Small Intestine. Recommended concentration: 3.75 µg/mL.

Western Blot: Approx 50 kDa band observed in lysates of cell lines HEK293, A549, HeLa and HepG2 (calculated MW of 47.6 kDa according to NP\_110437.2). This molecular weight is routinely observed by other sources. Recommended concentration: 0.01-0.1 µg/mL. Pr

Peptide ELISA: antibody detection limit dilution 1:64000.

Comment: **Immunofluorescence:** Strong expression of the protein seen in the endoplasmic reticulum of U2OS and HeLa cells. Recommended concentration: 10µg/ml.

**Flow Cytometry:** Flow cytometric analysis of HeLa cells. Recommended con

Restrictions: For Research Use only

## Handling

Format: Liquid

Concentration: 0.5 mg/mL

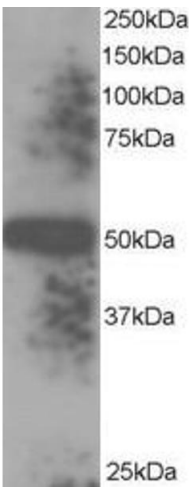
Buffer: Supplied at 0.5 mg/mL in Tris saline, 0.02 % sodium azide, pH 7.3 with 0.5 % bovine serum albumin.

Preservative: Sodium azide

## Handling

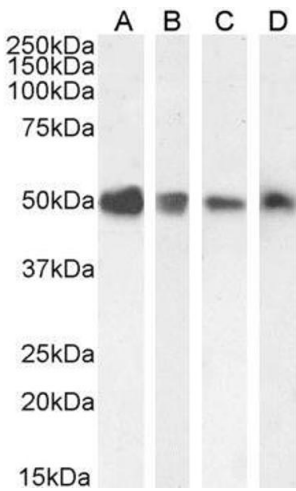
Precaution of Use:	This product contains Sodium azide: a POISONOUS AND HAZARDOUS SUBSTANCE which should be handled by trained staff only.
Handling Advice:	Minimize freezing and thawing.
Storage:	-20 °C
Storage Comment:	Aliquot and store at -20°C, with minimal freeze/thawing. A working aliquot may be refrigerated at 4°C for a few weeks and still remain viable.

## Images



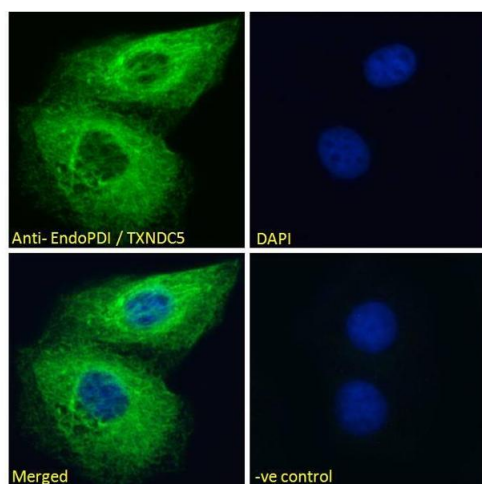
### Western Blotting

**Image 1.** ABIN185279 staining (0.1µg/ml) of human placenta lysate (RIPA buffer, 35µg total protein per lane). Primary incubated for 1 hour. Detected by western blot using chemiluminescence.



### Western Blotting

**Image 2.** ABIN185279 staining (0.1µg/ml) of HEK293 (A), A549 (B), HeLa (C) and (0.01ug/ml) of HepG2 (D) cell lysate (35µg protein in RIPA buffer). Detected by chemiluminescence.



### Immunofluorescence

**Image 3.** ABIN185279 Immunofluorescence analysis of paraformaldehyde fixed HeLa cells, permeabilized with 0.15% Triton. Primary incubation 1hr (10ug/ml) followed by Alexa Fluor 488 secondary antibody (2ug/ml), showing endoplasmic reticulum staining. The nuclear stain is DAPI (blue). Negative control: Unimmunized goat IgG (10ug/ml) followed by Alexa Fluor 488 secondary antibody (2ug/ml).

Please check the [product details page](#) for more images. Overall 5 images are available for ABIN185279.