

Datasheet for ABIN185280  
**anti-ANTXR1 antibody (C-Term)**[Go to Product page](#)

## 2 Images

## Overview

Quantity:	100 µg
Target:	ANTXR1
Binding Specificity:	C-Term
Reactivity:	Human
Host:	Goat
Clonality:	Polyclonal
Conjugate:	This ANTXR1 antibody is un-conjugated
Application:	ELISA, Immunofluorescence (IF)

## Product Details

Purpose:	TEM8 / Anthrax Toxin Receptor 1
Immunogen:	Peptide with sequence C-RAPPPSRPPPRPSV, from the C Terminus of the protein sequence according to NP_115584.1.
Sequence:	RAPPPSRPPP RPSV
Isotype:	IgG
Specificity:	This antibody is expected to recognise variant 1 (NP_115584) only.
Cross-Reactivity:	Cow, Dog, Human, Rat
Purification:	Purified from goat serum by ammonium sulphate precipitation followed by antigen affinity chromatography using the immunizing peptide.
Grade:	Verified

## Target Details

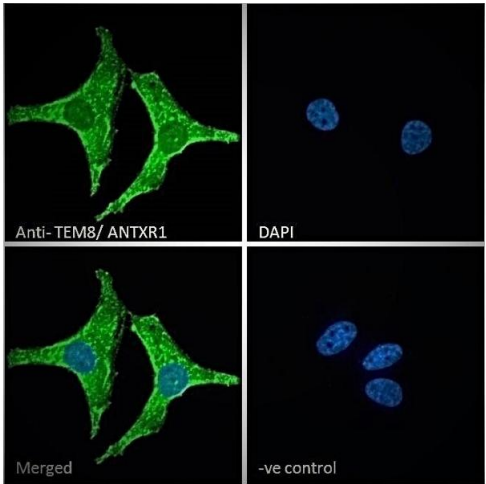
Target:	ANTXR1
Alternative Name:	ANTXR1 ( <a href="#">ANTXR1 Products</a> )
Background:	ANTXR1, TEM8, anthrax toxin receptor, ATR, FLJ10601, FLJ21776, tumor endothelial marker 8, tumor endothelial marker 8, isoform 3 precursor, anthrax toxin receptor 1, FLJ11298, 2310008J16Rik, 2810405N18Rik
Gene ID:	84168
NCBI Accession:	<a href="#">NP_115584</a>

## Application Details

Application Notes:	Western Blot: Preliminary testing showed a band at approx 65-70 kDa in lysate of cell lines A431 and U2OS after 1-2 µg/mL antibody staining (calculated MW of 62.8 kDa according to NP_115584.1). This band was successfully blocked by incubation with the immu Peptide ELISA: antibody detection limit dilution 1:64000.
Comment:	<b>Immunofluorescence:</b> Strong expression of the protein seen in the membrane and cytoplasm of HeLa cells. Recommended concentration: 10µg/ml.
Restrictions:	For Research Use only

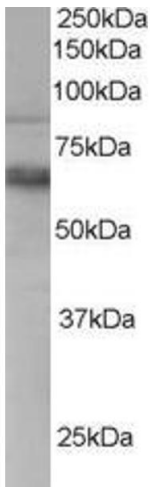
## Handling

Format:	Liquid
Concentration:	0.5 mg/mL
Buffer:	Supplied at 0.5 mg/mL in Tris saline, 0.02 % sodium azide, pH 7.3 with 0.5 % bovine serum albumin.
Preservative:	Sodium azide
Precaution of Use:	This product contains Sodium azide: a POISONOUS AND HAZARDOUS SUBSTANCE which should be handled by trained staff only.
Handling Advice:	Minimize freezing and thawing.
Storage:	-20 °C
Storage Comment:	Aliquot and store at -20°C, with minimal freeze/thawing. A working aliquot may be refrigerated at 4°C for a few weeks and still remain viable.



Immunofluorescence

**Image 1.** ABIN185280 Immunofluorescence analysis of paraformaldehyde fixed HeLa cells, permeabilized with 0.15 % Triton. Primary incubation 1hr (10 µg/mL) followed by Alexa Fluor 488 secondary antibody (2 µg/mL), showing plasma membrane and cytoplasmic staining. The nuc



Western Blotting

**Image 2.** ABIN185280 staining (0.3µg/ml) of Human PBMC lysate (RIPA buffer, 35µg total protein per lane). Primary incubated for 1 hour. Detected by chemiluminescence.