

Datasheet for ABIN185284

anti-Caspase 4 antibody (Internal Region)**2** Images[Go to Product page](#)

Overview

Quantity:	100 µg
Target:	Caspase 4 (CASP4)
Binding Specificity:	Internal Region
Reactivity:	Human
Host:	Goat
Clonality:	Polyclonal
Conjugate:	This Caspase 4 antibody is un-conjugated
Application:	Western Blotting (WB), ELISA

Product Details

Purpose:	CASP4
Immunogen:	Peptide with sequence CKERAEIYPIKERN, from the internal region of the protein sequence according to NP_001216.1, NP_150649.1.
Sequence:	CKERAEIYP IKERN
Isotype:	IgG
Specificity:	This antibody is expected to recognise both isoforms of CASP4 (alpha, represented by NP_001216.1 and gamma, NP_150649.1).
Cross-Reactivity:	Cat, Cow, Dog, Human, Mouse
Purification:	Purified from goat serum by ammonium sulphate precipitation followed by antigen affinity chromatography using the immunizing peptide.

Product Details

Grade: Verified

Target Details

Target: Caspase 4 (CASP4)

Alternative Name: CASP4 ([CASP4 Products](#))

Background: CASP4, TX, ICH-2, Mih1/TX, ICEREL-II, ICE(rel)II, caspase 4, apoptosis-related cysteine protease, apoptotic cysteine protease Mih1/TX, caspase 4

Gene ID: 837

NCBI Accession: [NP_001216](#), [NP_150649](#)

Pathways: [Apoptosis](#), [Caspase Cascade in Apoptosis](#), [Positive Regulation of Endopeptidase Activity](#)

Application Details

Application Notes: Western Blot: Approx 40 kDa band observed in Human Heart lysates (calculated MW of 43.3 kDa according to NP_001216.1). Recommended concentration: 0.3-1 µg/mL.
Peptide ELISA: antibody detection limit dilution 1:16000.

Restrictions: For Research Use only

Handling

Format: Liquid

Concentration: 0.5 mg/mL

Buffer: Supplied at 0.5 mg/mL in Tris saline, 0.02 % sodium azide, pH 7.3 with 0.5 % bovine serum albumin.

Preservative: Sodium azide

Precaution of Use: This product contains Sodium azide: a POISONOUS AND HAZARDOUS SUBSTANCE which should be handled by trained staff only.

Handling Advice: Minimize freezing and thawing.

Storage: -20 °C

Storage Comment: Aliquot and store at -20°C, with minimal freeze/thawing. A working aliquot may be refrigerated at 4°C for a few weeks and still remain viable.

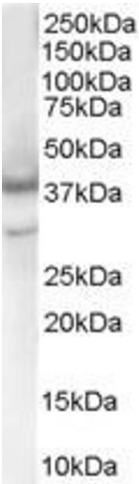


Image 1. ABIN185284 (1µg/ml) staining of Human Brain lysate (35µg protein in RIPA buffer). Primary incubation was 1 hour. Detected by chemiluminescence.



Western Blotting

Image 2. ABIN185284 (0.3µg/ml) staining of Human Heart lysate (35µg protein in RIPA buffer). Primary incubation was 1 hour. Detected by chemiluminescence.