

Datasheet for ABIN185285
anti-SCARF1 antibody (AA 20-31)[Go to Product page](#)

1 Image

Overview

Quantity:	100 µg
Target:	SCARF1
Binding Specificity:	AA 20-31
Reactivity:	Human
Host:	Goat
Clonality:	Polyclonal
Conjugate:	This SCARF1 antibody is un-conjugated
Application:	Western Blotting (WB), ELISA

Product Details

Purpose:	SCARF1 / SREC
Immunogen:	Peptide with sequence SELDPKGQHVC, from the internal region of the protein sequence according to NP_003684.2, NP_663325.1, NP_663327.2.
Sequence:	SELDPKGQHV C
Isotype:	IgG
Specificity:	This antibody is expected to recognise all three reported isoforms (NP_003684.2, NP_663325.1, NP_663327.2). Epitope corresponding to aa 20-31, mapping to the mature human SCARF1 / SREC1 protein.
Cross-Reactivity:	Human
Purification:	Purified from goat serum by ammonium sulphate precipitation followed by antigen affinity

Product Details

chromatography using the immunizing peptide.

Grade: Verified

Target Details

Target: SCARF1

Alternative Name: SCARF1 ([SCARF1 Products](#))

Background: SCARF1, SREC, KIAA0149, MGC47738, scavenger receptor class F, member 1, acetyl LDL receptor, scavenger receptor expressed by endothelial cells

Gene ID: 8578

NCBI Accession: [NP_003684](#), [NP_663325](#), [NP_663327](#)

Application Details

Application Notes: Western Blot: Approx 85-90 kDa band observed in Human Heart lysates (calculated MW of 87.4 kDa according to NP_003684.2). Recommended concentration: 0.3-1.0 µg/mL. Primary incubation was 1 hour. An additional faint band of 28 kDa was consistently observed, Peptide ELISA: antibody detection limit dilution 1:64000.

Restrictions: For Research Use only

Handling

Format: Liquid

Concentration: 0.5 mg/mL

Buffer: Supplied at 0.5 mg/mL in Tris saline, 0.02 % sodium azide, pH 7.3 with 0.5 % bovine serum albumin.

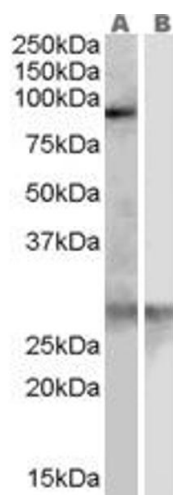
Preservative: Sodium azide

Precaution of Use: This product contains Sodium azide: a POISONOUS AND HAZARDOUS SUBSTANCE which should be handled by trained staff only.

Handling Advice: Minimize freezing and thawing.

Storage: -20 °C

Storage Comment: Aliquot and store at -20°C, with minimal freeze/thawing. A working aliquot may be refrigerated at 4°C for a few weeks and still remain viable.



Western Blotting

Image 1. ABIN185285 (0.3µg/ml) staining of Human Heart lysate (35µg protein in RIPA buffer) with (B) and without (A) blocking with the immunising peptide. Detected by chemiluminescence.