

Datasheet for ABIN185287
anti-EHD2 antibody (C-Term)

6 Images

[Go to Product page](#)

Overview

Quantity:	100 µg
Target:	EHD2
Binding Specificity:	C-Term
Reactivity:	Human
Host:	Goat
Clonality:	Polyclonal
Conjugate:	This EHD2 antibody is un-conjugated
Application:	Western Blotting (WB), ELISA, Immunofluorescence (IF), Flow Cytometry (FACS)

Product Details

Purpose:	EHD2
Immunogen:	Peptide with sequence CRLVPPSKRRHKGSA, from the C Terminus of the protein sequence according to NP_055416.2.
Sequence:	CRLVPPSKRR HKGSA
Isotype:	IgG
Specificity:	This antibody is expected to recognise EHD1 protein as well as EHD2.
Cross-Reactivity:	Cow, Dog, Human, Mouse, Rat
Purification:	Purified from goat serum by ammonium sulphate precipitation followed by antigen affinity chromatography using the immunizing peptide.
Grade:	Verified

Target Details

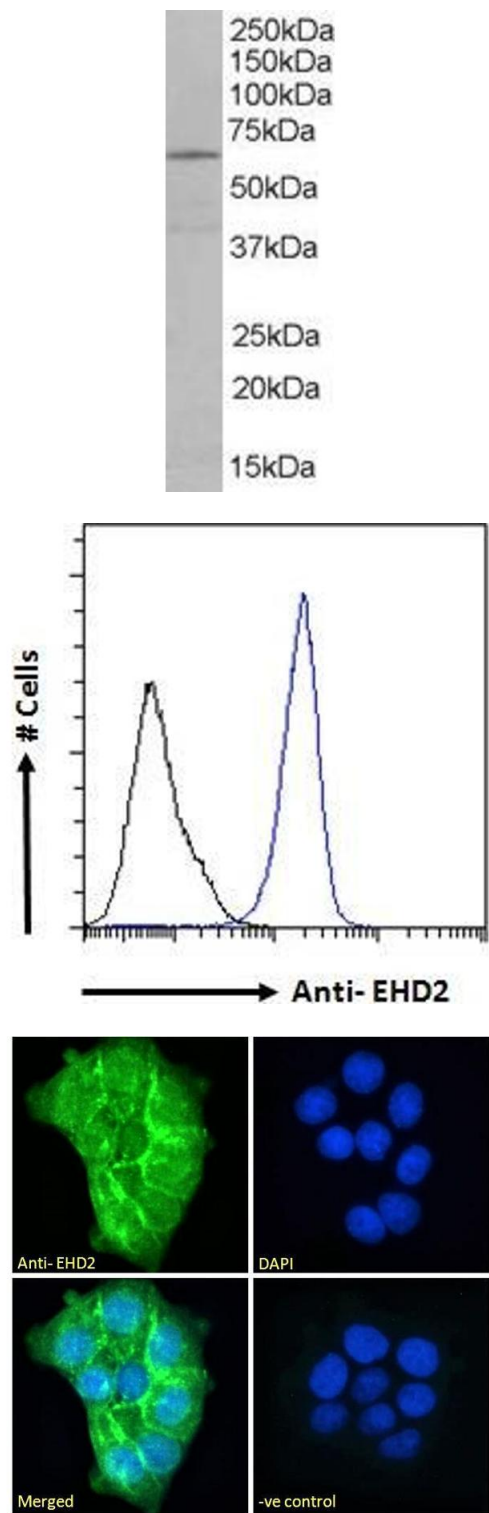
Target:	EHD2
Alternative Name:	EHD2 (EHD2 Products)
Background:	EHD2, PAST2, EH-domain containing 2, EH domain containing 2, FLJ96617
Molecular Weight:	61.2kDa
Gene ID:	30846
NCBI Accession:	NP_055416
Pathways:	Regulation of Muscle Cell Differentiation, Skeletal Muscle Fiber Development

Application Details

Application Notes:	Western Blot: Approx 65-70 kDa band observed in Human Lung lysates and in lysates of cell lines A549 and HeLa (calculated MW of 61.2 kDa according to NP_055416.2). This molecular weight is routinely observed by other sources. Recommended concentration: 0 Peptide ELISA: antibody detection limit dilution 1:64000.
Comment:	Immunofluorescence: Strong expression of the protein seen in the plasma membrane of A431 cells and the nuclei of HeLa cells. Recommended concentration: 10µg/ml. Flow Cytometry: Flow cytometric analysis of A431 cells. R
Restrictions:	For Research Use only

Handling

Format:	Liquid
Concentration:	0.5 mg/mL
Buffer:	Supplied at 0.5 mg/mL in Tris saline, 0.02 % sodium azide, pH 7.3 with 0.5 % bovine serum albumin.
Preservative:	Sodium azide
Precaution of Use:	This product contains Sodium azide: a POISONOUS AND HAZARDOUS SUBSTANCE which should be handled by trained staff only.
Handling Advice:	Minimize freezing and thawing.
Storage:	-20 °C
Storage Comment:	Aliquot and store at -20°C, with minimal freeze/thawing. A working aliquot may be refrigerated at 4°C for a few weeks and still remain viable.



Western Blotting

Image 1. ABIN185287 staining (0.003µg/ml) of human heart lysate (RIPA buffer, 35µg total protein per lane). Primary incubated for 1 hour. Detected by western blot using chemiluminescence.

Flow Cytometry

Image 2. ABIN185287 Flow cytometric analysis of paraformaldehyde fixed A431 cells (blue line), permeabilized with 0.5% Triton. Primary incubation 1hr (10ug/ml) followed by Alexa Fluor 488 secondary antibody (1ug/ml). IgG control: Unimmunized goat IgG (black line) followed by Alexa Fluor 488 secondary antibody.

Immunofluorescence

Image 3. ABIN185287 Immunofluorescence analysis of paraformaldehyde fixed A431 cells, permeabilized with 0.15% Triton. Primary incubation 1hr (10ug/ml) followed by Alexa Fluor 488 secondary antibody (2ug/ml), showing plasma membrane staining. The nuclear stain is DAPI (blue). Negative control: Unimmunized goat IgG (10ug/ml) followed by Alexa Fluor 488 secondary antibody (2ug/ml).

Please check the [product details page](#) for more images. Overall 6 images are available for ABIN185287.