

Datasheet for ABIN185290

anti-FHL1 antibody (AA 233-246)



[Go to Product page](#)

1 Image

Overview

Quantity:	100 µg
Target:	FHL1
Binding Specificity:	AA 233-246
Reactivity:	Human
Host:	Goat
Clonality:	Polyclonal
Conjugate:	This FHL1 antibody is un-conjugated
Application:	Western Blotting (WB), ELISA

Product Details

Purpose:	SLIMMER / FHL1 isoform B
Immunogen:	Peptide with sequence CTVSRVSHPVSKARK, from the internal region of the protein sequence according to AAC72886.1.
Sequence:	CTVSRVSHPV SKARK
Isotype:	IgG
Specificity:	This antibody is specific for the FHL-1 isoform B (SLIMMER) and is expected to recognise an epitope corresponding to aa 233-246 of human SLIMMER protein.
Cross-Reactivity:	Dog, Human, Mouse
Purification:	Purified from goat serum by ammonium sulphate precipitation followed by antigen affinity chromatography using the immunizing peptide.

Product Details

Grade: Verified

Target Details

Target:	FHL1
Alternative Name:	FHL1 (FHL1 Products)
Background:	FHL1, KYO-T, SLIM1, bA535K18.1, four and a half LIM domains 1, Four-and-a-half LIM domains 1, bA535K18.1 (LIM protein SLIMMER), RP11-535K18.1, FHL1A, FHL1B, FLH1A, KYOT, MGC111107, SLIMMER, XMPMA, LIM protein SLIMMER, four-and-a-half Lin11, Isl-1 and Mec-
Gene ID:	2273

Application Details

Application Notes:	Western Blot: Approx 30 kDa band observed in Human Heart lysates is consistent with literature (PMID:10480922, calculated MW of 36.3 kDa according to AAC72886). Recommended concentration: 0.01-0.1 µg/mL. Peptide ELISA: antibody detection limit dilution 1:128000.
Restrictions:	For Research Use only

Handling

Format:	Liquid
Concentration:	0.5 mg/mL
Buffer:	Supplied at 0.5 mg/mL in Tris saline, 0.02 % sodium azide, pH 7.3 with 0.5 % bovine serum albumin.
Preservative:	Sodium azide
Precaution of Use:	This product contains Sodium azide: a POISONOUS AND HAZARDOUS SUBSTANCE which should be handled by trained staff only.
Handling Advice:	Minimize freezing and thawing.
Storage:	-20 °C
Storage Comment:	Aliquot and store at -20°C, with minimal freeze/thawing. A working aliquot may be refrigerated at 4°C for a few weeks and still remain viable.

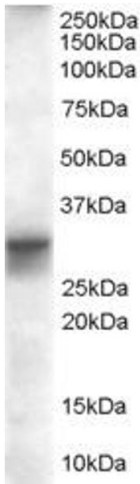


Image 1. ABIN185290 (0.01µg/ml) staining of Human Heart lysate (35µg protein in RIPA buffer). Primary incubation was 1 hour. Detected by chemiluminescence.