

Datasheet for ABIN185291
anti-TIMM50 antibody (AA 396-409)[Go to Product page](#)

2 Images

Overview

Quantity:	100 µg
Target:	TIMM50
Binding Specificity:	AA 396-409
Reactivity:	Human
Host:	Goat
Clonality:	Polyclonal
Conjugate:	This TIMM50 antibody is un-conjugated
Application:	Western Blotting (WB), ELISA

Product Details

Purpose:	TIM50
Immunogen:	Peptide with sequence CDVRTVLEHYALEDD, from the internal region of the protein sequence according to NP_001001563.1.
Sequence:	CDVRTVLEHY ALEDD
Isotype:	IgG
Specificity:	This antibody is expected to recognise an epitope corresponding to aa 396-409 of human TIM50.
Cross-Reactivity:	Cow, Dog, Human, Mouse, Rat
Purification:	Purified from goat serum by ammonium sulphate precipitation followed by antigen affinity chromatography using the immunizing peptide.

Product Details

Grade: Verified

Target Details

Target: TIMM50

Alternative Name: TIMM50 ([TIMM50 Products](#))

Background: TIMM50, TIM50L, translocase of inner mitochondrial membrane 50 homolog (yeast), Tim50-like protein, homolog of yeast Tim50, translocase of inner mitochondrial membrane 50 homolog (S. cerevisiae), MGC102733, TIM50

Gene ID: 92609

NCBI Accession: [NP_001001563](#)

Application Details

Application Notes: Western Blot: Approx 39 kDa in Human Heart lysate (Calculated MW of 50.5 kDa according to NP_001001563.1) . The observed molecular weight corresponds to earlier finding in literature with different antibodies (Guo et al, J Bio Chem 2004 Jun 4,279:24813-2
Peptide ELISA: antibody detection limit dilution 1:128000.

Restrictions: For Research Use only

Handling

Format: Liquid

Concentration: 0.5 mg/mL

Buffer: Supplied at 0.5 mg/mL in Tris saline, 0.02 % sodium azide, pH 7.3 with 0.5 % bovine serum albumin.

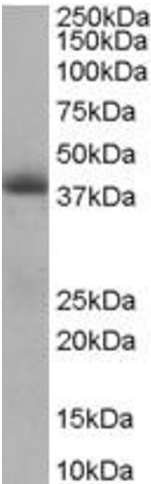
Preservative: Sodium azide

Precaution of Use: This product contains Sodium azide: a POISONOUS AND HAZARDOUS SUBSTANCE which should be handled by trained staff only.

Handling Advice: Minimize freezing and thawing.

Storage: -20 °C

Storage Comment: Aliquot and store at -20°C, with minimal freeze/thawing. A working aliquot may be refrigerated at 4°C for a few weeks and still remain viable.



Western Blotting

Image 1. ABIN185291 staining (0.5 ug/ml) of Human Heart lysate (RIPA buffer, 35 ug total protein per lane). Primary incubated for 1 hour. Detected by western blot using chemiluminescence.



Western Blotting

Image 2. ABIN185291 (1µg/ml) staining of Human Heart lysate (35µg protein in RIPA buffer). Primary incubation was 1 hour. Detected by chemiluminescence.