

Datasheet for ABIN185293
anti-NR1H2 antibody (N-Term)

4 Images

[Go to Product page](#)

Overview

Quantity:	100 µg
Target:	NR1H2
Binding Specificity:	N-Term
Reactivity:	Human
Host:	Goat
Clonality:	Polyclonal
Conjugate:	This NR1H2 antibody is un-conjugated
Application:	ELISA, Immunofluorescence (IF), Flow Cytometry (FACS)

Product Details

Purpose:	LXR beta / NR1H2
Immunogen:	Peptide with sequence SSPTTSSLDTPLPGC, from the N Terminus of the protein sequence according to NP_009052.3.
Sequence:	SSPTTSSLDT PLPGC
Isotype:	IgG
Specificity:	Based on the peptide used, this antibody is expected to be specific for LXR beta and not to cross-react with LXR alpha.
Cross-Reactivity:	Dog, Human, Mouse, Rat
Purification:	Purified from goat serum by ammonium sulphate precipitation followed by antigen affinity chromatography using the immunizing peptide.

Product Details

Grade: Verified

Target Details

Target: NR1H2

Alternative Name: NR1H2 ([NR1H2 Products](#))

Background: NR1H2, LXR-b, NER, UNR, NER-I, RIP15, nuclear receptor subfamily 1, group H, member 2, ubiquitously-expressed nuclear receptor, LXRB, LX receptor beta, liver X receptor beta, liver X receptor-beta, nuclear orphan receptor LXR-beta, oxysterols receptor LXR

Gene ID: 7376

NCBI Accession: [NP_009052](#)

Pathways: [Nuclear Receptor Transcription Pathway](#), [Retinoic Acid Receptor Signaling Pathway](#), [Steroid Hormone Mediated Signaling Pathway](#), [Nuclear Hormone Receptor Binding](#)

Application Details

Application Notes: Peptide ELISA: antibody detection limit dilution 1:128000.

Comment: **Immunofluorescence:** Strong expression of the protein seen in the nuclei of U2OS cells.
Recommended concentration: 10µg/ml.
Flow Cytometry: Flow cytometric analysis of HeLa cells. Recommended concentration: 10ug/ml.

Restrictions: For Research Use only

Handling

Format: Liquid

Concentration: 0.5 mg/mL

Buffer: Supplied at 0.5 mg/mL in Tris saline, 0.02 % sodium azide, pH 7.3 with 0.5 % bovine serum albumin.

Preservative: Sodium azide

Precaution of Use: This product contains Sodium azide: a POISONOUS AND HAZARDOUS SUBSTANCE which should be handled by trained staff only.

Handling Advice: Minimize freezing and thawing.

Handling

Storage: -20 °C

Storage Comment: Aliquot and store at -20°C, with minimal freeze/thawing. A working aliquot may be refrigerated at 4°C for a few weeks and still remain viable.

Images

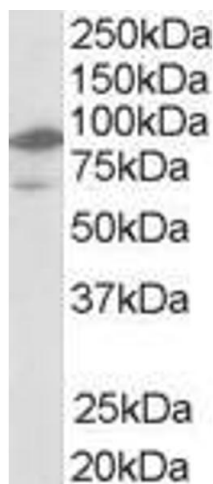
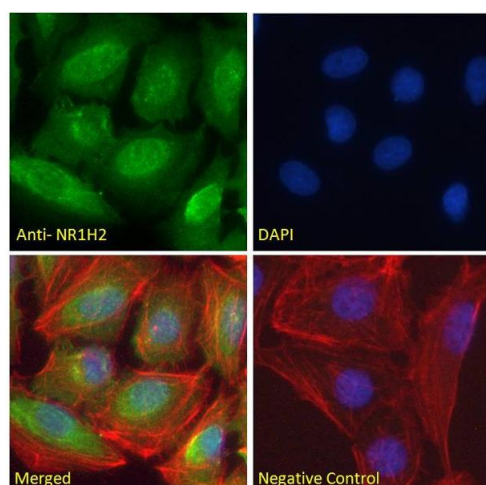
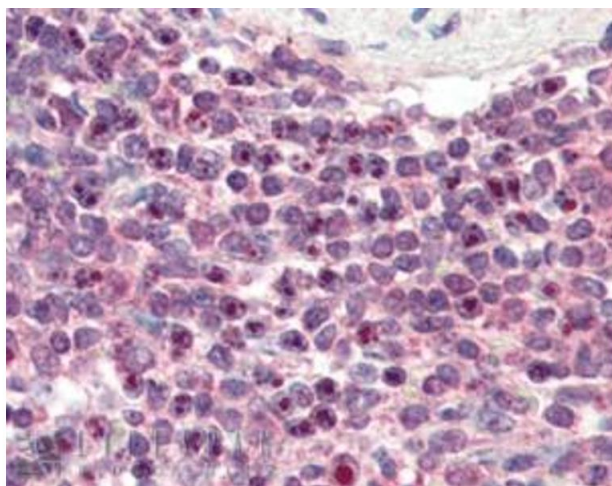


Image 1. ABIN185293 (1µg/ml) staining of human bone marrow lysate (35µg protein in RIPA buffer). Primary incubation was 1 hour. Detected by chemiluminescence.



Western Blotting

Image 2. ABIN185293 Immunofluorescence analysis of paraformaldehyde fixed U2OS cells, permeabilized with 0.15% Triton. Primary incubation 1hr (10ug/ml) followed by Alexa Fluor 488 secondary antibody (2ug/ml), showing nuclear staining. Actin filaments were stained with



Immunohistochemistry

Image 3. ABIN185293 (3µg/ml) staining of paraffin embedded Human Spleen. Steamed antigen retrieval with citrate buffer pH 6, AP-staining. This data is from a previous batch, not on sale.

Please check the [product details page](#) for more images. Overall 4 images are available for ABIN185293.