

Datasheet for ABIN185307
anti-LRP6 antibody (AA 1546-1560)

3 Images

[Go to Product page](#)

Overview

Quantity:	100 µg
Target:	LRP6
Binding Specificity:	AA 1546-1560
Reactivity:	Human
Host:	Goat
Clonality:	Polyclonal
Conjugate:	This LRP6 antibody is un-conjugated
Application:	Immunohistochemistry (IHC), ELISA, Flow Cytometry (FACS)

Product Details

Purpose:	LRP6
Immunogen:	Peptide with sequence CMTSVATAKGYTSDL, from the internal region of the protein sequence according to NP_002327.2.
Sequence:	CMTSVATAKG YTSDL
Isotype:	IgG
Specificity:	This antibody is expected to recognise an epitope corresponding to aa 1546-1560 of human LRP6 protein.
Cross-Reactivity:	Dog, Human, Mouse, Rat
Purification:	Purified from goat serum by ammonium sulphate precipitation followed by antigen affinity chromatography using the immunizing peptide.

Product Details

Grade: Verified

Target Details

Target:	LRP6
Alternative Name:	LRP6 (LRP6 Products)
Background:	LRP6, low density lipoprotein receptor-related protein 6, low density lipoprotein-related protein 6, ADCAD2, FLJ90062, FLJ90421
Gene ID:	4040, 16974
NCBI Accession:	NP_002327
Pathways:	WNT Signaling , Tube Formation

Application Details

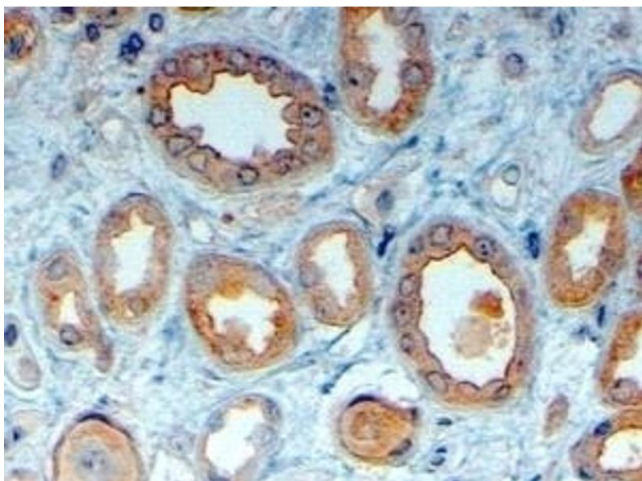
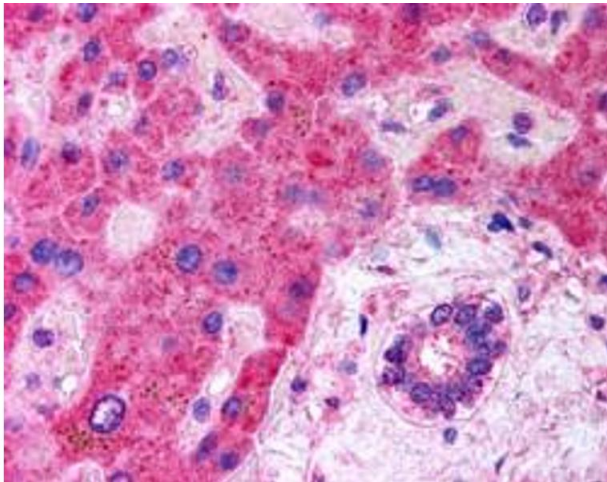
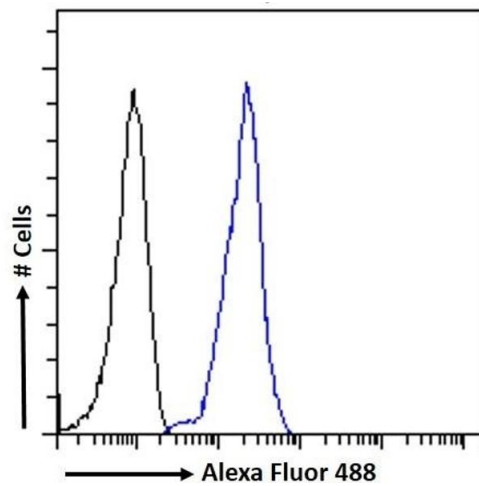
Application Notes:	Immunohistochemistry: In paraffin embedded Human Kidney shows luminal membrane staining in DCT. Recommended concentration: 4-6 µg/mL. Peptide ELISA: antibody detection limit dilution 1:64000.
Comment:	Flow Cytometry: Flow cytometric analysis of K562 cells. Recommended concentration: 10ug/ml.
Restrictions:	For Research Use only

Handling

Format:	Liquid
Concentration:	0.5 mg/mL
Buffer:	Supplied at 0.5 mg/mL in Tris saline, 0.02 % sodium azide, pH 7.3 with 0.5 % bovine serum albumin.
Preservative:	Sodium azide
Precaution of Use:	This product contains Sodium azide: a POISONOUS AND HAZARDOUS SUBSTANCE which should be handled by trained staff only.
Handling Advice:	Minimize freezing and thawing.
Storage:	-20 °C
Storage Comment:	Aliquot and store at -20°C, with minimal freeze/thawing. A working aliquot may be refrigerated

at 4°C for a few weeks and still remain viable.

Images



Flow Cytometry

Image 1. (ABIN185307) Flow cytometric analysis of paraformaldehyde fixed K562 cells (blue line), permeabilized with 0.5 % Triton. Primary incubation 1hr (10 µg/mL) followed by Alexa Fluor 488 secondary antibody (1 µg/mL). IgG control: Unimmunized goat IgG (black line) fo

Immunohistochemistry

Image 2. ABIN185307 (5µg/ml) staining of paraffin embedded human liver. Steamed antigen retrieval with citrate buffer pH 6, AP-staining.

Immunohistochemistry

Image 3. (ABIN185307) (4 µg/mL) staining of paraffin embedded Human Kidney. Steamed antigen retrieval with citrate buffer pH 6, HRP-staining.