



Datasheet for ABIN185311
anti-EFHD2 antibody (C-Term)



[Go to Product page](#)

4 Images

1 Publication

Overview

Quantity:	100 µg
Target:	EFHD2
Binding Specificity:	C-Term
Reactivity:	Human
Host:	Goat
Clonality:	Polyclonal
Conjugate:	This EFHD2 antibody is un-conjugated
Application:	ELISA, Western Blotting (WB)

Product Details

Purpose:	Swiprosin 1 / EFHD2
Immunogen:	CAAFKELQSTFK
Sequence:	CAAFKELQST FK
Isotype:	IgG
Specificity:	This antibody does not cross-react with Mouse Swiprosin 2. Data kindly provided by Sebastian Duetting and Dirk Mielenz.
Cross-Reactivity:	Cow, Dog, Human, Mouse, Rat
Purification:	Purified from goat serum by ammonium sulphate precipitation followed by antigen affinity chromatography using the immunizing peptide.
Grade:	Verified

Target Details

Target:	EFHD2
Alternative Name:	EFHD2 (EFHD2 Products)
Background:	EFHD2, MGC4342, EF hand domain containing 2, EF-hand domain family, member D2, RP3-467K16.3, SWS1, EF hand domain family, member D2, swiprosin 1
Gene ID:	79180, 27984
NCBI Accession:	NP_077305

Application Details

Application Notes:	Western Blot: Approx 30 kDa band observed in Human Thymus, Human Lymph node and Human Tonsil lysates (calculated MW of 26.7 kDa according to NP_077305.2). Recommended concentration: 0.5-1.5 µg/mL. Primary incubation was 1 hour. Peptide ELISA: antibody detection limit dilution 1:128000.
Restrictions:	For Research Use only

Handling

Format:	Liquid
Concentration:	0.5 mg/mL
Buffer:	Supplied at 0.5 mg/mL in Tris saline, 0.02 % sodium azide, pH 7.3 with 0.5 % bovine serum albumin.
Preservative:	Sodium azide
Precaution of Use:	This product contains Sodium azide: a POISONOUS AND HAZARDOUS SUBSTANCE which should be handled by trained staff only.
Handling Advice:	Minimize freezing and thawing.
Storage:	-20 °C
Storage Comment:	Aliquot and store at -20°C, with minimal freeze/thawing. A working aliquot may be refrigerated at 4°C for a few weeks and still remain viable.

Publications

Product cited in:	Brachs, Lang, Buslei, Purohit, Fürnrohr, Kalbacher, Jäck, Mielenz: "Monoclonal antibodies to discriminate the EF hand containing calcium binding adaptor proteins EFhd1 and EFhd2." in:
-------------------	---

Monoclonal antibodies in immunodiagnosis and immunotherapy, Vol. 32, Issue 4, pp. 237-45, (2013) ([PubMed](#)).

Images

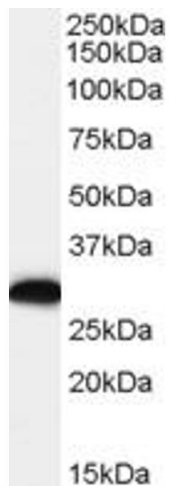
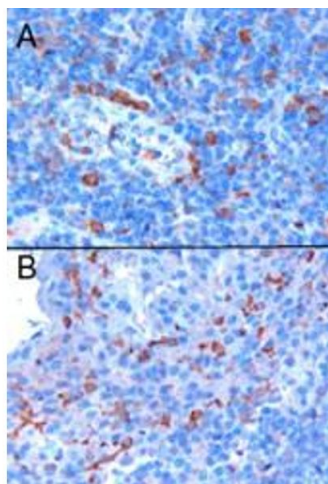
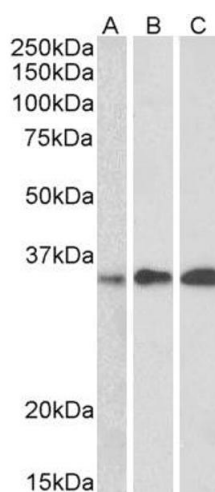


Image 1. ABIN185311 (0.1µg/ml) staining of human lymph node lysate. Primary incubation was 1 hour. Detected by chemiluminescence.



Immunohistochemistry

Image 2. ABIN185311 (0.3µg/ml) staining of paraffin embedded human tonsil. Microwaved antigen retrieval with citrate buffer pH6, HRP-staining. Positive cells A) in the interfollicular area and surrounding a vessel, B) in proximity of the epithelial criptae.



Western Blotting

Image 3. ABIN185311 (0.5µg/ml) staining of Human Thymus, Human Lymph node and Human Tonsil lysate (35µg protein in RIPA buffer). Detected by chemiluminescence.

Please check the [product details page](#) for more images. Overall 4 images are available for ABIN185311.