



[Go to Product page](#)

Datasheet for ABIN185312  
**anti-TOM1L2 antibody (C-Term)**

2 Images

Overview

Quantity:	100 µg
Target:	TOM1L2
Binding Specificity:	C-Term
Reactivity:	Human
Host:	Goat
Clonality:	Polyclonal
Conjugate:	This TOM1L2 antibody is un-conjugated
Application:	Western Blotting (WB), ELISA, Immunohistochemistry (IHC)

Product Details

Purpose:	TOM1L2
Immunogen:	Peptide with sequence CRKKPERSEDALFAL, from the C Terminus of the protein sequence according to NP_001028723.1, NP_001076437.1.
Sequence:	CRKKPERSED ALFAL
Isotype:	IgG
Specificity:	This antibody is expected to recognise both reported isoforms.
Cross-Reactivity:	Dog, Human, Mouse
Purification:	Purified from goat serum by ammonium sulphate precipitation followed by antigen affinity chromatography using the immunizing peptide.
Grade:	Verified

## Target Details

---

Target:	TOM1L2
Alternative Name:	TOM1L2 ( <a href="#">TOM1L2 Products</a> )
Background:	TOM1L2, FLJ32746, target of myb1-like 2 (chicken), target of myb1 (chicken) homolog-like 1, target of myb1 (chicken) homolog-like 2, target of myb1-like 2
Gene ID:	146691
NCBI Accession:	<a href="#">NP_001028723</a> , <a href="#">NP_001076437</a>

## Application Details

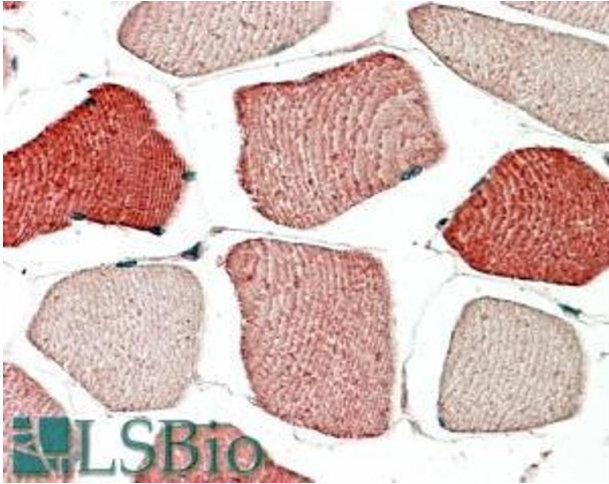
---

Application Notes:	<p>Immunohistochemistry: In paraffin embedded Human Skeletal Muscle shows variable staining from fibre to fibre. Recommended concentration, 5-10 µg/mL.</p> <p>Western Blot: Approx 60 kDa band observed in Human Fibroblast A431 lysates (calculated MW of 51.8 kDa according to NP_653279). Recommended concentration: 0.1-1 µg/mL.</p> <p>Peptide ELISA: antibody detection limit dilution 1:64000.</p>
Restrictions:	For Research Use only

## Handling

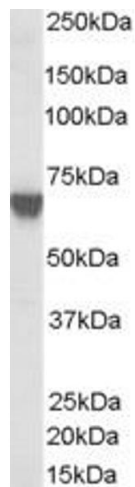
---

Format:	Liquid
Concentration:	0.5 mg/mL
Buffer:	Supplied at 0.5 mg/mL in Tris saline, 0.02 % sodium azide, pH 7.3 with 0.5 % bovine serum albumin.
Preservative:	Sodium azide
Precaution of Use:	This product contains Sodium azide: a POISONOUS AND HAZARDOUS SUBSTANCE which should be handled by trained staff only.
Handling Advice:	Minimize freezing and thawing.
Storage:	-20 °C
Storage Comment:	Aliquot and store at -20°C, with minimal freeze/thawing. A working aliquot may be refrigerated at 4°C for a few weeks and still remain viable.



### Immunohistochemistry

**Image 1.** ABIN185312 (5 $\mu$ g/ml) staining of paraffin embedded Human Skeletal Muscle. Steamed antigen retrieval with citrate buffer pH 6, AP-staining.



**Image 2.** ABIN185312 (0.03  $\mu$ g/ml) staining of A431 lysate (35  $\mu$ g protein in RIPA buffer). Primary incubation was 1 hour. Detected by chemiluminescence.