

Datasheet for ABIN185319
anti-PSMD2 antibody (C-Term)

5 Images

[Go to Product page](#)

Overview

Quantity:	100 µg
Target:	PSMD2
Binding Specificity:	C-Term
Reactivity:	Human, Mouse, Rat
Host:	Goat
Clonality:	Polyclonal
Conjugate:	This PSMD2 antibody is un-conjugated
Application:	Western Blotting (WB), ELISA, Immunofluorescence (IF), Flow Cytometry (FACS)

Product Details

Purpose:	TRAP2 / Proteasome subunit 26S
Immunogen:	Peptide with sequence C-VILRKNPNYDL, from the C Terminus of the protein sequence according to NP_002799.3.
Sequence:	VILRKNPNYD L
Isotype:	IgG
Cross-Reactivity:	Cow, Dog, Human, Mouse, Rat
Purification:	Purified from goat serum by ammonium sulphate precipitation followed by antigen affinity chromatography using the immunizing peptide.
Grade:	Verified

Target Details

Target:	PSMD2
Alternative Name:	PSMD2 (PSMD2 Products)
Background:	PSMD2, TRAP2, MGC14274, S2, P97, proteasome (prosome, macropain) 26S subunit, non-ATPase, 2, 55.11 protein, TNFR-associated protein 2, 26S proteasome subunit p97, 26S proteasome regulatory subunit S2, 26S proteasome non-ATPase regulatory subunit 2, tumor
Gene ID:	5708
NCBI Accession:	NP_002799 , NP_001265637 , NP_001265638
Pathways:	Mitotic G1-G1/S Phases , DNA Replication , Synthesis of DNA , Ubiquitin Proteasome Pathway

Application Details

Application Notes:	Western Blot: Approx 100 kDa band observed in lysates of cell lines HeLa, U251, NIH3T3 and KNRK (calculated MW of 100 kDa according to Human NP_002799.3, Mouse NP_598862.1 and Rat NP_001026809.1). Recommended concentration: 0.3-1 µg/mL. Primary incubation 1 Peptide ELISA: antibody detection limit dilution 1:64000.
Comment:	Immunofluorescence: Strong expression of the protein seen in the cytoplasm of HeLa cells. Recommended concentration: 10µg/ml. Flow Cytometry: Flow cytometric analysis of HeLa cells. Recommended concentration: 10ug/ml.<
Restrictions:	For Research Use only

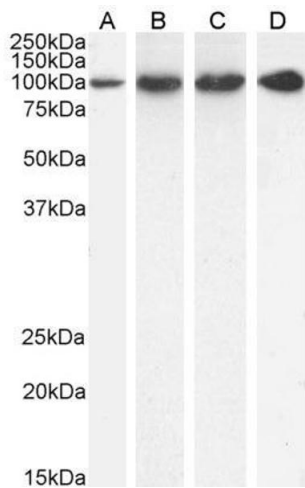
Handling

Format:	Liquid
Concentration:	0.5 mg/mL
Buffer:	Supplied at 0.5 mg/mL in Tris saline, 0.02 % sodium azide, pH 7.3 with 0.5 % bovine serum albumin.
Preservative:	Sodium azide
Precaution of Use:	This product contains Sodium azide: a POISONOUS AND HAZARDOUS SUBSTANCE which should be handled by trained staff only.
Handling Advice:	Minimize freezing and thawing.
Storage:	-20 °C

Handling

Storage Comment: Aliquot and store at -20°C, with minimal freeze/thawing. A working aliquot may be refrigerated at 4°C for a few weeks and still remain viable.

Images



Western Blotting

Image 1. ABIN185319 (1 µg/ml) staining of HeLa (A), U251 (B), KNRK (C) and (0.3ug/ml) NIH3T3 (D) cell lysate (35µg protein in RIPA buffer). Detected by chemiluminescence.

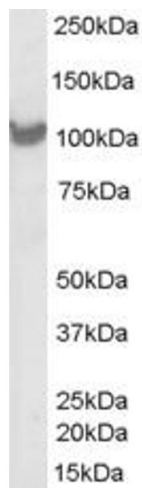


Image 2. ABIN185319 (0.03 ug/ml) staining of A431 lysate (35 ug protein in RIPA buffer). Primary incubation was 1 hour. Detected by chemiluminescence.



Western Blotting

Image 3. ABIN185319 (0.03 µg/ml) staining of A431 lysate (35µg protein in RIPA buffer). Detected by chemiluminescence.

Please check the [product details page](#) for more images. Overall 5 images are available for ABIN185319.