

Datasheet for ABIN1853200
anti-OR1S1/1S2 antibody (C-Term)

2 Images

[Go to Product page](#)

Overview

Quantity:	100 µL
Target:	OR1S1/1S2 (OR1S1/OR1S2)
Binding Specificity:	C-Term
Reactivity:	Human
Host:	Rabbit
Clonality:	Polyclonal
Application:	ELISA, Western Blotting (WB)

Product Details

Immunogen:	The antiserum was produced against synthesized peptide derived from C-terminal of human OR1S2.
Specificity:	Rabbit polyclonal antibody against OR1S1/1S2 protein.
Purification:	The antibody was affinity-purified from rabbit antiserum by affinity-chromatography using epitope-specific immunogen

Target Details

Target:	OR1S1/1S2 (OR1S1/OR1S2)
Alternative Name:	OR1S1/1S2 (OR1S1/OR1S2 Products)
UniProt:	Q8NGQ3 , Q8NH92

Application Details

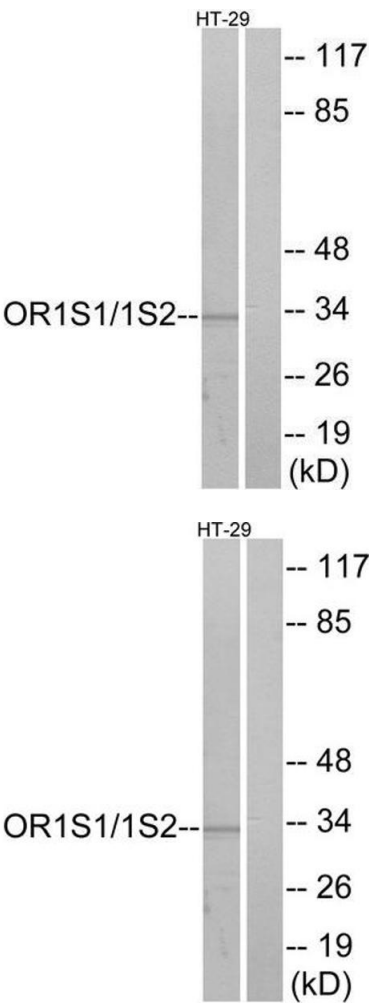
Restrictions: For Research Use only

Handling

Storage: -20 °C

Storage Comment: Aliquot and store at -20 °C. Avoid repeated freeze/thaw cycles.

Images



Western Blotting

Image 1.

Western Blotting

Image 2. Western blot analysis of extracts from HT-29 cells, using OR1S1/1S2 antibody.