

Datasheet for ABIN185321
anti-MBL2 antibody (C-Term)

2 Images

[Go to Product page](#)

Overview

Quantity:	100 µg
Target:	MBL2
Binding Specificity:	C-Term
Reactivity:	Human
Host:	Goat
Clonality:	Polyclonal
Conjugate:	This MBL2 antibody is un-conjugated
Application:	Western Blotting (WB), ELISA

Product Details

Purpose:	MBL2 / Mannan-Binding Lectin
Immunogen:	Peptide with sequence STSHLAVCEFPI, from the C Terminus of the protein sequence according to NP_000233.1.
Sequence:	STSHLAVCEF PI
Isotype:	IgG
Cross-Reactivity:	Human
Purification:	Purified from goat serum by ammonium sulphate precipitation followed by antigen affinity chromatography using the immunizing peptide.
Grade:	Verified

Target Details

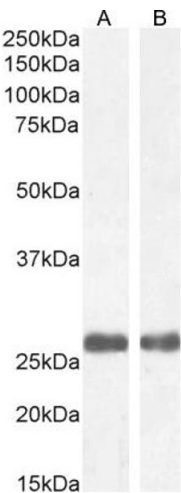
Target:	MBL2
Alternative Name:	MBL2 (MBL2 Products)
Background:	MBL2, mannan-binding lectin, MBL, MBP, MBP1, COLEC1, HSMBPC, mannose-binding lectin (protein C) 2, soluble (opsonic defect), mannan-binding protein, mannose binding protein, Mannose-binding lectin 2, soluble (opsonic defect), MGC116832, MGC116833, mannose
Gene ID:	4153
NCBI Accession:	NP_000233
Pathways:	Complement System , Positive Regulation of Immune Effector Process

Application Details

Application Notes:	Western Blot: Approx 26 kDa band observed in Human Heart and Liver lysates (calculated MW of 26.1 kDa according to NP_000233). Recommended concentration: 1-3 µg/mL. Primary incubation 1 hour at room temperature. Peptide ELISA: antibody detection limit dilution 1:2000.
Restrictions:	For Research Use only

Handling

Format:	Liquid
Concentration:	0.5 mg/mL
Buffer:	Supplied at 0.5 mg/mL in Tris saline, 0.02 % sodium azide, pH 7.3 with 0.5 % bovine serum albumin.
Preservative:	Sodium azide
Precaution of Use:	This product contains Sodium azide: a POISONOUS AND HAZARDOUS SUBSTANCE which should be handled by trained staff only.
Handling Advice:	Minimize freezing and thawing.
Storage:	-20 °C
Storage Comment:	Aliquot and store at -20°C, with minimal freeze/thawing. A working aliquot may be refrigerated at 4°C for a few weeks and still remain viable.



Western Blotting

Image 1. (ABIN185321) (1 µg/mL) staining of Human Heart (A) and Liver (B) lysate (35 µg protein in RIPA buffer). Detected by chemiluminescence.

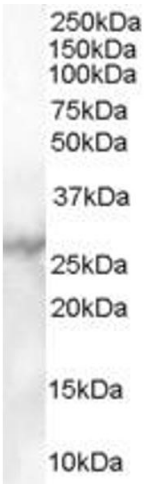


Image 2. ABIN185321 (1µg/ml) staining of Human Heart lysate (35µg protein in RIPA buffer). Primary incubation was 1 hour. Detected by chemiluminescence.