

Datasheet for ABIN185322

anti-SYNGR2 antibody (Internal Region)**2** Images[Go to Product page](#)

Overview

| | |
|----------------------|---------------------------------------|
| Quantity: | 100 µg |
| Target: | SYNGR2 |
| Binding Specificity: | Internal Region |
| Reactivity: | Human |
| Host: | Goat |
| Clonality: | Polyclonal |
| Conjugate: | This SYNGR2 antibody is un-conjugated |
| Application: | Western Blotting (WB), ELISA |

Product Details

| | |
|-------------------|---|
| Purpose: | Synaptogyrin 2 / Cellugyrin |
| Immunogen: | Peptide with sequence CIYGEGYSNAHESKQ, from the internal region of the protein sequence according to NP_004701.1. |
| Sequence: | CIYGEGYSNA HESKQ |
| Isotype: | IgG |
| Specificity: | This antibody is expected to recognize both reported antibodies (NP_004701.1, NP_001307452.1). |
| Cross-Reactivity: | Human, Mouse |
| Purification: | Purified from goat serum by ammonium sulphate precipitation followed by antigen affinity chromatography using the immunizing peptide. |

Product Details

Grade: Verified

Target Details

Target: SYNGR2

Alternative Name: SYNGR2 ([SYNGR2 Products](#))

Background: SYNGR2, cellugyrin,synaptogyrin 2, MGC102914

Gene ID: 9144

NCBI Accession: [NP_004701](#), [NP_001307452](#)

Application Details

Application Notes: Western Blot: Approx 25-26 kDa band observed in Human Muscle lysates (calculated MW of 24.8 kDa according to NP_004701.1). Recommended concentration: 0.3-1 µg/mL. Primary incubation was 1 hour.
Peptide ELISA: antibody detection limit dilution 1:8000.

Restrictions: For Research Use only

Handling

Format: Liquid

Concentration: 0.5 mg/mL

Buffer: Supplied at 0.5 mg/mL in Tris saline, 0.02 % sodium azide, pH 7.3 with 0.5 % bovine serum albumin.

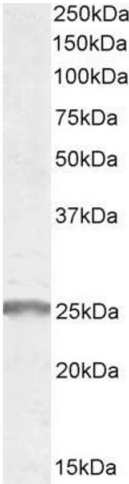
Preservative: Sodium azide

Precaution of Use: This product contains Sodium azide: a POISONOUS AND HAZARDOUS SUBSTANCE which should be handled by trained staff only.

Handling Advice: Minimize freezing and thawing.

Storage: -20 °C

Storage Comment: Aliquot and store at -20°C, with minimal freeze/thawing. A working aliquot may be refrigerated at 4°C for a few weeks and still remain viable.



Western Blotting

Image 1. ABIN185322 (1µg/ml) staining of Human Muscle lysate (35µg protein in RIPA buffer). Detected by chemiluminescence.



Image 2. ABIN185322 (0.3µg/ml) staining of Human Muscle lysate (35µg protein in RIPA buffer). Primary incubation was 1 hour. Detected by chemiluminescence.