

Datasheet for ABIN185328  
**anti-COMT antibody (N-Term)**

## 5 Images

[Go to Product page](#)

## Overview

Quantity:	100 µg
Target:	COMT
Binding Specificity:	N-Term
Reactivity:	Human
Host:	Goat
Clonality:	Polyclonal
Conjugate:	This COMT antibody is un-conjugated
Application:	Western Blotting (WB), ELISA, Flow Cytometry (FACS)

## Product Details

Purpose:	COMT (N Terminus)
Immunogen:	Peptide with sequence GDTKEQRILNHVLQC, from the N Terminus of the protein sequence according to NP_000745.1, NP_001128633.1, NP_001128634.1, NP_009294.1.
Sequence:	GDTKEQRILN HVLQC
Isotype:	IgG
Specificity:	This antibody is expected to recognise both reported isoforms S-COMT NP_009294.1 and MB-COMT NP_000745.1, NP_001128633.1, NP_001128634..
Cross-Reactivity:	Dog, Human
Purification:	Purified from goat serum by ammonium sulphate precipitation followed by antigen affinity chromatography using the immunizing peptide.

## Product Details

Grade: Verified

## Target Details

Target: COMT

Alternative Name: COMT ([COMT Products](#))

Background: COMT, catechol-O-methyltransferase, OTTHUMP00000197749, OTTHUMP00000197750

Gene ID: 1312

NCBI Accession: [NP\\_000745](#), [NP\\_001128633](#), [NP\\_001128634](#), [NP\\_009294](#)

Pathways: [Steroid Hormone Biosynthesis](#), [SARS-CoV-2 Protein Interactome](#)

## Application Details

Application Notes: Western Blot: Approx 25 kDa band observed in Human Liver and Ovary lysates and in MCF7 cell lysates, and approx. 25 kDa and 30 kDa in U251 cell lysate (calculated MW of 30.0 kDa according to NP\_000745.1 (MB COMT) and 24.5 kDa according to NP\_009294.1 (S-COMT)  
Peptide ELISA: antibody detection limit dilution 1:4000.

Comment: **Flow Cytometry:** Flow cytometric analysis of A431 cells. Recommended concentration: 10ug/ml.

Restrictions: For Research Use only

## Handling

Format: Liquid

Concentration: 0.5 mg/mL

Buffer: Supplied at 0.5 mg/mL in Tris saline, 0.02 % sodium azide, pH 7.3 with 0.5 % bovine serum albumin.

Preservative: Sodium azide

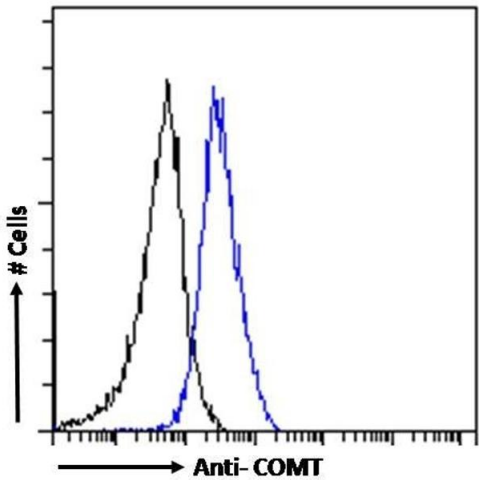
Precaution of Use: This product contains Sodium azide: a POISONOUS AND HAZARDOUS SUBSTANCE which should be handled by trained staff only.

Handling Advice: Minimize freezing and thawing.

Storage: -20 °C

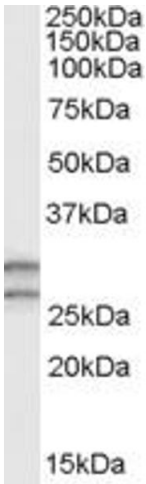
Storage Comment: Aliquot and store at -20°C, with minimal freeze/thawing. A working aliquot may be refrigerated

at 4°C for a few weeks and still remain viable.



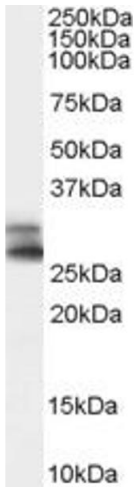
Flow Cytometry

**Image 1.** (ABIN185328) Flow cytometric analysis of paraformaldehyde fixed A431 cells (blue line), permeabilized with 0.5 % Triton. Primary incubation 1hr (10 µg/mL) followed by Alexa Fluor 488 secondary antibody (1 µg/mL). IgG control: Unimmunized goat IgG (black line) fol



Western Blotting

**Image 2.** Staining of human testis lysate (35µg protein in RIPA buffer) with ABIN185328 (0.3µg/ml). Primary incubation was 1 hour. Detected by chemiluminescence.



**Image 3.** Staining of human testis lysate (35µg protein in RIPA buffer) with ABIN185328 (0.2µg/ml). Primary incubation was 1 hour. Detected by chemiluminescence.

Please check the [product details page](#) for more images. Overall 5 images are available for ABIN185328.