

Datasheet for ABIN185343

anti-Cytochrome B Reductase 1 antibody (C-Term)[Go to Product page](#)**1** Image**3** Publications

Overview

Quantity:	100 µg
Target:	Cytochrome B Reductase 1 (CYBRD1)
Binding Specificity:	C-Term
Reactivity:	Human
Host:	Goat
Clonality:	Polyclonal
Conjugate:	This Cytochrome B Reductase 1 antibody is un-conjugated
Application:	ELISA, Western Blotting (WB), Immunohistochemistry (IHC)

Product Details

Purpose:	Cytochrome b reductase 1
Immunogen:	Peptide with sequence CRNLALDEAGQRSTM, from the C Terminus of the protein sequence according to NP_079119.3.
Sequence:	CRNLALDEAG QRSTM
Isotype:	IgG
Specificity:	This antibody is expected to recognise isoform 1 (NP_079119.3) only.
Cross-Reactivity:	Cow, Dog, Human, Pig
Purification:	Purified from goat serum by ammonium sulphate precipitation followed by antigen affinity chromatography using the immunizing peptide.
Grade:	Verified

Target Details

Target:	Cytochrome B Reductase 1 (CYBRD1)
Alternative Name:	CYBRD1 (CYBRD1 Products)
Background:	CYBRD1, DCYTB, FLJ23462, cytochrome b reductase 1, duodenal cytochrome b, FRRS3, ferric-chelate reductase 3
Gene ID:	79901
NCBI Accession:	NP_079119
Pathways:	Transition Metal Ion Homeostasis

Application Details

Application Notes:	Immunohistochemistry: In paraffin embedded Human Testis shows membranous staining in primarily myofibroblasts of the basement membrane surrounding the seminiferous tubules. Recommended concentration: 2-5 µg/mL. Paraffin embedded Human Small Intestine. Rec Western Blot: Preliminary experiments gave bands at approx 35 kDa and a 26+28 kDa doublet in human colon lysate after 0.1 µg/mL antibody staining. The detected bands were all successfully blocked by with the immunizing peptide. This antibody was successfull Peptide ELISA: antibody detection limit dilution 1:16000.
Restrictions:	For Research Use only

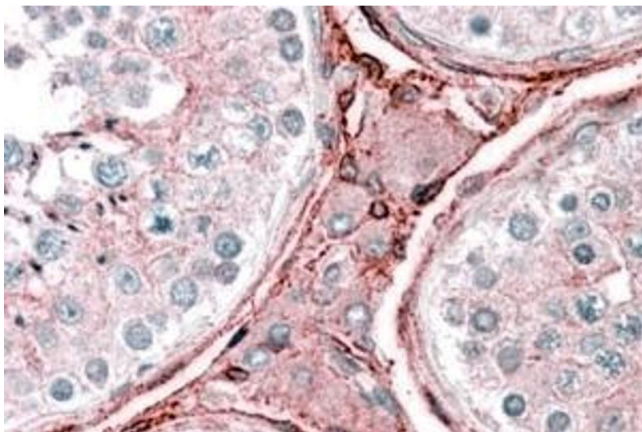
Handling

Format:	Liquid
Concentration:	0.5 mg/mL
Buffer:	Supplied at 0.5 mg/mL in Tris saline, 0.02 % sodium azide, pH 7.3 with 0.5 % bovine serum albumin.
Preservative:	Sodium azide
Precaution of Use:	This product contains Sodium azide: a POISONOUS AND HAZARDOUS SUBSTANCE which should be handled by trained staff only.
Handling Advice:	Minimize freezing and thawing.
Storage:	-20 °C
Storage Comment:	Aliquot and store at -20°C, with minimal freeze/thawing. A working aliquot may be refrigerated at 4°C for a few weeks and still remain viable.

Publications

- Product cited in: Dostalíkova-Cimburová, Balusíková, Kratka, Chmelíková, Hejda, Hnaníček, Neubauerová, Vranová, Kovár, Horák: "Role of duodenal iron transporters and hepcidin in patients with alcoholic liver disease." in: **Journal of cellular and molecular medicine**, Vol. 18, Issue 9, pp. 1840-50, (2014) ([PubMed](#)).
- Dostalíkova-Cimburová, Kratka, Balusíková, Chmelíková, Hejda, Hnaníček, Neubauerová, Vranová, Kovár, Horák: "Duodenal expression of iron transport molecules in patients with hereditary hemochromatosis or iron deficiency." in: **Journal of cellular and molecular medicine**, Vol. 16, Issue 8, pp. 1816-26, (2012) ([PubMed](#)).
- Balusíková, Neubauerová, Dostalíkova-Cimburová, Horák, Kovár: "Differing expression of genes involved in non-transferrin iron transport across plasma membrane in various cell types under iron deficiency and excess." in: **Molecular and cellular biochemistry**, Vol. 321, Issue 1-2, pp. 123-33, (2009) ([PubMed](#)).

Images



Immunohistochemistry

Image 1. ABIN185343 (2.5µg/ml) staining of paraffin embedded Human Testis. Steamed antigen retrieval with citrate buffer pH 6, AP-staining.