

Datasheet for ABIN185349
anti-TPI1 antibody (C-Term)[Go to Product page](#)

2 Images

2 Publications

Overview

Quantity:	100 µg
Target:	TPI1
Binding Specificity:	C-Term
Reactivity:	Human, Mouse, Rat, Dog
Host:	Goat
Clonality:	Polyclonal
Conjugate:	This TPI1 antibody is un-conjugated
Application:	Western Blotting (WB), ELISA, Immunohistochemistry (IHC), Flow Cytometry (FACS)

Product Details

Purpose:	Triosephosphate isomerase
Immunogen:	Peptide with sequence C-LKPEFVDIINAKQ, from the C Terminus of the protein sequence according to NP_000356.1, NP_001152759.1.
Sequence:	LKPEFVDIIN AKQ
Isotype:	IgG
Specificity:	This antibody is expected to recognise reported isoforms 1, 2 and 3 (NP_000356.1, NP_001152759.1, NP_001244955.1.
Cross-Reactivity:	Cow, Dog, Human, Mouse, Rat
Purification:	Purified from goat serum by ammonium sulphate precipitation followed by antigen affinity chromatography using the immunizing peptide.

Product Details

Grade: Verified

Target Details

Target: TPI1

Alternative Name: TPI1 ([TPI1 Products](#))

Background: TPI1, triosephosphate isomerase 1, TPI, MGC88108

Gene ID: 7167, 21991, 24849

NCBI Accession: [NP_000356](#), [NP_001152759](#)

Pathways: [Cell RedoxHomeostasis](#)

Application Details

Application Notes: Immunohistochemistry: In paraffin embedded Human Liver shows staining of the sinusoids.
Recommended concentration: 2-4 µg/mL. Paraffin embedded Human Pancreas.
Recommended concentration: 5 µg/mL.
Western Blot: Approx 26 kDa band observed in lysates of cell lines HEK293, HeLa, HepG2, Jurkat, Raw264.7. KNRK and MDCK (calculated MW of 26.7 kDa according to Human NP_000356.1). Recommended concentration: 0.001-0.01 µg/mL. Primary incubation 1 hour at room temperature.
Peptide ELISA: antibody detection limit dilution 1:16000.

Comment: **Flow Cytometry:** Flow cytometric analysis of HepG2 cells. Recommended concentration: 10µg/ml.

Restrictions: For Research Use only

Handling

Format: Liquid

Concentration: 0.5 mg/mL

Buffer: Supplied at 0.5 mg/mL in Tris saline, 0.02 % sodium azide, pH 7.3 with 0.5 % bovine serum albumin.

Preservative: Sodium azide

Precaution of Use: This product contains Sodium azide: a POISONOUS AND HAZARDOUS SUBSTANCE which should be handled by trained staff only.

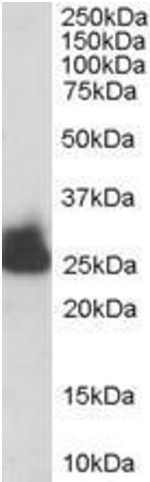
Handling

Handling Advice:	Minimize freezing and thawing.
Storage:	-20 °C
Storage Comment:	Aliquot and store at -20°C, with minimal freeze/thawing. A working aliquot may be refrigerated at 4°C for a few weeks and still remain viable.

Publications

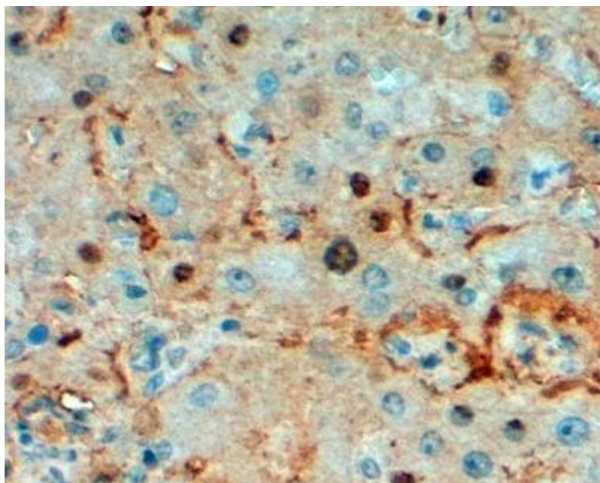
Product cited in:	Honoré, Buus, Claësson: "Identification of differentially expressed proteins in spontaneous thymic lymphomas from knockout mice with deletion of p53." in: Proteome science , Vol. 6, pp. 18, (2008) (PubMed).
	Vorum, Østergaard, Rice, Honoré, Bek: "Identification of differentially regulated proteins in a patient with Leber's Congenital Amaurosis--a proteomic study." in: Proteome science , Vol. 5, pp. 5, (2007) (PubMed).

Images



Western Blotting

Image 1. ABIN185349 staining (0.003µg/ml) of Human Liver lysate (RIPA buffer, 30µg total protein per lane). Detected by chemiluminescence.



Immunohistochemistry

Image 2. ABIN185349 (2µg/ml) staining of paraffin embedded Human Liver. Steamed antigen retrieval with Tris/EDTA buffer pH 9, HRP-staining.