

Datasheet for ABIN185353

anti-Integrin beta 5 antibody (C-Term)[Go to Product page](#)**1** Image

Overview

Quantity:	100 µg
Target:	Integrin beta 5 (ITGB5)
Binding Specificity:	C-Term
Reactivity:	Human, Mouse
Host:	Goat
Clonality:	Polyclonal
Conjugate:	This Integrin beta 5 antibody is un-conjugated
Application:	Western Blotting (WB), ELISA

Product Details

Purpose:	Integrin beta 5
Immunogen:	Peptide with sequence C-TFNKFNKSYNGTVD, from the C Terminus of the protein sequence according to NP_002204.2.
Sequence:	TFNKFNKSYN GTVD
Isotype:	IgG
Cross-Reactivity:	Cow, Dog, Human, Mouse, Pig, Rat
Purification:	Purified from goat serum by ammonium sulphate precipitation followed by antigen affinity chromatography using the immunizing peptide.
Grade:	Verified

Target Details

Target:	Integrin beta 5 (ITGB5)
Alternative Name:	ITGB5 (ITGB5 Products)
Background:	ITGB5, integrin, beta 5, FLJ26658
Gene ID:	3693, 16419
NCBI Accession:	NP_002204
Pathways:	Integrin Complex

Application Details

Application Notes:	Western Blot: Approx 110 kDa band observed in Human Ovary and Mouse Eye lysates (calculated MW of 88.1 kDa according to NP_002204.2). Recommended concentration: 0.1-0.3 µg/mL. Customer feedback: observed 110 kDa in Mouse Eye was confirmed and not present Peptide ELISA: antibody detection limit dilution 1:16000.
Restrictions:	For Research Use only

Handling

Format:	Liquid
Concentration:	0.5 mg/mL
Buffer:	Supplied at 0.5 mg/mL in Tris saline, 0.02 % sodium azide, pH 7.3 with 0.5 % bovine serum albumin.
Preservative:	Sodium azide
Precaution of Use:	This product contains Sodium azide: a POISONOUS AND HAZARDOUS SUBSTANCE which should be handled by trained staff only.
Handling Advice:	Minimize freezing and thawing.
Storage:	-20 °C
Storage Comment:	Aliquot and store at -20°C, with minimal freeze/thawing. A working aliquot may be refrigerated at 4°C for a few weeks and still remain viable.

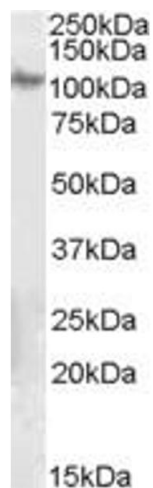


Image 1. ABIN185353 (0.1µg/ml) staining of Human Ovary lysate (35µg protein in RIPA buffer). Primary incubation was 1 hour. Detected by chemiluminescence.