

Datasheet for ABIN1853534

anti-F12 antibody (Cleaved-Ile20, Heavy Chain, N-Term)[Go to Product page](#)**2** Images

Overview

Quantity:	100 µL
Target:	F12
Binding Specificity:	Cleaved-Ile20, Heavy Chain, N-Term
Reactivity:	Human
Host:	Rabbit
Clonality:	Polyclonal
Conjugate:	This F12 antibody is un-conjugated
Application:	Western Blotting (WB), ELISA, Immunohistochemistry (IHC)

Product Details

Immunogen:	The antiserum was produced against synthesized peptide derived from N-terminal of human FA12 heavy chain.
Specificity:	Rabbit polyclonal antibody against FA12 protein. Specificity is as follows for the reactive species: H:I20
Purification:	The antibody was affinity-purified from rabbit antiserum by affinity-chromatography using epitope-specific immunogen

Target Details

Target:	F12
Abstract:	F12 Products
UniProt:	P00748

Target Details

Pathways: [Complement System](#)

Application Details

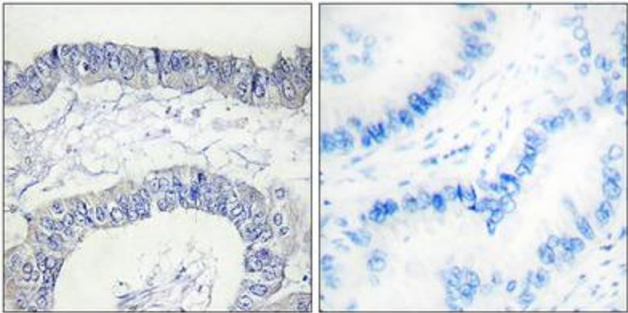
Restrictions: For Research Use only

Handling

Storage: -20 °C

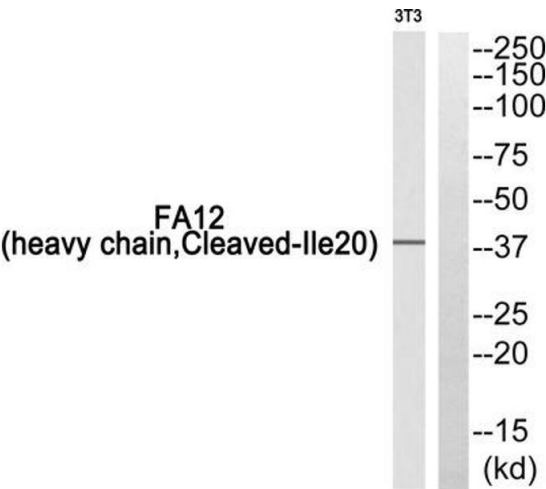
Storage Comment: Aliquot and store at -20 °C. Avoid repeated freeze/thaw cycles.

Images



Immunohistochemistry

Image 1. Immunohistochemistry analysis of paraffin-embedded human lung carcinoma tissue, using FA12 (heavy chain, Cleaved-Ile20) antibody.



Western Blotting

Image 2. Western blot analysis of extracts from 3T3 cells, using FA12 (heavy chain, Cleaved-Ile20) antibody.