

Datasheet for ABIN185357

anti-Acetylcholinesterase antibody (C-Term)

11 Images

[Go to Product page](#)

Overview

Quantity:	100 µg
Target:	Acetylcholinesterase (AChE)
Binding Specificity:	C-Term
Reactivity:	Human
Host:	Goat
Clonality:	Polyclonal
Conjugate:	This Acetylcholinesterase antibody is un-conjugated
Application:	Western Blotting (WB), ELISA, Immunofluorescence (IF), Flow Cytometry (FACS)

Product Details

Purpose:	ACHE
Immunogen:	Peptide with sequence QFDHYSKQDRCS DL, from the C Terminus of the protein sequence according to NP_000656.1.
Sequence:	QFDHYSKQDR CSDL
Isotype:	IgG
Specificity:	This antibody is expected to recognise isoform NP_000656.1 only (the ubiquitously expressed, hydrophilic form).
Cross-Reactivity:	Human, Mouse, Rat
Purification:	Purified from goat serum by ammonium sulphate precipitation followed by antigen affinity chromatography using the immunizing peptide.

Product Details

Grade: Verified

Target Details

Target:	Acetylcholinesterase (AChE)
Alternative Name:	ACHE (AChE Products)
Background:	ACHE, YT, acetylcholinesterase (YT blood group), ARACHE, N-ACHE, OTTHUMP00000211347, OTTHUMP00000211349, OTTHUMP00000211356, acetylcholinesterase, apoptosis-related acetylcholinesterase
Gene ID:	43
NCBI Accession:	NP_000656 , NP_001269378
Pathways:	Skeletal Muscle Fiber Development

Application Details

Application Notes:	Western Blot: Approx 70 kDa band observed in HepG2 and Jurkat cell lysates (calculated MW of 67.8 kDa according to NP_000656.1). Recommended concentration: 0.3-1 µg/mL. Primary incubation 1 hour at room temperature. Peptide ELISA: antibody detection limit dilution 1:32000.
Comment:	Immunofluorescence: Strong expression of the protein seen in the cytoplasm, plasma membrane and nucleus of U2OS cells. Recommended concentration: 10µg/ml. Flow Cytometry: Flow cytometric analysis of HeLa cells. Recomm
Restrictions:	For Research Use only

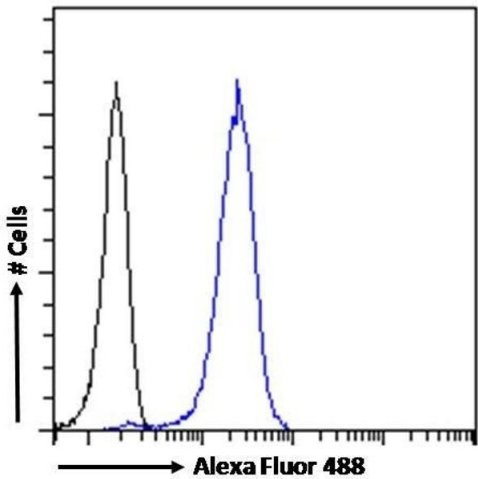
Handling

Format:	Liquid
Concentration:	0.5 mg/mL
Buffer:	Supplied at 0.5 mg/mL in Tris saline, 0.02 % sodium azide, pH 7.3 with 0.5 % bovine serum albumin.
Preservative:	Sodium azide
Precaution of Use:	This product contains Sodium azide: a POISONOUS AND HAZARDOUS SUBSTANCE which should be handled by trained staff only.

Handling

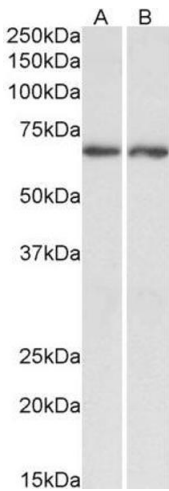
Handling Advice:	Minimize freezing and thawing.
Storage:	-20 °C
Storage Comment:	Aliquot and store at -20°C, with minimal freeze/thawing. A working aliquot may be refrigerated at 4°C for a few weeks and still remain viable.

Images



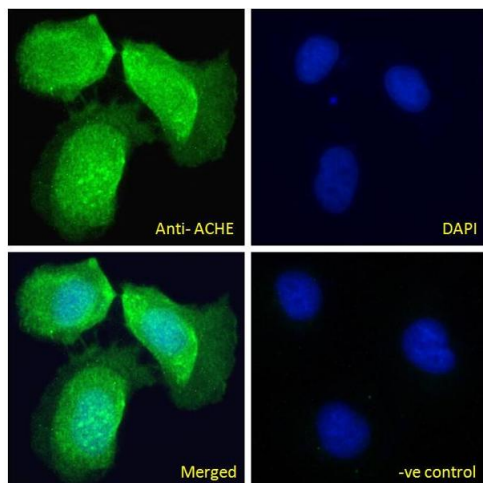
Flow Cytometry

Image 1. (ABIN185357) Flow cytometric analysis of paraformaldehyde fixed HeLa cells (blue line), permeabilized with 0.5 % Triton. Primary incubation 1hr (10 µg/mL) followed by Alexa Fluor 488 secondary antibody (1 µg/mL). IgG control: Unimmunized goat IgG (black line) f



Western Blotting

Image 2. Antibody (0.3µg/ml) staining of Human Brain (Cerebellum) lysate (35µg protein in RIPA buffer). Primary incubation was 1 hour. Detected by chemiluminescence.



Immunofluorescence

Image 3. ABIN185357 Immunofluorescence analysis of paraformaldehyde fixed U2OS cells, permeabilized with 0.15% Triton. Primary incubation 1hr (10ug/ml) followed by Alexa Fluor 488 secondary antibody (4ug/ml), showing cytoplasmic and nuclear/Vesicle staining. The nucl

Please check the [product details page](#) for more images. Overall 11 images are available for ABIN185357.