



[Go to Product page](#)

Datasheet for ABIN185363  
**anti-MOG antibody (C-Term)**

2 Images

Overview

Quantity:	100 µg
Target:	MOG
Binding Specificity:	C-Term
Reactivity:	Human
Host:	Goat
Clonality:	Polyclonal
Conjugate:	This MOG antibody is un-conjugated
Application:	Western Blotting (WB), ELISA

Product Details

Purpose:	MOG
Immunogen:	Peptide with sequence C-AGQFLEELRNPF, from the C Terminus of the protein sequence according to NP_996532.2, NP_996535.2, NP_001008229.1.
Sequence:	AGQFLEELRN PF
Isotype:	IgG
Specificity:	This antibody is expected to recognise NP_996532.2 (isf a1), NP_996535.2 (isf a2) and NP_001008229.1 (isf a3)
Cross-Reactivity:	Cow, Human, Mouse, Pig, Rat
Purification:	Purified from goat serum by ammonium sulphate precipitation followed by antigen affinity chromatography using the immunizing peptide.

## Product Details

---

Grade: Verified

## Target Details

---

Target: MOG

Alternative Name: MOG ([MOG Products](#))

Background: MOG, MGC26137, myelin oligodendrocyte glycoprotein, DAQB-92E24.2, MOGIG-2, MOG Ig-AluB, MOG alpha-6

Gene ID: 4340

NCBI Accession: [NP\\_996532](#), [NP\\_996535](#), [NP\\_001008229](#)

## Application Details

---

Application Notes: Western Blot: Western Blot: Approx 26 kDa band observed in Human Brain lysates (calculated MW of 25.4 kDa according to NP\_001008229.1). Recommended concentration: 0.03-0.1 µg/mL. Primary incubation was for 1 hour.

Peptide ELISA: antibody detection limit dilution 1:16000.

Restrictions: For Research Use only

## Handling

---

Format: Liquid

Concentration: 0.5 mg/mL

Buffer: Supplied at 0.5 mg/mL in Tris saline, 0.02 % sodium azide, pH 7.3 with 0.5 % bovine serum albumin.

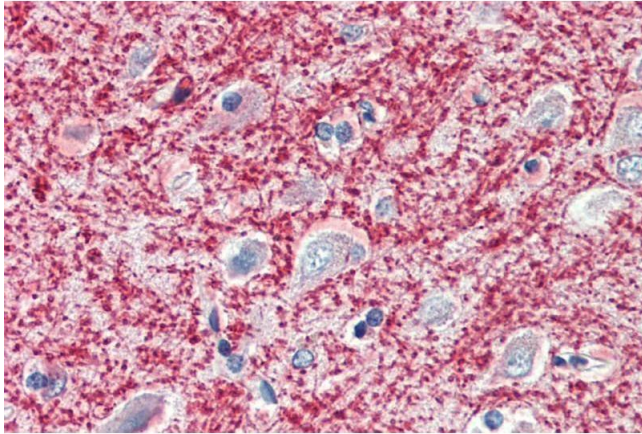
Preservative: Sodium azide

Precaution of Use: This product contains Sodium azide: a POISONOUS AND HAZARDOUS SUBSTANCE which should be handled by trained staff only.

Handling Advice: Minimize freezing and thawing.

Storage: -20 °C

Storage Comment: Aliquot and store at -20°C, with minimal freeze/thawing. A working aliquot may be refrigerated at 4°C for a few weeks and still remain viable.



### Immunohistochemistry

**Image 1.** ABIN185363 (5 $\mu$ g/ml) staining of paraffin embedded Human Cortex. Steamed antigen retrieval with citrate buffer pH 6, AP-staining.



### Western Blotting

**Image 2.** ABIN185363 staining (0.03 $\mu$ g/ml) of Human Brain lysate (RIPA buffer, 30 $\mu$ g total protein per lane). Primary incubated for 1 hour. Detected by chemiluminescence.