

Datasheet for ABIN185365
anti-RBP1 antibody (C-Term)

6 Images

[Go to Product page](#)

Overview

Quantity:	100 µg
Target:	RBP1
Binding Specificity:	C-Term
Reactivity:	Human, Mouse
Host:	Goat
Clonality:	Polyclonal
Conjugate:	This RBP1 antibody is un-conjugated
Application:	Western Blotting (WB), Immunofluorescence (IF), ELISA, Flow Cytometry (FACS)

Product Details

Purpose:	RBP1
Immunogen:	Peptide with sequence VEGVVCKQVFKKVQ, from the C Terminus of the protein sequence according to NP_002890.1.
Sequence:	VEGVVCKQVF KKVQ
Isotype:	IgG
Cross-Reactivity:	Cow, Human, Mouse
Purification:	Purified from goat serum by ammonium sulphate precipitation followed by antigen affinity chromatography using the immunizing peptide.
Grade:	Verified

Target Details

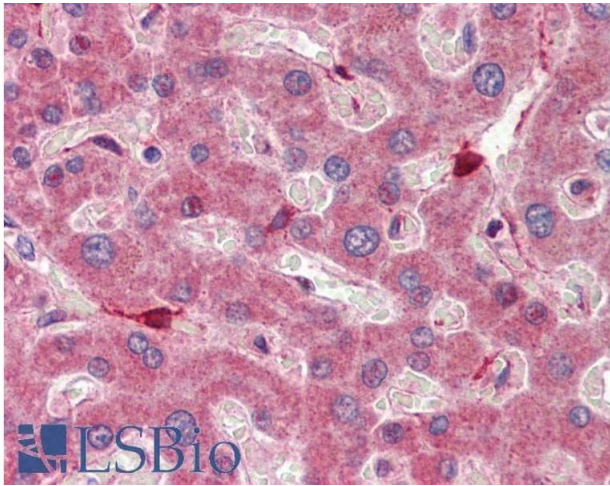
Target:	RBP1
Alternative Name:	RBP1 (RBP1 Products)
Background:	RBP1, CRBP, RBPC, CRBP1, CRABP-I, retinol binding protein 1, cellular, retinol-binding protein 1, cellular, CRBPI
Gene ID:	5947
NCBI Accession:	NP_002890

Application Details

Application Notes:	Western Blot: Approx 16 kDa band observed in NIH3T3 and approx 17 kDa in U251 cell lysates. This molecular weight is routinely observed by other sources. (calculated MW of 22.3 kDa according to Human NP_002890.2 and 15.8 kDa according to Mouse NP_035384.1). Peptide ELISA: antibody detection limit dilution 1:4000.
Comment:	Immunofluorescence: Expression of the protein seen in the cytoplasm and nucleus of U2OS cells. Recommended concentration: 10µg/ml. Flow Cytometry: Flow cytometric analysis of HeLa cells. Recommended concentration: 10u
Restrictions:	For Research Use only

Handling

Format:	Liquid
Concentration:	0.5 mg/mL
Buffer:	Supplied at 0.5 mg/mL in Tris saline, 0.02 % sodium azide, pH 7.3 with 0.5 % bovine serum albumin.
Preservative:	Sodium azide
Precaution of Use:	This product contains Sodium azide: a POISONOUS AND HAZARDOUS SUBSTANCE which should be handled by trained staff only.
Handling Advice:	Minimize freezing and thawing.
Storage:	-20 °C
Storage Comment:	Aliquot and store at -20°C, with minimal freeze/thawing. A working aliquot may be refrigerated at 4°C for a few weeks and still remain viable.



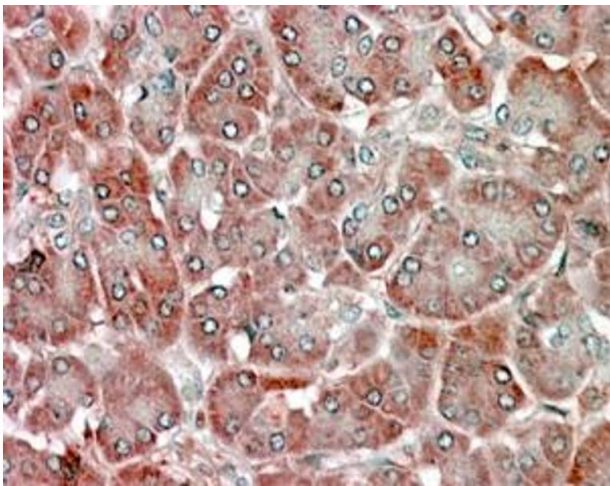
Immunohistochemistry

Image 1. ABIN185365 (5µg/ml) staining of paraffin embedded Human Liver. Steamed antigen retrieval with citrate buffer pH 6, AP-staining. This data is from a previous batch, not on sale.



Western Blotting

Image 2. ABIN185365 (2µg/ml) staining of NIH3T3 (A) and (0.5ug/ml) of U251 (B) cell lysate (35µg protein in RIPA buffer). Detected by chemiluminescence.



Immunohistochemistry

Image 3. ABIN185365 (5µg/ml) staining of paraffin embedded Human Pancreas. Steamed antigen retrieval with citrate buffer pH 6, AP-staining. This data is from a previous batch, not on sale.

Please check the [product details page](#) for more images. Overall 6 images are available for ABIN185365.