

Datasheet for ABIN185368
anti-WASP antibody (Internal Region)[Go to Product page](#)

4 Images

Overview

Quantity:	100 µg
Target:	WASP (WAS)
Binding Specificity:	Internal Region
Reactivity:	Human
Host:	Goat
Clonality:	Polyclonal
Conjugate:	This WASP antibody is un-conjugated
Application:	ELISA, Immunohistochemistry (IHC), Flow Cytometry (FACS), Immunofluorescence (IF)

Product Details

Purpose:	Wiskott-Aldrich Syndrome / WASP
Immunogen:	Peptide with sequence C-SPADKKRSGKKKI, from the internal region of the protein sequence according to NP_000368.1.
Sequence:	SPADKKRSGK KKI
Isotype:	IgG
Specificity:	No cross-reactivity expected with N WASP (WASL).
Cross-Reactivity:	Dog, Human, Mouse, Rat
Purification:	Purified from goat serum by ammonium sulphate precipitation followed by antigen affinity chromatography using the immunizing peptide.
Grade:	Verified

Target Details

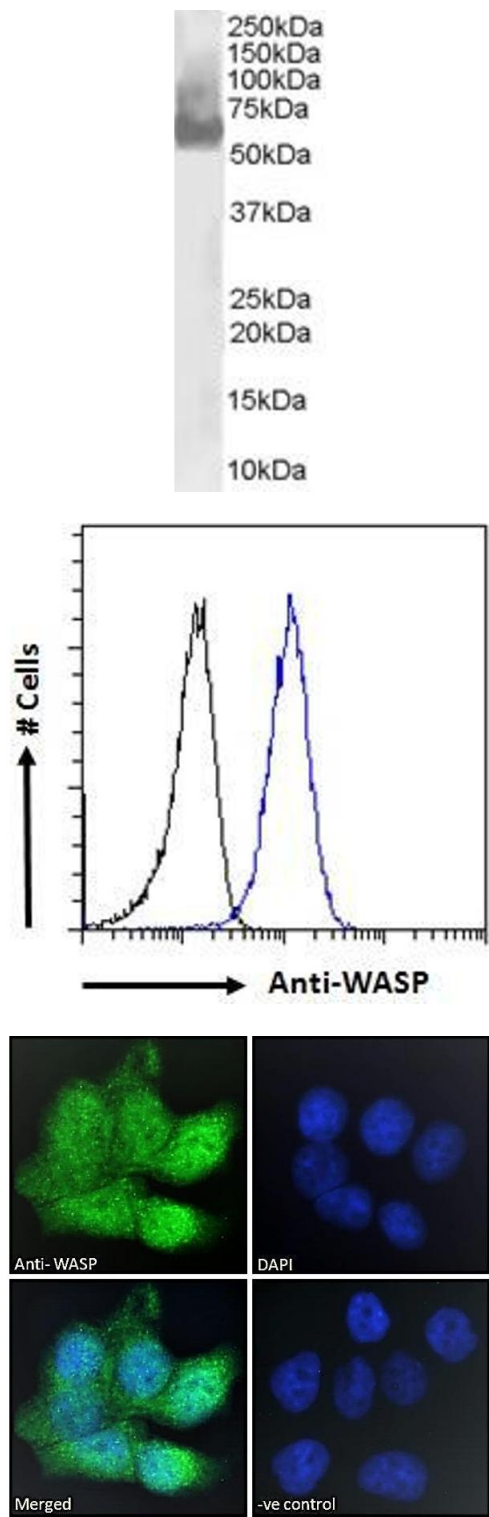
Target:	WASP (WAS)
Alternative Name:	WAS (WAS Products)
Background:	WAS, WASP, Wiskott-Aldrich syndrome (eczema-thrombocytopenia), THC, IMD2, thrombocytopenia 1 (X-linked), Wiskott-Aldrich syndrome (eczema-thrombocytopenia) protein, THC1, Wiskott-Aldrich syndrome protein
Gene ID:	7454
NCBI Accession:	NP_000368

Application Details

Application Notes:	Immunohistochemistry: Paraffin embedded Human Spleen. Recommended concentration: 5 µg/mL. Peptide ELISA: antibody detection limit dilution 1:128000.
Comment:	Immunofluorescence: Strong expression of the protein seen in the nuclei and cytoplasm of HepG2 and U2OS cells. Recommended concentration: 10µg/ml. Flow Cytometry: Flow cytometric analysis of HepG2 cells. Recommended co
Restrictions:	For Research Use only

Handling

Format:	Liquid
Concentration:	0.5 mg/mL
Buffer:	Supplied at 0.5 mg/mL in Tris saline, 0.02 % sodium azide, pH 7.3 with 0.5 % bovine serum albumin.
Preservative:	Sodium azide
Precaution of Use:	This product contains Sodium azide: a POISONOUS AND HAZARDOUS SUBSTANCE which should be handled by trained staff only.
Handling Advice:	Minimize freezing and thawing.
Storage:	-20 °C
Storage Comment:	Aliquot and store at -20°C, with minimal freeze/thawing. A working aliquot may be refrigerated at 4°C for a few weeks and still remain viable.



Western Blotting

Image 1. ABIN185368 staining (0.03 ug/ml) of U937 lysate (RIPA buffer, 30 ug total protein per lane). Primary incubated for 1 hour. Detected by western blot using chemiluminescence.

Flow Cytometry

Image 2. ABIN185368 Flow cytometric analysis of paraformaldehyde fixed HepG2 cells (blue line), permeabilized with 0.5% Triton. Primary incubation 1hr (10ug/ml) followed by Alexa Fluor 488 secondary antibody (1ug/ml). IgG control: Unimmunized goat IgG (black line) followed by Alexa Fluor 488 secondary antibody.

Immunofluorescence

Image 3. ABIN185368 Immunofluorescence analysis of paraformaldehyde fixed HepG2 cells, permeabilized with 0.15% Triton. Primary incubation 1hr (10ug/ml) followed by Alexa Fluor 488 secondary antibody (2ug/ml), showing nuclear and cytoplasmic staining. The nuclear stain is DAPI (blue).

Please check the [product details page](#) for more images. Overall 4 images are available for ABIN185368.