

Datasheet for ABIN185372
anti-NPM1 antibody (C-Term)

5 Images

[Go to Product page](#)

Overview

Quantity:	100 µg
Target:	NPM1
Binding Specificity:	C-Term
Reactivity:	Human, Mouse
Host:	Goat
Clonality:	Polyclonal
Conjugate:	This NPM1 antibody is un-conjugated
Application:	Western Blotting (WB), Immunohistochemistry (IHC), ELISA, Immunofluorescence (IF)

Product Details

Purpose:	Nucleophosmin / NPM1
Immunogen:	Peptide with sequence C-QEAIQDLWQWRKSL, from the C Terminus of the protein sequence according to NP_002511.1, NP_954654.1.
Sequence:	QEAIQDLWQW RKSL
Isotype:	IgG
Cross-Reactivity:	Cow, Dog, Human, Mouse, Rat
Purification:	Purified from goat serum by ammonium sulphate precipitation followed by antigen affinity chromatography using the immunizing peptide.
Grade:	Verified

Target Details

Target:	NPM1
Alternative Name:	NPM1 (NPM1 Products)
Background:	NPM1, NPM, B23, nucleophosmin (nucleolar phosphoprotein B23, numatrin), numatrin, nucleolar phosphoprotein B23, nucleophosmin/nucleoplasmin family, member 1, MGC104254, nucleophosmin 1
Gene ID:	4869
NCBI Accession:	NP_001341935 , NP_954654 , NP_001341936 , NP_001341939
Pathways:	Ribonucleoprotein Complex Subunit Organization , Ribosome Assembly

Application Details

Application Notes:	Immunohistochemistry: Paraffin embedded Human Testis. Recommended concentration: 5 µg/mL. Western Blot: Approx 37 kDa band observed in lysates of cell lines Daudi, Jurkat, K562 and NIH3T3 and in Mouse Spleen lysates (calculated MW of 32.6 kDa according to Human NP_001341935.1 and Mouse NP_032748.1). This molecular weight is routinely observed b Peptide ELISA: antibody detection limit dilution 1:8000.
Comment:	Immunofluorescence: Strong expression of the protein seen in the nucleoli of HeLa cells. Recommended concentration: 10µg/ml.
Restrictions:	For Research Use only

Handling

Format:	Liquid
Concentration:	0.5 mg/mL
Buffer:	Supplied at 0.5 mg/mL in Tris saline, 0.02 % sodium azide, pH 7.3 with 0.5 % bovine serum albumin.
Preservative:	Sodium azide
Precaution of Use:	This product contains Sodium azide: a POISONOUS AND HAZARDOUS SUBSTANCE which should be handled by trained staff only.
Handling Advice:	Minimize freezing and thawing.
Storage:	-20 °C

Handling

Storage Comment: Aliquot and store at -20°C, with minimal freeze/thawing. A working aliquot may be refrigerated at 4°C for a few weeks and still remain viable.

Images

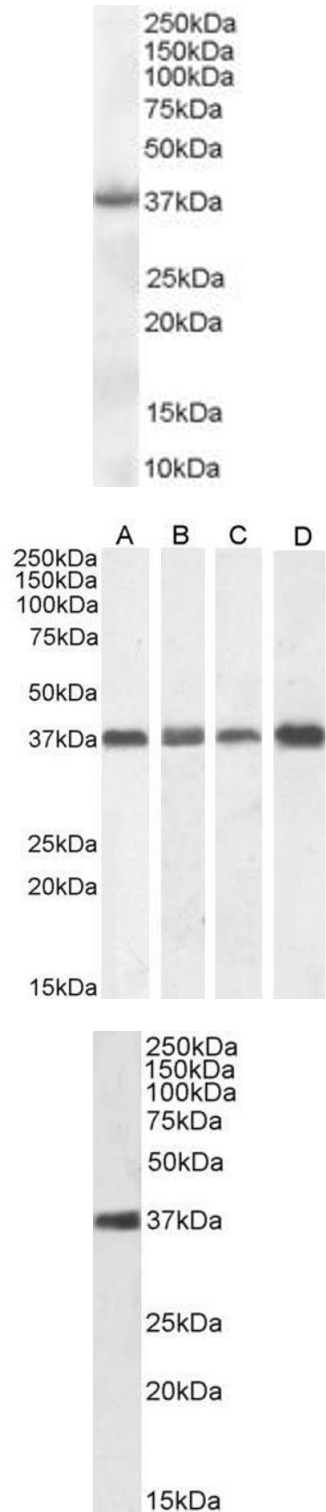


Image 1. ABIN185372 (0.1µg/ml) staining of Hela lysate (35µg protein in RIPA buffer). Primary incubation was 1 hour. Detected by chemiluminescence.

Western Blotting

Image 2. ABIN185372 (1µg/ml) staining of NIH3T3 (A), (0.1ug/ml) Daudi (B), Jurkat (C) and (0.01ug/ml) K562 (D) cell lysate (35µg protein in RIPA buffer). Detected by chemiluminescence.

Western Blotting

Image 3. ABIN185372 (1µg/ml) staining of Mouse Spleen lysate (35µg protein in RIPA buffer). Detected by chemiluminescence.

Please check the [product details page](#) for more images. Overall 5 images are available for ABIN185372.