

Datasheet for ABIN185373  
**anti-Neuroserpin antibody (C-Term)**

## 5 Images

[Go to Product page](#)

## Overview

Quantity:	100 µg
Target:	Neuroserpin (SERPINI1)
Binding Specificity:	C-Term
Reactivity:	Human, Mouse, Rat
Host:	Goat
Clonality:	Polyclonal
Conjugate:	This Neuroserpin antibody is un-conjugated
Application:	Western Blotting (WB), ELISA, Immunohistochemistry (IHC), Flow Cytometry (FACS)

## Product Details

Purpose:	Neuroserpin
Immunogen:	Peptide with sequence C-TMNTSGHDFEEL, from the C Terminus of the protein sequence according to NP_005016.1.
Sequence:	TMNTSGHDFE EL
Isotype:	IgG
Specificity:	Reported variants represent identical protein (NP_005016.1, NP_001116224.1).
Cross-Reactivity:	Cow, Human, Mouse, Pig, Rat
Purification:	Purified from goat serum by ammonium sulphate precipitation followed by antigen affinity chromatography using the immunizing peptide.
Grade:	Verified

## Target Details

Target:	Neuroserpin (SERPINI1)
Alternative Name:	SERPINI1 ( <a href="#">SERPINI1 Products</a> )
Background:	SERPINI1, neuroserpin, PI12, serine (or cysteine) proteinase inhibitor, clade I (neuroserpin), member 1, protease inhibitor 12 (neuroserpin), serpin peptidase inhibitor, clade I (neuroserpin), member 1, DKFZp781N13156
Gene ID:	5274
NCBI Accession:	<a href="#">NP_005016</a>
Pathways:	<a href="#">Regulation of Hormone Metabolic Process</a>

## Application Details

Application Notes:	Immunohistochemistry: Paraffin embedded Human Brain (Cortex). Recommended concentration: 5 µg/mL.  Western Blot: Approx 48 kDa band observed in lysates of cell lines Kelly and K562 and in Human Placenta and Mouse and Rat Brain lysates (calculated MW of 46.4 kDa according to Human NP_005016.1, Mouse NP_033276.1 and Rat NP_446231.1). Recommended concentration: 1 µg/mL.  Peptide ELISA: antibody detection limit dilution 1:32000.
Comment:	<b>Flow Cytometry:</b> Flow cytometric analysis of HeLa cells. Recommended concentration: 10 µg/mL.
Restrictions:	For Research Use only

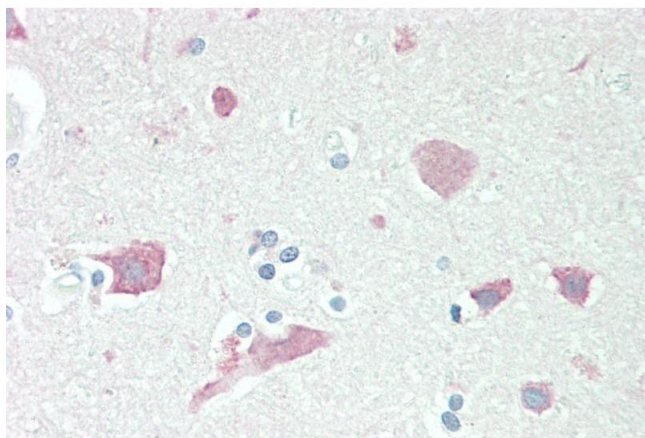
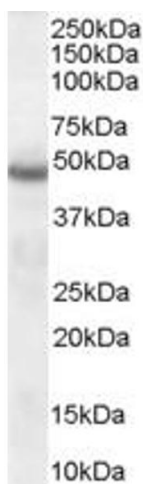
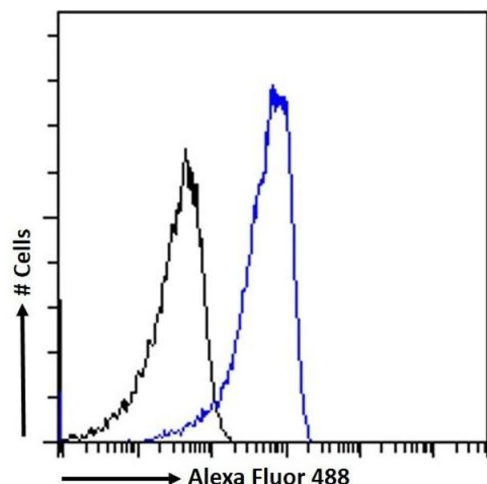
## Handling

Format:	Liquid
Concentration:	0.5 mg/mL
Buffer:	Supplied at 0.5 mg/mL in Tris saline, 0.02 % sodium azide, pH 7.3 with 0.5 % bovine serum albumin.
Preservative:	Sodium azide
Precaution of Use:	This product contains Sodium azide: a POISONOUS AND HAZARDOUS SUBSTANCE which should be handled by trained staff only.
Handling Advice:	Minimize freezing and thawing.
Storage:	-20 °C

## Handling

Storage Comment: Aliquot and store at -20°C, with minimal freeze/thawing. A working aliquot may be refrigerated at 4°C for a few weeks and still remain viable.

## Images



### Flow Cytometry

**Image 1.** (ABIN185373) Flow cytometric analysis of paraformaldehyde fixed HeLa cells (blue line), permeabilized with 0.5 % Triton. Primary incubation 1hr (10 µg/mL) followed by Alexa Fluor 488 secondary antibody (1 µg/mL). IgG control: Unimmunized goat IgG (black line) followed by Alexa Fluor 488 secondary antibody.

### Western Blotting

**Image 2.** ABIN185373 (1µg/ml) staining of Human Brain lysate (35µg protein in RIPA buffer). Detected by chemiluminescence.

### Immunohistochemistry

**Image 3.** ABIN185373 (5µg/ml) staining of paraffin embedded Human Cortex. Steamed antigen retrieval with citrate buffer pH 6, AP-staining.

Please check the [product details page](#) for more images. Overall 5 images are available for ABIN185373.