

Datasheet for ABIN185374

anti-SERPINI2 antibody (Internal Region)



[Go to Product page](#)

2 Images

1 Publication

Overview

Quantity:	100 µg
Target:	SERPINI2
Binding Specificity:	Internal Region
Reactivity:	Human
Host:	Goat
Clonality:	Polyclonal
Conjugate:	This SERPINI2 antibody is un-conjugated
Application:	Western Blotting (WB), ELISA, Immunohistochemistry (IHC)

Product Details

Purpose:	MEPI / SERPINI2
Immunogen:	Peptide with sequence C-KGDWKQKFRKEDTQ, from the internal region of the protein sequence according to NP_006208.1, NP_001012303.1.
Sequence:	KGDWKQKFRK EDTQ
Isotype:	IgG
Specificity:	This antibody is expected to recognise both reported isoforms (NP_006208.1, NP_001012303.1).
Cross-Reactivity:	Dog, Human, Mouse, Rat
Purification:	Purified from goat serum by ammonium sulphate precipitation followed by antigen affinity chromatography using the immunizing peptide.

Product Details

Grade: Verified

Target Details

Target: SERPINI2

Alternative Name: SERPINI2 ([SERPINI2 Products](#))

Background: SERPINI2, MEPI, PI14, PANCPIN, TSA2004, SERPIN12, serine (or cysteine) proteinase inhibitor, clade I (neuroserpin), member 2, serpin peptidase inhibitor, clade I (pancpin), member 2, myoepithelium-derived serine protease inhibitor, protease inhibitor 14,

Gene ID: 5276, 67931, 171149

NCBI Accession: [NP_006208](#), [NP_001012303](#)

Application Details

Application Notes: Immunohistochemistry: In paraffin embedded Human Pancreas, shows cytoplasmic staining of acinar cells and of rare cells in the islets of Langerhans. Recommended concentration, 3 µg/mL. This product has been successfully used in IHC on Human in PMID: 214992
Western Blot: Approx 40 kDa band observed in Human Pancreas lysates (calculated MW of 46.1 kDa according to NP_006208.1 and 47.4 kDa according to NP_001012303.1). Recommended concentration: 0.3-1 µg/mL. Primary incubation was 1 hour. This product has been s
Peptide ELISA: antibody detection limit dilution 1:64000.

Restrictions: For Research Use only

Handling

Format: Liquid

Concentration: 0.5 mg/mL

Buffer: Supplied at 0.5 mg/mL in Tris saline, 0.02 % sodium azide, pH 7.3 with 0.5 % bovine serum albumin.

Preservative: Sodium azide

Precaution of Use: This product contains Sodium azide: a POISONOUS AND HAZARDOUS SUBSTANCE which should be handled by trained staff only.

Handling Advice: Minimize freezing and thawing.

Handling

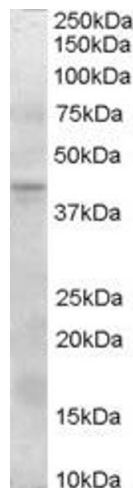
Storage: -20 °C

Storage Comment: Aliquot and store at -20°C, with minimal freeze/thawing. A working aliquot may be refrigerated at 4°C for a few weeks and still remain viable.

Publications

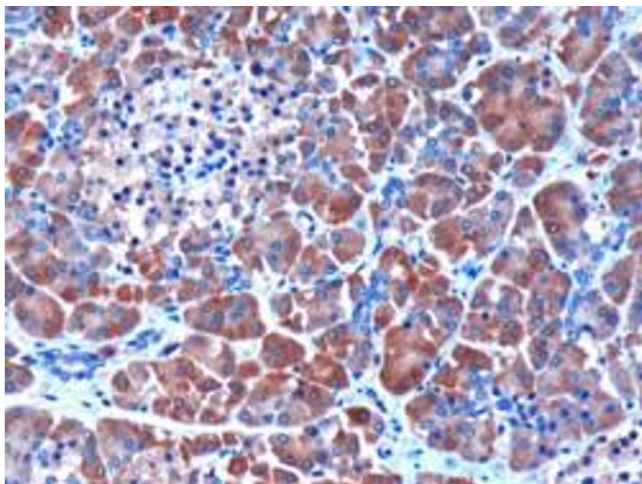
Product cited in: Wehr, Furth, Sangar, Blair, Yu: "Analysis of the human pancreatic stellate cell secreted proteome." in: **Pancreas**, Vol. 40, Issue 4, pp. 557-66, (2011) ([PubMed](#)).

Images



Western Blotting

Image 1. ABIN185374 (0.3µg/ml) staining of Human Pancreas lysate (35µg protein in RIPA buffer). Detected by chemiluminescence.



Immunohistochemistry

Image 2. ABIN185374 (3µg/ml) staining of paraffin embedded Human Pancreas. Microwaved antigen retrieval with citrate buffer pH 6, HRP-staining