

Datasheet for ABIN185382  
**anti-PPP2R1A antibody (C-Term)**

## 2 Images

[Go to Product page](#)

## Overview

Quantity:	100 µg
Target:	PPP2R1A
Binding Specificity:	C-Term
Reactivity:	Human
Host:	Goat
Clonality:	Polyclonal
Conjugate:	This PPP2R1A antibody is un-conjugated
Application:	Western Blotting (WB), ELISA

## Product Details

Purpose:	PP2A / PPP2R1A
Immunogen:	Peptide with sequence C-KYFAQEALTVLSLA, from the C Terminus of the protein sequence according to NP_055040.2.
Sequence:	KYFAQEALTV LSLA
Isotype:	IgG
Cross-Reactivity:	Cow, Dog, Human, Mouse, Pig, Rat
Purification:	Purified from goat serum by ammonium sulphate precipitation followed by antigen affinity chromatography using the immunizing peptide.
Grade:	Verified

### Target Details

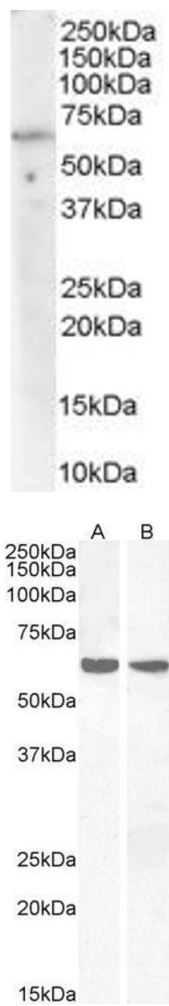
Target:	PPP2R1A
Alternative Name:	PPP2R1A ( <a href="#">PPP2R1A Products</a> )
Background:	PPP2R1A, MGC786, protein phosphatase 2 (formerly 2A), regulatory subunit A (PR 65), alpha isoform, PP2A, subunit A, R1-alpha isoform, PP2A, subunit A, PR65-alpha isoform, medium tumor antigen-associated 61 KDA protein, Serine/threonine protein phosphatase
Gene ID:	5518
NCBI Accession:	<a href="#">NP_055040</a>
Pathways:	<a href="#">PI3K-Akt Signaling</a> , <a href="#">Mitotic G1-G1/S Phases</a> , <a href="#">M Phase</a> , <a href="#">Hepatitis C</a> , <a href="#">Toll-Like Receptors Cascades</a>

### Application Details

Application Notes:	Western Blot: Approx 60-65 kDa band observed in Human Thymus and Human Lymph node lysates (calculated MW of 65.3 kDa according to NP_055040.2). Recommended concentration: 2-6 µg/mL. Peptide ELISA: antibody detection limit dilution 1:4000.
Restrictions:	For Research Use only

### Handling

Format:	Liquid
Concentration:	0.5 mg/mL
Buffer:	Supplied at 0.5 mg/mL in Tris saline, 0.02 % sodium azide, pH 7.3 with 0.5 % bovine serum albumin.
Preservative:	Sodium azide
Precaution of Use:	This product contains Sodium azide: a POISONOUS AND HAZARDOUS SUBSTANCE which should be handled by trained staff only.
Handling Advice:	Minimize freezing and thawing.
Storage:	-20 °C
Storage Comment:	Aliquot and store at -20°C, with minimal freeze/thawing. A working aliquot may be refrigerated at 4°C for a few weeks and still remain viable.



**Image 1.** ABIN185382 (0.03µg/ml) staining of Human Lymph Node lysate (35µg protein in RIPA buffer). Primary incubation was 1 hour. Detected by chemiluminescence.



### Western Blotting

**Image 2.** ABIN185382 (2µg/ml) staining of Human Thymus (A) and Human Lymph node (B) lysates (35µg protein in RIPA buffer). Primary incubation was 1 hour. Detected by chemiluminescence.