



[Go to Product page](#)

Datasheet for ABIN185384

## anti-PAI1 antibody (Internal Region)

5 Images

1 Publication

### Overview

Quantity:	100 µg
Target:	PAI1 (SERPINE1)
Binding Specificity:	Internal Region
Reactivity:	Human
Host:	Goat
Clonality:	Polyclonal
Conjugate:	This PAI1 antibody is un-conjugated
Application:	Western Blotting (WB), ELISA, Immunohistochemistry (IHC)

### Product Details

Purpose:	PAI1 / SERPINE1
Immunogen:	Peptide with sequence C-GFKIDDKGMAPALRH, from the internal region of the protein sequence according to NP_000593.1, NP_001158885.1.
Sequence:	GFKIDDKGMA PALRH
Isotype:	IgG
Cross-Reactivity:	Dog, Human
Purification:	Purified from goat serum by ammonium sulphate precipitation followed by antigen affinity chromatography using the immunizing peptide.
Grade:	Verified

## Target Details

---

Target:	PAI1 (SERPINE1)
Alternative Name:	SERPINE1 ( <a href="#">SERPINE1 Products</a> )
Background:	SERPINE1, PAI1, PAI, PAI-1, PLANH1, serine (or cysteine) proteinase inhibitor, clade E (nexin, plasminogen activator inhibitor type 1), member 1, plasminogen activator inhibitor, type I, serpin peptidase inhibitor, clade E (nexin, plasminogen activator in
Molecular Weight:	45.1kDa
Gene ID:	5054
NCBI Accession:	<a href="#">NP_000593</a>
Pathways:	<a href="#">p53 Signaling</a> , <a href="#">Cellular Response to Molecule of Bacterial Origin</a> , <a href="#">Carbohydrate Homeostasis</a> , <a href="#">Autophagy</a> , <a href="#">Smooth Muscle Cell Migration</a>

## Application Details

---

Application Notes:	<p>Immunohistochemistry: In paraffin embedded Human Placenta shows strong staining of cytotrophoblasts. Recommended concentration: 4-6 µg/mL. A customer successfully used this product on Human Breast cancer.</p> <p>Western Blot: Approx 48 kDa band observed in Human Liver and HeLa lysates, while approx. 45 kDa observed in lyates of cell lines A549 and HepG2 (calculated MW of 45.1 kDa according to NP_000593.1). This molecular weight is routinely observed by other source</p> <p>Peptide ELISA: antibody detection limit dilution 1:64000.</p>
Restrictions:	For Research Use only

## Handling

---

Format:	Liquid
Concentration:	0.5 mg/mL
Buffer:	Supplied at 0.5 mg/mL in Tris saline, 0.02 % sodium azide, pH 7.3 with 0.5 % bovine serum albumin.
Preservative:	Sodium azide
Precaution of Use:	This product contains Sodium azide: a POISONOUS AND HAZARDOUS SUBSTANCE which should be handled by trained staff only.
Handling Advice:	Minimize freezing and thawing.

## Handling

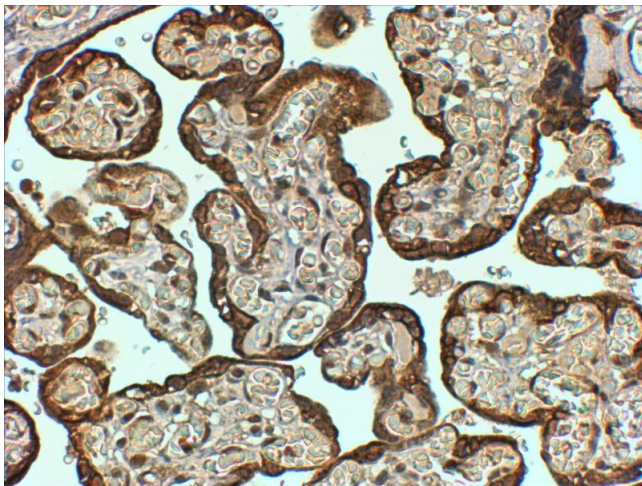
Storage: -20 °C

Storage Comment: Aliquot and store at -20°C, with minimal freeze/thawing. A working aliquot may be refrigerated at 4°C for a few weeks and still remain viable.

## Publications

Product cited in: Kozaczuk, Selmi, Bednarek: "Bacterial expression, purification and angiogenesis-promoting activity of human thymosin  $\beta$ 4." in: **Protein expression and purification**, Vol. 90, Issue 2, pp. 142-52, (2013) ([PubMed](#)).

## Images

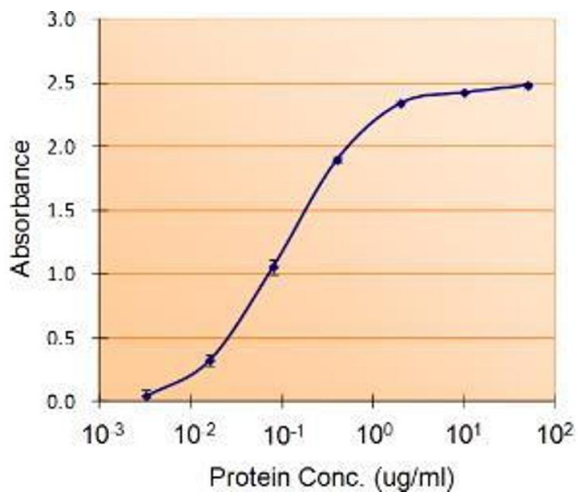


### Immunohistochemistry

**Image 1.** ABIN185384 (4µg/ml) staining of paraffin embedded Human Placenta. Steamed antigen retrieval with Tris/EDTA buffer pH 9, HRP-staining.



**Image 2.** ABIN185384 (0.1µg/ml) staining of Human Liver lysate (35µg protein in RIPA buffer). Primary incubation was 1 hour. Detected by chemiluminescence.



### Enzyme Immunoassay

**Image 3.** ABIN185384 (1.5ug/ml) as the reporter with as the capture rabbit antibody (2.5ug/ml).

Please check the [product details page](#) for more images. Overall 5 images are available for ABIN185384.