

Datasheet for ABIN185387
anti-POMC antibody (C-Term)

6 Images

[Go to Product page](#)

Overview

Quantity:	100 µg
Target:	POMC
Binding Specificity:	C-Term
Reactivity:	Human
Host:	Goat
Clonality:	Polyclonal
Conjugate:	This POMC antibody is un-conjugated
Application:	ELISA, Immunohistochemistry (IHC), Flow Cytometry (FACS)

Product Details

Purpose:	Proopiomelanocortin / POMC
Immunogen:	Peptide with sequence C-NAIIKNAYKKGE, from the C Terminus of the protein sequence according to NP_000930.1, NP_001030333.1.
Sequence:	NAIIKNAYKK GE
Isotype:	IgG
Cross-Reactivity:	Human
Purification:	Purified from goat serum by ammonium sulphate precipitation followed by antigen affinity chromatography using the immunizing peptide.
Grade:	Verified

Target Details

Target:	POMC
Alternative Name:	POMC (POMC Products)
Background:	POMC, proopiomelanocortin, Precursor of MSH, POC, ACTH, CLIP, adrenocorticotropin/ beta-lipotropin/ alpha-melanocyte stimulating hormone/ beta-melanocyte stimulating, hormone/ beta-endorphin, LPH, NPP, OTTHUMP00000119991, OTTHUMP00000200964, adrenocortic
Gene ID:	5443
NCBI Accession:	NP_000930 , NP_001030333
Pathways:	Metabolism of Steroid Hormones and Vitamin D , Peptide Hormone Metabolism , Hormone Activity , Feeding Behaviour

Application Details

Application Notes:	Immunohistochemistry: In paraffin embedded Human Anterior Pituitary Gland shows vesilulate staining in glandular cells. Recommended concentration: 2-4 µg/mL. Western Blot: Preliminary testing showed a band at approx 30 kDa in A431 cell lysate after 1 µg/mL antibody staining (calculated MW of 29.4 kDa according to NP_000930.1). Primary incubation 1 hour at room temperature. Peptide ELISA: antibody detection limit dilution 1:128000.
Comment:	Flow Cytometry: Flow cytometric analysis of A431 cells. Recommended concentration: 10ug/ml.
Restrictions:	For Research Use only

Handling

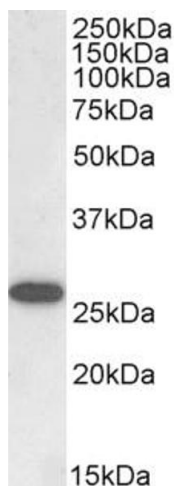
Format:	Liquid
Concentration:	0.5 mg/mL
Buffer:	Supplied at 0.5 mg/mL in Tris saline, 0.02 % sodium azide, pH 7.3 with 0.5 % bovine serum albumin.
Preservative:	Sodium azide
Precaution of Use:	This product contains Sodium azide: a POISONOUS AND HAZARDOUS SUBSTANCE which should be handled by trained staff only.
Handling Advice:	Minimize freezing and thawing.

Handling

Storage: -20 °C

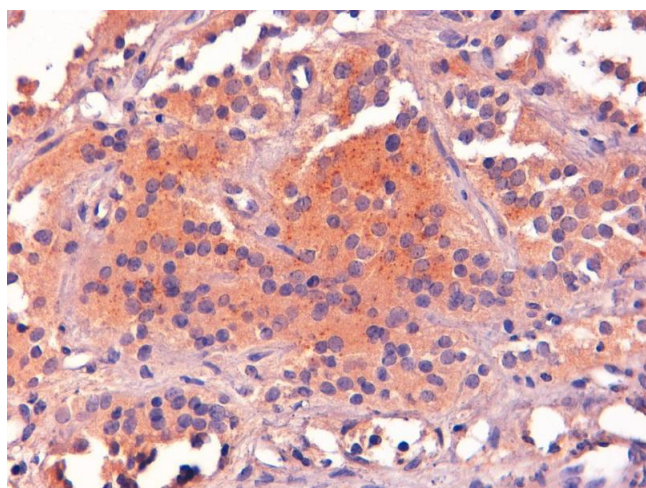
Storage Comment: Aliquot and store at -20°C, with minimal freeze/thawing. A working aliquot may be refrigerated at 4°C for a few weeks and still remain viable.

Images



Western Blotting

Image 1. ABIN185387 (0.3µg/ml) staining of NIH3T3 cell lysate (35µg protein in RIPA buffer). Detected by chemiluminescence.



Immunohistochemistry

Image 2. ABIN185387 (2µg/ml) staining of paraffin embedded Human Pituitary Gland. Steamed antigen retrieval with Tris/EDTA buffer pH 9, HRP-staining.



Image 3. ABIN185387 (0.01µg/ml) staining of NIH 3T3 lysate (35µg protein in RIPA buffer). Primary incubation was 1 hour. Detected by chemiluminescence.

Please check the [product details page](#) for more images. Overall 6 images are available for ABIN185387.