

Datasheet for ABIN185389  
**anti-PDHX antibody (C-Term)**[Go to Product page](#)

## 2 Images

## Overview

Quantity:	100 µg
Target:	PDHX
Binding Specificity:	C-Term
Reactivity:	Human
Host:	Goat
Clonality:	Polyclonal
Conjugate:	This PDHX antibody is un-conjugated
Application:	Western Blotting (WB), ELISA

## Product Details

Purpose:	Pyruvate dehydrogenase / PDHX
Immunogen:	Peptide with sequence C-KSFKANLENPIRLA, from the C Terminus of the protein sequence according to NP_003468.2, NP_001128496.1, NP_001159630.1.
Sequence:	KSFKANLENP IRLA
Isotype:	IgG
Specificity:	This antibody is expected to recognise all reported isoforms.
Cross-Reactivity:	Dog, Human, Mouse, Rat
Purification:	Purified from goat serum by ammonium sulphate precipitation followed by antigen affinity chromatography using the immunizing peptide.
Grade:	Verified

## Target Details

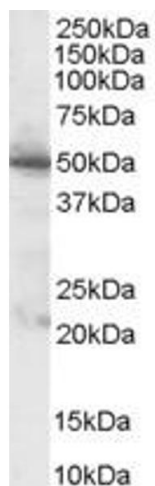
Target:	PDHX
Alternative Name:	PDHX ( <a href="#">PDHX Products</a> )
Background:	PDHX, pyruvate dehydrogenase complex, component X, E3BP, OPDX, PDX1, proX, DLDBP, E3-binding protein, pyruvate dehydrogenase complex, lipoyl-containing component X, dihydrolipoamide dehydrogenase-binding protein of pyruvate dehydrogenase complex, pyruvate
Gene ID:	8050, 27402
NCBI Accession:	<a href="#">NP_003468</a> , <a href="#">NP_001128496</a> , <a href="#">NP_001159630</a>

## Application Details

Application Notes:	Western Blot: Approx 50 kDa band observed in Human Pancreas lysate (calculated MW of 54.2 kDa according to NP_003468.1). In transfected HEK293 transiently expressing PDHX a band of approx. 50 kDa is observed. This band is not observed in the non-transfected Peptide ELISA: antibody detection limit dilution 1:32000.
Restrictions:	For Research Use only

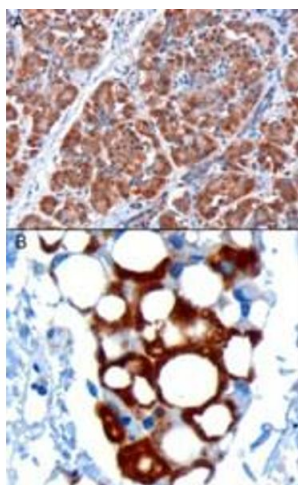
## Handling

Format:	Liquid
Concentration:	0.5 mg/mL
Buffer:	Supplied at 0.5 mg/mL in Tris saline, 0.02 % sodium azide, pH 7.3 with 0.5 % bovine serum albumin.
Preservative:	Sodium azide
Precaution of Use:	This product contains Sodium azide: a POISONOUS AND HAZARDOUS SUBSTANCE which should be handled by trained staff only.
Handling Advice:	Minimize freezing and thawing.
Storage:	-20 °C
Storage Comment:	Aliquot and store at -20°C, with minimal freeze/thawing. A working aliquot may be refrigerated at 4°C for a few weeks and still remain viable.



#### Western Blotting

**Image 1.** ABIN185389 (1µg/ml) staining of Human Pancreas lysate (35µg protein in RIPA buffer). Primary incubation was 1 hour. Detected by chemiluminescence.



#### Immunohistochemistry

**Image 2.** ABIN185389 staining of paraffin embedded Human Pancreas. A) Microwaved antigen retrieval with citrate buffer pH 6 (3µg/ml), HRP-staining. B) Microwaved antigen retrieval with Tris/EDTA buffer pH9 (1µg/ml), HRP-staining.