

Datasheet for ABIN185390
anti-RICTOR antibody (C-Term)



[Go to Product page](#)

1 Image

Overview

Quantity:	100 µg
Target:	RICTOR
Binding Specificity:	C-Term
Reactivity:	Human
Host:	Goat
Clonality:	Polyclonal
Conjugate:	This RICTOR antibody is un-conjugated
Application:	Immunohistochemistry (IHC), ELISA

Product Details

Purpose:	RICTOR
Immunogen:	C-KQPIVD TSAES
Sequence:	KQPIVD TSAE S
Isotype:	IgG
Cross-Reactivity:	Dog, Human, Mouse
Purification:	Purified from goat serum by ammonium sulphate precipitation followed by antigen affinity chromatography using the immunizing peptide.
Grade:	Verified

Target Details

Target:	RICTOR
Alternative Name:	RICTOR (RICTOR Products)
Background:	RICTOR, Rictor, KIAA1999, AVO3, MGC39830, likely ortholog of mouse TORC2-specific protein AVO3 (<i>S. cerevisiae</i>), rapamycin-insensitive companion of mTOR, mAVO3, pianissimo, DKFZp686B11164, RPTOR independent companion of MTOR, complex 2, PIA, mAVO3, TORC2-s
Gene ID:	253260, 78757
NCBI Accession:	NP_689969
Pathways:	Fc-epsilon Receptor Signaling Pathway , EGFR Signaling Pathway , Neurotrophin Signaling Pathway , Regulation of Actin Filament Polymerization , CXCR4-mediated Signaling Events

Application Details

Application Notes:	<p>Immunohistochemistry: In paraffin embedded Kidney shows strong cytoplasmic staining of epithelial cells in distal convoluted tubules. Recommended concentration, 2-3 µg/mL.</p> <p>Western Blot: Preliminary experiments gave an approx 38 kDa band in Human Lung Carcinoma A549 cell line and cervix epitheloid carcinoma cell line HeLa lysates after 0.1 µg/mL antibody staining. Please note that currently we cannot find an explanation in t</p> <p>Peptide ELISA: antibody detection limit dilution 1:4000.</p>
Restrictions:	For Research Use only

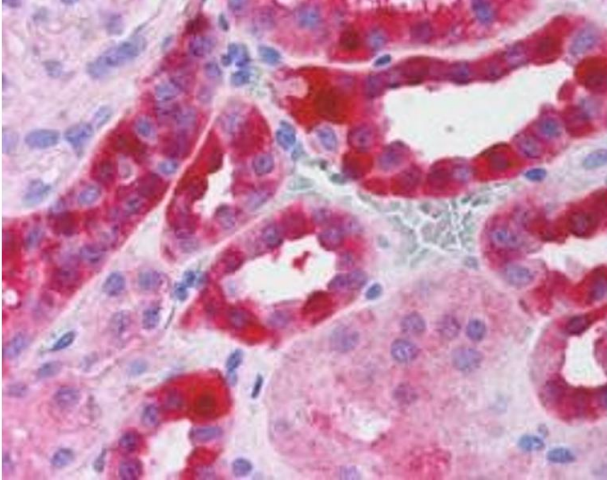
Handling

Format:	Liquid
Concentration:	0.5 mg/mL
Buffer:	Supplied at 0.5 mg/mL in Tris saline, 0.02 % sodium azide, pH 7.3 with 0.5 % bovine serum albumin.
Preservative:	Sodium azide
Precaution of Use:	This product contains Sodium azide: a POISONOUS AND HAZARDOUS SUBSTANCE which should be handled by trained staff only.
Handling Advice:	Minimize freezing and thawing.
Storage:	-20 °C

Handling

Storage Comment: Aliquot and store at -20°C, with minimal freeze/thawing. A working aliquot may be refrigerated at 4°C for a few weeks and still remain viable.

Images



Immunohistochemistry

Image 1. ABIN185390 (2.5µg/ml) staining of paraffin embedded Human Kidney. Steamed antigen retrieval with citrate buffer pH 6, AP-staining.