

Datasheet for ABIN185394

**anti-SLC6A4 antibody (Internal Region)****3** Images[Go to Product page](#)

## Overview

Quantity:	100 µg
Target:	SLC6A4
Binding Specificity:	Internal Region
Reactivity:	Human
Host:	Goat
Clonality:	Polyclonal
Conjugate:	This SLC6A4 antibody is un-conjugated
Application:	Western Blotting (WB), ELISA, Immunofluorescence (IF)

## Product Details

Purpose:	SLC6A4 / 5HTT / SERT
Immunogen:	Peptide with sequence C-LHQGERETWGK, from the internal region of the protein sequence according to NP_001036.1.
Sequence:	LHQGERETWG K
Isotype:	IgG
Cross-Reactivity:	Human, Mouse, Rat
Purification:	Purified from goat serum by ammonium sulphate precipitation followed by antigen affinity chromatography using the immunizing peptide.
Grade:	Verified

## Target Details

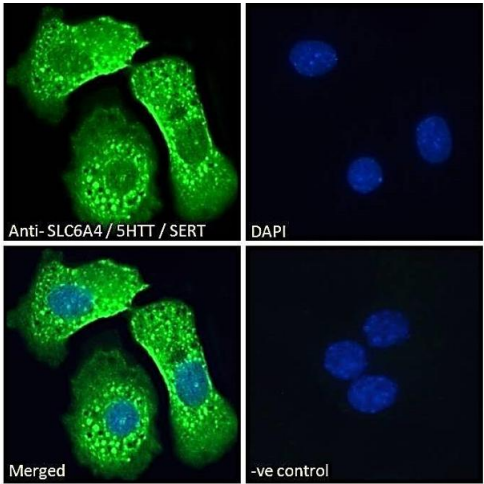
Target:	SLC6A4
Alternative Name:	SLC6A4 ( <a href="#">SLC6A4 Products</a> )
Background:	SLC6A4, SERT, solute carrier family 6 (neurotransmitter transporter, serotonin), member 4, HGNC:11050, 5-HTT, HTT, OCD1, hSERT, 5-hydroxytryptamine transporter, 5HT transporter, Na <sup>+</sup> /Cl <sup>-</sup> dependent serotonin transporter, serotonin transporter, sodium-depend
Gene ID:	6532
NCBI Accession:	<a href="#">NP_001036</a>

## Application Details

Application Notes:	Western Blot: Approx 70-75 kDa band observed in Human Colon lysates (calculated MW of 70.3 kDa according to NP_001036.1). Recommended concentration: 1-3 µg/mL. Primary incubation 1 hour at room temperature.  Peptide ELISA: antibody detection limit dilution 1:32000.
Comment:	<b>Immunofluorescence:</b> Strong expression of the protein seen in vesicles of HepG2 cells.  Recommended concentration: 10µg/ml.
Restrictions:	For Research Use only

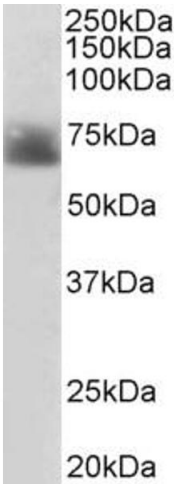
## Handling

Format:	Liquid
Concentration:	0.5 mg/mL
Buffer:	Supplied at 0.5 mg/mL in Tris saline, 0.02 % sodium azide, pH 7.3 with 0.5 % bovine serum albumin.
Preservative:	Sodium azide
Precaution of Use:	This product contains Sodium azide: a POISONOUS AND HAZARDOUS SUBSTANCE which should be handled by trained staff only.
Handling Advice:	Minimize freezing and thawing.
Storage:	-20 °C
Storage Comment:	Aliquot and store at -20°C, with minimal freeze/thawing. A working aliquot may be refrigerated at 4°C for a few weeks and still remain viable.



### Immunofluorescence

**Image 1.** ABIN185394 Immunofluorescence analysis of paraformaldehyde fixed HepG2 cells, permeabilized with 0.15% Triton. Primary incubation 1hr (10ug/ml) followed by Alexa Fluor 488 secondary antibody (2ug/ml), showing vesicle staining. The nuclear stain is DAPI (blue). Negative control: Unimmunized goat IgG (10ug/ml) followed by Alexa Fluor 488 secondary antibody (2ug/ml).



### Western Blotting

**Image 2.** ABIN185394 (2µg/ml) staining of Human Colon lysate (35µg protein in RIPA buffer). Detected by chemiluminescence.



### Western Blotting

**Image 3.** ABIN185394 staining (1µg/ml) of Human Duodenum lysate (RIPA buffer, 30µg total protein per lane). Primary incubated for 1 hour. Detected by western blot using chemiluminescence.