

Datasheet for ABIN185395
anti-Arrestin 3 antibody (Internal Region)

7 Images

2 Publications

[Go to Product page](#)

Overview

Quantity:	100 µg
Target:	Arrestin 3 (ARRB2)
Binding Specificity:	Internal Region
Reactivity:	Human
Host:	Goat
Clonality:	Polyclonal
Conjugate:	This Arrestin 3 antibody is un-conjugated
Application:	Western Blotting (WB), ELISA, Immunofluorescence (IF), Flow Cytometry (FACS)

Product Details

Purpose:	Arrestin beta 2
Immunogen:	Peptide with sequence C-HDHIPLRPQS, from the internal region of the protein sequence according to NP_004304.1, NP_945355.1.
Sequence:	HDHIPLRPQ S
Isotype:	IgG
Specificity:	This antibody is expected to recognise reported isoforms 1, 2, 3, 5, 6 and 7. No crossreactivity is expected with Arrestin beta 1.
Cross-Reactivity:	Human, Mouse, Rat
Purification:	Purified from goat serum by ammonium sulphate precipitation followed by antigen affinity chromatography using the immunizing peptide.

Product Details

Grade: Verified

Target Details

Target:	Arrestin 3 (ARRB2)
Alternative Name:	ARRB2 (ARRB2 Products)
Background:	ARRB2, arrestin, beta 2, HGNC:712, ARB2, ARR2, DKFZp686L0365, arrestin beta 2, beta-arrestin 2, BARR2, arrestin 3
Molecular Weight:	46.1kDa
Gene ID:	409, 216869, 25388
NCBI Accession:	NP_004304 , NP_945355 , NP_001244257 , NP_001244259 , NP_001244260
Pathways:	Intracellular Steroid Hormone Receptor Signaling Pathway , Regulation of Intracellular Steroid Hormone Receptor Signaling , cAMP Metabolic Process , Myometrial Relaxation and Contraction , Regulation of Leukocyte Mediated Immunity , Synaptic Membrane , Regulation of G-Protein Coupled Receptor Protein Signaling , CXCR4-mediated Signaling Events , Phototransduction , Thromboxane A2 Receptor Signaling

Application Details

Application Notes:	Western Blot: Approx 45 kDa band observed in lysates of cell lines A549 and U251 and in preliminary testing of KNRK cell lysate (calculated MW of 46.1 kDa according to NP_004304.1 and 44.4 kDa according to NP_945355.1) Recommended concentration: 0.5-1 µg/mL Peptide ELISA: antibody detection limit dilution 1:64000.
Comment:	Immunofluorescence: Strong expression of the protein seen in HeLa cells. Recommended concentration: 10µg/ml. Flow Cytometry: Flow cytometric analysis of A549 cells. Recommended concentration: 10ug/ml.
Restrictions:	For Research Use only

Handling

Format:	Liquid
Concentration:	0.5 mg/mL
Buffer:	Supplied at 0.5 mg/mL in Tris saline, 0.02 % sodium azide, pH 7.3 with 0.5 % bovine serum

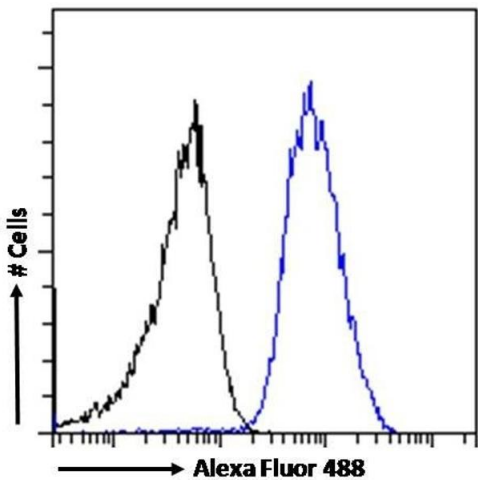
Handling

	albumin.
Preservative:	Sodium azide
Precaution of Use:	This product contains Sodium azide: a POISONOUS AND HAZARDOUS SUBSTANCE which should be handled by trained staff only.
Handling Advice:	Minimize freezing and thawing.
Storage:	-20 °C
Storage Comment:	Aliquot and store at -20°C, with minimal freeze/thawing. A working aliquot may be refrigerated at 4°C for a few weeks and still remain viable.

Publications

Product cited in:	Zakrzewicz, Krasteva, Wilhelm, Dietrich, Wilker, Padberg, Wygrecka, Grau: "Reduced expression of arrestin beta 2 by graft monocytes during acute rejection of rat kidneys." in: Immunobiology , Vol. 216, Issue 7, pp. 854-61, (2011) (PubMed).
	Napolitano, Pasqualetti, Usiello, Santini, Pacini, Sciamanna, Errico, Tassone, Di Dato, Martella, Cuomo, Fisone, Bernardi, Mandolesi, Mercuri, Standaert, Pisani: "Dopamine D2 receptor dysfunction is rescued by adenosine A2A receptor antagonism in a model of DYT1 dystonia." in: Neurobiology of disease , Vol. 38, Issue 3, pp. 434-45, (2010) (PubMed).

Images



Flow Cytometry

Image 1. (ABIN185395) Flow cytometric analysis of paraformaldehyde fixed A549 cells (blue line), permeabilized with 0.5 % Triton. Primary incubation 1hr (10 µg/mL) followed by Alexa Fluor 488 secondary antibody (1 µg/mL). IgG control: Unimmunized goat IgG (black line) fol

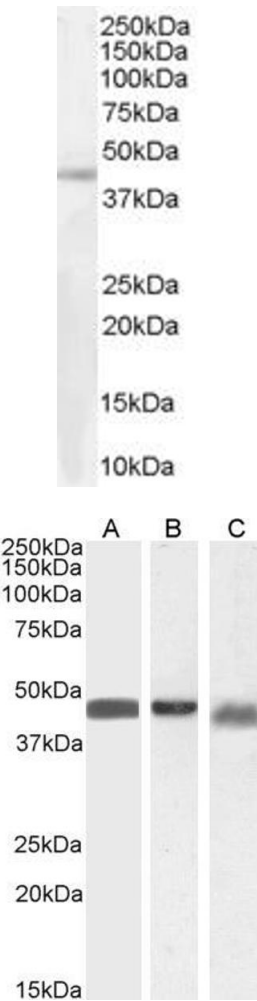
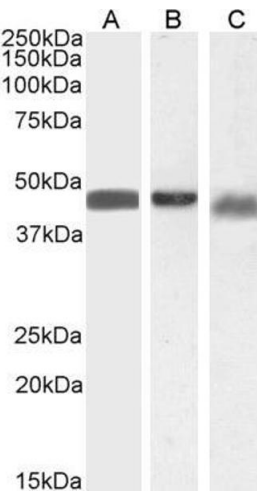


Image 2. ABIN185395 (0.03µg/ml) staining of Human Spleen lysate (35µg protein in RIPA buffer). Primary incubation was 1 hour. Detected by chemiluminescence.



Western Blotting

Image 3. ABIN185395 (0.1µg/ml) staining of Human Spleen (A), (1ug/ml) Mouse Brain (B) and (1ug/ml) Mouse Spleen (C) lysate (35µg protein in RIPA buffer). Detected by chemiluminescence.

Please check the [product details page](#) for more images. Overall 7 images are available for ABIN185395.