

Datasheet for ABIN185398
anti-DPP10 antibody (Internal Region)

3 Images

[Go to Product page](#)

Overview

Quantity:	100 µg
Target:	DPP10
Binding Specificity:	Internal Region
Reactivity:	Human
Host:	Goat
Clonality:	Polyclonal
Conjugate:	This DPP10 antibody is un-conjugated
Application:	Western Blotting (WB), ELISA, Immunohistochemistry (IHC)

Product Details

Purpose:	Dipeptidylpeptidase 10
Immunogen:	Peptide with sequence C-DEGHNVSEKSKYHL, from the internal region of the protein sequence according to NP_065919.2, NP_001004360.2.
Sequence:	DEGHNVSEKS KYHL
Isotype:	IgG
Specificity:	This antibody is expected to recognise both reported isoforms NP_065919.2 and NP_001004360.2.
Cross-Reactivity:	Cow, Dog, Human
Purification:	Purified from goat serum by ammonium sulphate precipitation followed by antigen affinity chromatography using the immunizing peptide.

Product Details

Grade: Verified

Target Details

Target: DPP10

Alternative Name: DPP10 ([DPP10 Products](#))

Background: DPP10, dipeptidylpeptidase 10, HGNC:20823, DPRP3 , dipeptidyl peptidase IV-related protein 3, dipeptidyl peptidase X, dipeptidyl peptidase-like protein 2, dipeptidyl-peptidase 10, DPL2, DPPY, OTTHUMP00000203618, dipeptidyl peptidase 10, dipeptidyl peptida

Gene ID: 57628

NCBI Accession: [NP_065919](#), [NP_001004360](#)

Application Details

Application Notes: Immunohistochemistry: Paraffin embedded Human Brain (Cortex and Cerebellum).
Recommended concentration: 3.75 µg/mL.
Western Blot: Approx 90 kDa band observed in Human Bone Marrow lysates (calculated MW of 90.0 kDa according to NP_065919.2 and of 90.1 according to NP_001004360.1).
Recommended concentration: 0.1-0.3 µg/mL.
Peptide ELISA: antibody detection limit dilution 1:32000.

Restrictions: For Research Use only

Handling

Format: Liquid

Concentration: 0.5 mg/mL

Buffer: Supplied at 0.5 mg/mL in Tris saline, 0.02 % sodium azide, pH 7.3 with 0.5 % bovine serum albumin.

Preservative: Sodium azide

Precaution of Use: This product contains Sodium azide: a POISONOUS AND HAZARDOUS SUBSTANCE which should be handled by trained staff only.

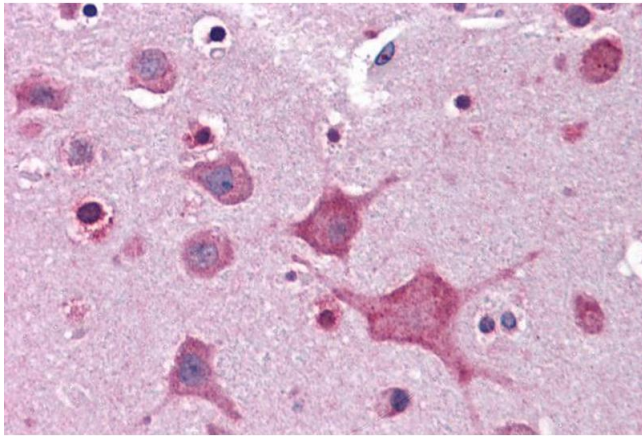
Handling Advice: Minimize freezing and thawing.

Storage: -20 °C

Handling

Storage Comment: Aliquot and store at -20°C, with minimal freeze/thawing. A working aliquot may be refrigerated at 4°C for a few weeks and still remain viable.

Images



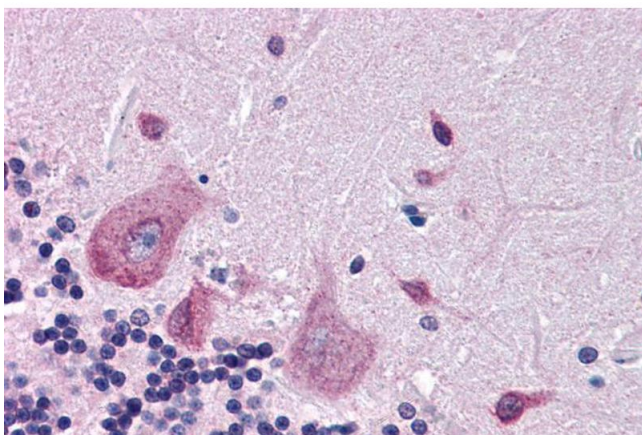
Immunohistochemistry

Image 1. ABIN185398 (3.75µg/ml) staining of paraffin embedded Human Cortex. Steamed antigen retrieval with citrate buffer pH 6, AP-staining.



Western Blotting

Image 2. ABIN185398 (0.1µg/ml) staining of Human Bone Marrow lysate (35µg protein in RIPA buffer). Primary incubation was 1 hour. Detected by chemiluminescence.



Immunohistochemistry

Image 3. ABIN185398 (3.75µg/ml) staining of paraffin embedded Human Cerebellum. Steamed antigen retrieval with citrate buffer pH 6, AP-staining.