

Datasheet for ABIN185401
anti-ADAM33 antibody (Internal Region)[Go to Product page](#)

1 Image

Overview

Quantity:	100 µg
Target:	ADAM33
Binding Specificity:	Internal Region
Reactivity:	Human
Host:	Goat
Clonality:	Polyclonal
Conjugate:	This ADAM33 antibody is un-conjugated
Application:	Western Blotting (WB), ELISA

Product Details

Purpose:	ADAM33
Immunogen:	Peptide with sequence CQSRRCRKNAFQEL, from the internal region of the protein sequence according to NP_079496.1.
Sequence:	CQSRRCRKNA FQEL
Isotype:	IgG
Specificity:	This antibody is expected to recognise isoform alpha (NP_079496.1) and not isoform beta (NP_694882.1).
Predicted Reactivity:	Human
Purification:	Purified from goat serum by ammonium sulphate precipitation followed by antigen affinity chromatography using the immunizing peptide.

Product Details

Grade: Verified

Target Details

Target: ADAM33

Alternative Name: ADAM33 ([ADAM33 Products](#))

Background: ADAM33, a disintegrin and metalloproteinase domain 33, HGNC:15478, DJ964F7.1, DKFZp434K0521, FLJ35308, FLJ36751, MGC71889, a disintegrin and metalloprotease 33, disintegrin and repolysin metalloproteinase family protein, metalloprotease disintegrin, ADAM metallopeptidase domain 33, RP5-964F7.2, C20orf153, MGC149823

Gene ID: 80332

NCBI Accession: [NP_079496](#)

Application Details

Application Notes: DS WB Results: Experiments gave bands at approx 80-90 kDa and strong ladder from 26 to 38 kDa in Human Prostate lysates after 0.3 µg/mL antibody staining. The observation of multiple bands and the 38 kDa band correspond to earlier findings in literature with different antibodies (Powell et al, Am J Respir Cell Mol Biol. 2004 Jul;31(1):13-21, PMID: 14742294). This protein has a calculated MW of 87.7 kDa according to NP_079496.1. Recommended concentration: 0.1-0.3 µg/mL.

Peptide ELISA: antibody detection limit dilution 1:64000.

Restrictions: For Research Use only

Handling

Format: Liquid

Concentration: 0.5 mg/mL

Buffer: Supplied at 0.5 mg/mL in Tris saline, 0.02 % sodium azide, pH 7.3 with 0.5 % bovine serum albumin.

Preservative: Sodium azide

Precaution of Use: This product contains Sodium azide: a POISONOUS AND HAZARDOUS SUBSTANCE which should be handled by trained staff only.

Handling Advice: Minimize freezing and thawing.

Handling

Storage:	-20 °C
Storage Comment:	Aliquot and store at -20°C, with minimal freeze/thawing. A working aliquot may be refrigerated at 4°C for a few weeks and still remain viable.

Images

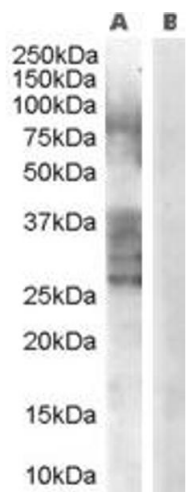


Image 1. ABIN185401 (0.3µg/ml) staining of Human Prostate lysate (35µg protein in RIPA buffer) with (B) and without (A) blocking with the immunising peptide. Primary incubation was 1 hour. Detected by chemiluminescence.