

Datasheet for ABIN185404  
**anti-FFAR1 antibody (C-Term)**[Go to Product page](#)

## 1 Image

## Overview

|                      |                                      |
|----------------------|--------------------------------------|
| Quantity:            | 100 µg                               |
| Target:              | FFAR1                                |
| Binding Specificity: | C-Term                               |
| Reactivity:          | Human                                |
| Host:                | Goat                                 |
| Clonality:           | Polyclonal                           |
| Conjugate:           | This FFAR1 antibody is un-conjugated |
| Application:         | Western Blotting (WB), ELISA         |

## Product Details

|                   |   |
|-------------------|---|
| Purpose:          | GPR40   |
| Immunogen:        | Peptide with sequence CAARTQGGKSQK, from the C Terminus of the protein sequence according to NP_005294.1.                             |
| Sequence:         | CAARTQGGKS QK   |
| Isotype:          | IgG   |
| Cross-Reactivity: | Human   |
| Purification:     | Purified from goat serum by ammonium sulphate precipitation followed by antigen affinity chromatography using the immunizing peptide. |
| Grade:            | Verified  |

## Target Details

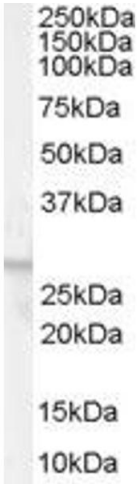
|                   |  |
|-------------------|--|
| Target:           | FFAR1  |
| Alternative Name: | FFAR1 ( <a href="#">FFAR1 Products</a> )   |
| Background:       | FFAR1, GPR40, G protein-coupled receptor 40 , HGNC:4498, free fatty acid receptor 1, FFA1R, GPCR40   |
| Gene ID:          | 2864   |
| NCBI Accession:   | <a href="#">NP_005294</a>  |
| Pathways:         | <a href="#">Positive Regulation of Peptide Hormone Secretion</a> , <a href="#">Hormone Transport</a> , <a href="#">Peptide Hormone Metabolism</a> , <a href="#">Carbohydrate Homeostasis</a> |

## Application Details

|                    |  |
|--------------------|--|
| Application Notes: | Western Blot: Approx 28 kDa band observed in Human Breast lysates (calculated MW of 31.5 kDa according to NP_005294.1). Recommended concentration: 0.01-0.03 µg/mL.<br>Peptide ELISA: antibody detection limit dilution 1:16000. |
| Restrictions:      | For Research Use only  |

## Handling

|                    |  |
|--------------------|--|
| Format:            | Liquid   |
| Concentration:     | 0.5 mg/mL  |
| Buffer:            | Supplied at 0.5 mg/mL in Tris saline, 0.02 % sodium azide, pH 7.3 with 0.5 % bovine serum albumin.   |
| Preservative:      | Sodium azide   |
| Precaution of Use: | This product contains Sodium azide: a POISONOUS AND HAZARDOUS SUBSTANCE which should be handled by trained staff only.                         |
| Handling Advice:   | Minimize freezing and thawing.   |
| Storage:           | -20 °C   |
| Storage Comment:   | Aliquot and store at -20°C, with minimal freeze/thawing. A working aliquot may be refrigerated at 4°C for a few weeks and still remain viable. |



**Image 1.** ABIN185404 (0.01µg/ml) staining of Human Breast lysate (35µg protein in RIPA buffer). Primary incubation was 1 hour. Detected by chemiluminescence.