

Datasheet for ABIN185405
anti-Lipocalin 2 antibody (Internal Region)



[Go to Product page](#)

2 Images

Overview

Quantity:	100 µg
Target:	Lipocalin 2 (LCN2)
Binding Specificity:	Internal Region
Reactivity:	Human
Host:	Goat
Clonality:	Polyclonal
Conjugate:	This Lipocalin 2 antibody is un-conjugated
Application:	Western Blotting (WB), ELISA, Immunohistochemistry (IHC)

Product Details

Purpose:	Lipocalin 2 / NGAL
Immunogen:	Peptide with sequence C-AILREDKDPQKMY, from the internal region of the protein sequence according to NP_005555.2.
Sequence:	AILREDKDPQ KMY
Isotype:	IgG
Cross-Reactivity:	Human
Purification:	Purified from goat serum by ammonium sulphate precipitation followed by antigen affinity chromatography using the immunizing peptide.
Grade:	Verified

Target Details

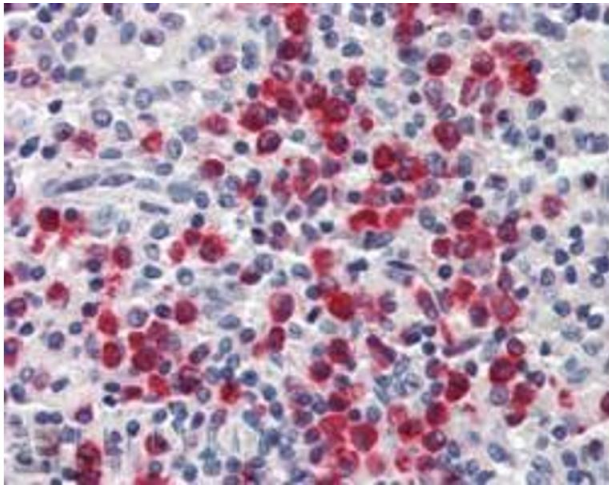
Target:	Lipocalin 2 (LCN2)
Alternative Name:	LCN2 (LCN2 Products)
Background:	LCN2, NGAL, lipocalin 2 (oncogene 24p3), HGNC:6526, uterocalin, oncogenic lipocalin 24p3, neutrophil gelatinase-associated lipocalin, lipocalin 2, MSFI, OTTHUMP00000022240, migration-stimulating factor inhibitor, neutrophil gelatinase-associated lipocalin
Gene ID:	3934
NCBI Accession:	NP_005555
Pathways:	Cellular Response to Molecule of Bacterial Origin , Transition Metal Ion Homeostasis

Application Details

Application Notes:	<p>Immunohistochemistry: In paraffin embedded Human Spleen shows staining of cytoplasm in mostly binucleated cells, and of nucleoli in some of the non-dividing cells. Recommended concentration: 2-3 µg/mL.</p> <p>Western Blot: Approx 22 kDa band observed in Human Kidney lysates (calculated MW of 22.6 kDa according to NP_005555.2). Recommended concentration: 0.01-0.03 µg/mL.</p> <p>Peptide ELISA: antibody detection limit dilution 1:16000.</p>
Restrictions:	For Research Use only

Handling

Format:	Liquid
Concentration:	0.5 mg/mL
Buffer:	Supplied at 0.5 mg/mL in Tris saline, 0.02 % sodium azide, pH 7.3 with 0.5 % bovine serum albumin.
Preservative:	Sodium azide
Precaution of Use:	This product contains Sodium azide: a POISONOUS AND HAZARDOUS SUBSTANCE which should be handled by trained staff only.
Handling Advice:	Minimize freezing and thawing.
Storage:	-20 °C
Storage Comment:	Aliquot and store at -20°C, with minimal freeze/thawing. A working aliquot may be refrigerated at 4°C for a few weeks and still remain viable.



Immunohistochemistry

Image 1. ABIN185405 (2.5µg/ml) staining of paraffin embedded Human Spleen. Steamed antigen retrieval with citrate buffer pH 6, AP-staining.



Image 2. ABIN185405 (0.03µg/ml) staining of Human Kidney lysate (35µg protein in RIPA buffer). Primary incubation was 1 hour. Detected by chemiluminescence.