



[Go to Product page](#)

Datasheet for ABIN185410

anti-LRP5 antibody (Internal Region)

3 Images

1 Publication

Overview

Quantity:	100 µg
Target:	LRP5
Binding Specificity:	Internal Region
Reactivity:	Human
Host:	Goat
Clonality:	Polyclonal
Conjugate:	This LRP5 antibody is un-conjugated
Application:	Western Blotting (WB), Immunohistochemistry (IHC), ELISA

Product Details

Purpose:	LRP5
Immunogen:	Peptide with sequence C-ERVEKTTGDKRT, from the internal region of the protein sequence according to NP_002326.2.
Sequence:	ERVEKTTGDK RT
Isotype:	IgG
Cross-Reactivity:	Human, Mouse, Rat
Purification:	Purified from goat serum by ammonium sulphate precipitation followed by antigen affinity chromatography using the immunizing peptide.
Grade:	Verified

Target Details

Target:	LRP5
Alternative Name:	LRP5 (LRP5 Products)
Background:	LRP5, low density lipoprotein receptor-related protein 5, HGNC:6697, BMND1, HBM, LR3, LRP7, OPPG, OPS, VBCH2, low density lipoprotein receptor-related protein 7, osteoporosis pseudoglioma syndrome, EVR1, EVR4, OPTA1, exudative vitreoretinopathy 1,
Gene ID:	4041
NCBI Accession:	NP_002326
Pathways:	WNT Signaling , Stem Cell Maintenance , Positive Regulation of fat Cell Differentiation

Application Details

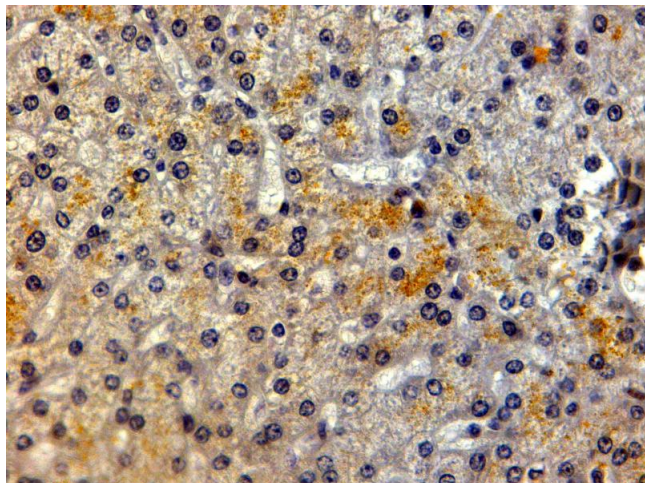
Application Notes:	<p>Immunohistochemistry: In paraffin embedded Human Liver shows weak cytoplasm staining in some hepatocytes. Recommended concentration: 2-4 µg/mL.</p> <p>Western Blot: Approx 180 kDa band observed in lysates of cell line HepG2 (calculated MW of 179 kDa according to NP_002326.2). Recommended concentration: 1-3 µg/mL. Primary incubation was 1 hour. Preliminary testing was unsuccessful on Mouse Liver for this p</p> <p>Peptide ELISA: antibody detection limit dilution 1:16000.</p>
Restrictions:	For Research Use only

Handling

Format:	Liquid
Concentration:	0.5 mg/mL
Buffer:	Supplied at 0.5 mg/mL in Tris saline, 0.02 % sodium azide, pH 7.3 with 0.5 % bovine serum albumin.
Preservative:	Sodium azide
Precaution of Use:	This product contains Sodium azide: a POISONOUS AND HAZARDOUS SUBSTANCE which should be handled by trained staff only.
Handling Advice:	Minimize freezing and thawing.
Storage:	-20 °C
Storage Comment:	Aliquot and store at -20°C, with minimal freeze/thawing. A working aliquot may be refrigerated at 4°C for a few weeks and still remain viable.

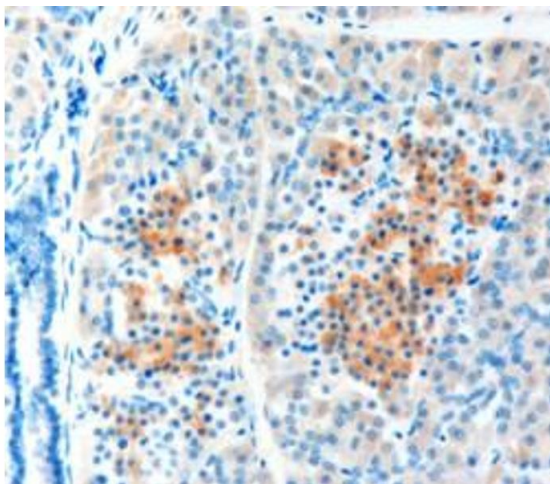
Product cited in: Dong, Li, Li, Ren, Fan, Weng: "MicroRNA-23a-3p inhibitor decreases osteonecrosis incidence in a rat model." in: **Molecular medicine reports**, Vol. 16, Issue 6, pp. 9331-9336, (2018) ([PubMed](#)).

Images



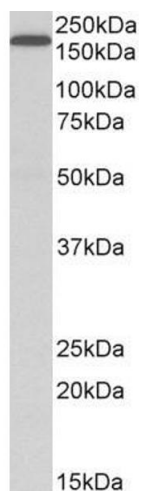
Immunohistochemistry

Image 1. ABIN185410 (2µg/ml) staining of paraffin embedded Human Liver. Steamed antigen retrieval with citrate buffer pH 6, HRP-staining.



Immunohistochemistry

Image 2. ABIN185410 (1µg/ml) staining of paraffin embedded Human Pancreas shows staining of cytoplasm in some cells of the islets of Langerhans.



Immunohistochemistry

Image 3. ABIN185410 (1µg/ml) staining of HepG2 lysate (35µg protein in RIPA buffer). Detected by chemiluminescence.