

Datasheet for ABIN185416
anti-ENPEP antibody (Internal Region)

2 Images

[Go to Product page](#)

Overview

Quantity:	100 µg
Target:	ENPEP
Binding Specificity:	Internal Region
Reactivity:	Human, Rat
Host:	Goat
Clonality:	Polyclonal
Conjugate:	This ENPEP antibody is un-conjugated
Application:	Western Blotting (WB), Immunohistochemistry (IHC), ELISA

Product Details

Purpose:	Aminopeptidase A
Immunogen:	Peptide with sequence C-EQYQKTSLAQEKEK, from the internal region of the protein sequence according to NP_001968.3.
Sequence:	EQYQKTSLAQ EKEK
Isotype:	IgG
Cross-Reactivity:	Cow, Dog, Human, Mouse, Pig, Rat
Purification:	Purified from goat serum by ammonium sulphate precipitation followed by antigen affinity chromatography using the immunizing peptide.
Grade:	Verified

Target Details

Target:	ENPEP
Alternative Name:	ENPEP (ENPEP Products)
Background:	Aminopeptidase A, ENPEP, glutamyl aminopeptidase (aminopeptidase A) , HGNC:3355, APA, gp160, CD249, glutamyl aminopeptidase
Gene ID:	2028, 13809
NCBI Accession:	NP_001968
Pathways:	Peptide Hormone Metabolism , Regulation of Systemic Arterial Blood Pressure by Hormones

Application Details

Application Notes:	Immunohistochemistry: In paraffin embedded Human Kidney shows staining of basement membrane and the mesangium in the glomerulus. Recommended concentration: 3-5 µg/mL. Western Blot: Approx 170 kDa band observed in Human Brain and Testis lysates (calculated MW of 109 kDa according to NP_001968.2). Primary incubation was for 1 hour. The observed molecular weight corresponds to earlier findings in literature with different Peptide ELISA: antibody detection limit dilution 1:64000.
Restrictions:	For Research Use only

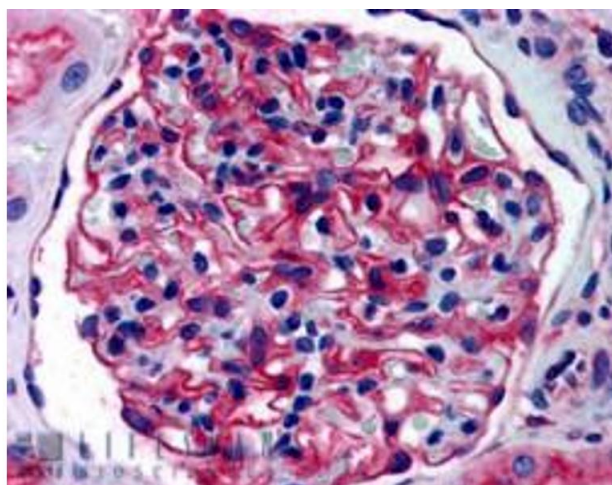
Handling

Format:	Liquid
Concentration:	0.5 mg/mL
Buffer:	Supplied at 0.5 mg/mL in Tris saline, 0.02 % sodium azide, pH 7.3 with 0.5 % bovine serum albumin.
Preservative:	Sodium azide
Precaution of Use:	This product contains Sodium azide: a POISONOUS AND HAZARDOUS SUBSTANCE which should be handled by trained staff only.
Handling Advice:	Minimize freezing and thawing.
Storage:	-20 °C
Storage Comment:	Aliquot and store at -20°C, with minimal freeze/thawing. A working aliquot may be refrigerated at 4°C for a few weeks and still remain viable.



Western Blotting

Image 1. ABIN185416 staining (1µg/ml) of Human Testis lysate (RIPA buffer, 30µg total protein per lane). Primary incubated for 1 hour. Detected by chemiluminescence.



Immunohistochemistry

Image 2. ABIN185416 (3.75µg/ml) staining of paraffin embedded Human Kidney. Steamed antigen retrieval with citrate buffer pH 6, AP-staining.