

Datasheet for ABIN185418  
**anti-GSTP1 antibody (Internal Region)**

## 3 Images

[Go to Product page](#)

## Overview

Quantity:	100 µg
Target:	GSTP1
Binding Specificity:	Internal Region
Reactivity:	Human, Mouse, Rat, Dog
Host:	Goat
Clonality:	Polyclonal
Conjugate:	This GSTP1 antibody is un-conjugated
Application:	Western Blotting (WB), ELISA, Immunohistochemistry (IHC), Immunofluorescence (IF), Flow Cytometry (FACS)

## Product Details

Purpose:	GST3 / GSTP1
Immunogen:	Peptide with sequence C-LADQGQSWKEEV, from the internal region of the protein sequence according to NP_000843.1.
Sequence:	LADQGQSWKE EV
Isotype:	IgG
Cross-Reactivity:	Cow, Dog, Human, Mouse, Rat
Purification:	Purified from goat serum by ammonium sulphate precipitation followed by antigen affinity chromatography using the immunizing peptide.
Grade:	Verified

## Target Details

Target:	GSTP1
Alternative Name:	GSTP1 ( <a href="#">GSTP1 Products</a> )
Background:	GSTP1, GST3, glutathione S-transferase pi , HGNC:4638, DFN7, FAEES3, PI, deafness, X-linked 7, fatty acid ethyl ester synthase III, glutathione transferase, glutathione S-transferase pi 1
Gene ID:	2950
NCBI Accession:	<a href="#">NP_000843</a>
Pathways:	<a href="#">Cellular Response to Molecule of Bacterial Origin</a>

## Application Details

Application Notes:	Immunohistochemistry: Paraffin embedded Human Prostate. Recommended concentration: 5 µg/mL.  Western Blot: Approx 25 kDa band observed in Human Kidney, Lung and Thymus lysates, lysates of cell lines HeLa, HEK293, Jurkat, CaCo-2, K562, NIH3T3, KNRK and MDCK, and, in nuclear lysates of cell lines HeLa, HEK293 and Jurkat (calculated MW of 23.4 kDa ac  Peptide ELISA: antibody detection limit dilution 1:32000.
Comment:	<b>Immunofluorescence:</b> Strong expression of the protein seen in the nuclei and cytoplasm of A431 and U2OS cells. Recommended concentration: 10µg/ml.  <b>Flow Cytometry:</b> Flow cytometric analysis of A431 cells. Recommended conc
Restrictions:	For Research Use only

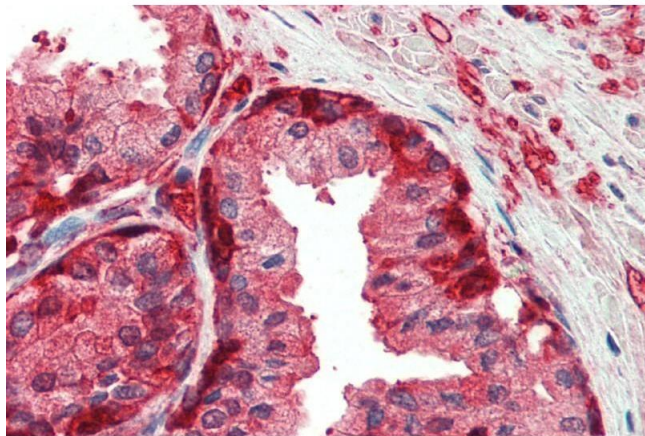
## Handling

Format:	Liquid
Concentration:	0.5 mg/mL
Buffer:	Supplied at 0.5 mg/mL in Tris saline, 0.02 % sodium azide, pH 7.3 with 0.5 % bovine serum albumin.
Preservative:	Sodium azide
Precaution of Use:	This product contains Sodium azide: a POISONOUS AND HAZARDOUS SUBSTANCE which should be handled by trained staff only.
Handling Advice:	Minimize freezing and thawing.
Storage:	-20 °C

## Handling

Storage Comment: Aliquot and store at -20°C, with minimal freeze/thawing. A working aliquot may be refrigerated at 4°C for a few weeks and still remain viable.

## Images



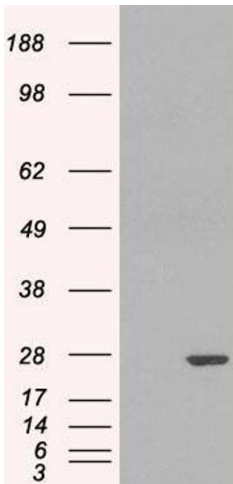
### Immunohistochemistry

**Image 1.** ABIN185418 (5µg/ml) staining of paraffin embedded Human Prostate. Steamed antigen retrieval with citrate buffer pH 6, AP-staining.



### Western Blotting

**Image 2.** ABIN185418 (0.01µg/ml) staining of Human Kidney lysate (35µg protein in RIPA buffer). Primary incubation was 1 hour. Detected by chemiluminescence.



### Western Blotting

**Image 3.** HEK293 overexpressing GSTP1 (ABIN5434700) and probed with ABIN185418 (mock transfection in first lane).