

Datasheet for ABIN185421  
**anti-Caveolin-1 antibody (Internal Region)**

## 9 Images

[Go to Product page](#)

## Overview

Quantity:	100 µg
Target:	Caveolin-1 (CAV1)
Binding Specificity:	Internal Region
Reactivity:	Human
Host:	Goat
Clonality:	Polyclonal
Conjugate:	This Caveolin-1 antibody is un-conjugated
Application:	Western Blotting (WB), ELISA, Immunohistochemistry (IHC), Immunofluorescence (IF), Flow Cytometry (FACS)

## Product Details

Purpose:	Caveolin 1
Immunogen:	Peptide with sequence C-DELSEKQVYDAH, from the internal region of the protein sequence according to NP_001744.2.
Sequence:	DELSEKQVYD AH
Isotype:	IgG
Specificity:	This antibody is expected to recognize both reported isoforms (NP_001744.2, NP_001166366.1). Reported variants represent identical protein: NP_001166367.1, NP_001166368.1, NP_001166366.1. No cross-reactivity expected to Caveolin 2 and Caveolin 3
Cross-Reactivity:	Dog, Human, Mouse, Pig, Rat

## Product Details

Purification:	Purified from goat serum by ammonium sulphate precipitation followed by antigen affinity chromatography using the immunizing peptide.
Grade:	Verified

## Target Details

Target:	Caveolin-1 (CAV1)
Alternative Name:	CAV1 ( <a href="#">CAV1 Products</a> )
Background:	CAV1, caveolin 1, caveolae protein, 22 kDa , HGNC:1527, CAV, MSTP085, VIP21, caveolae protein, 22-kD, caveolin 1, caveolin 1 caveolae protein, 22kD, caveolin 1, alpha isoform, caveolin 1, beta isoform, cell growth-inhibiting protein 32, BSCL3, CGL3, MSTP08
Gene ID:	857, 12389, 25404
NCBI Accession:	<a href="#">NP_001744</a> , <a href="#">NP_001166366</a>
Pathways:	<a href="#">Maintenance of Protein Location</a> , <a href="#">Signaling Events mediated by VEGFR1 and VEGFR2</a> , <a href="#">Negative Regulation of Transporter Activity</a> , <a href="#">VEGFR1 Specific Signals</a>

## Application Details

Application Notes:	Immunohistochemistry: Paraffin embedded Human Uterus. Recommended concentration: 2.5 µg/mL.  Western Blot: Approx 22 kDa band observed in lysates of cell lines A431 and A549 and in Human Heart lysates (calculated MW of 20.5 kDa according to NP_001744.2). Recommended concentration: 0.001-0.01 µg/mL. Primary incubation 1 hour at room temperature. Pre Peptide ELISA: antibody detection limit dilution 1:8000.
Comment:	<b>Immunofluorescence:</b> Strong expression of the protein seen in the Golgi and membranes of A431 cells and in the cytoplasm and Golgi of U2OS cells. Recommended concentration: 10µg/ml.  <b>Flow Cytometry:</b> Flow cytometric analy
Restrictions:	For Research Use only

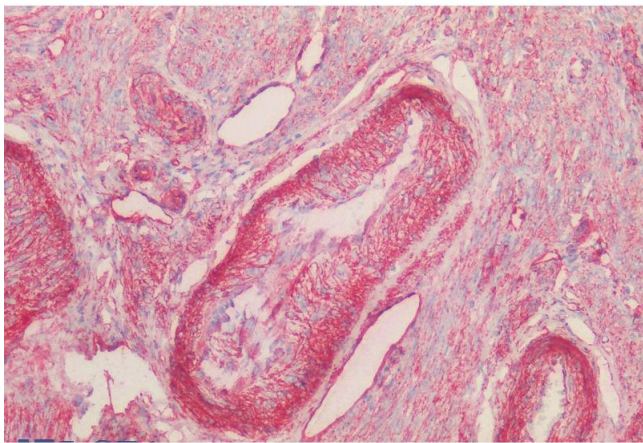
## Handling

Format:	Liquid
Concentration:	0.5 mg/mL

## Handling

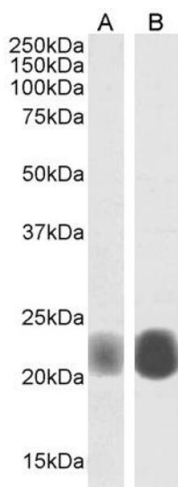
Buffer:	Supplied at 0.5 mg/mL in Tris saline, 0.02 % sodium azide, pH 7.3 with 0.5 % bovine serum albumin.
Preservative:	Sodium azide
Precaution of Use:	This product contains Sodium azide: a POISONOUS AND HAZARDOUS SUBSTANCE which should be handled by trained staff only.
Handling Advice:	Minimize freezing and thawing.
Storage:	-20 °C
Storage Comment:	Aliquot and store at -20°C, with minimal freeze/thawing. A working aliquot may be refrigerated at 4°C for a few weeks and still remain viable.

## Images



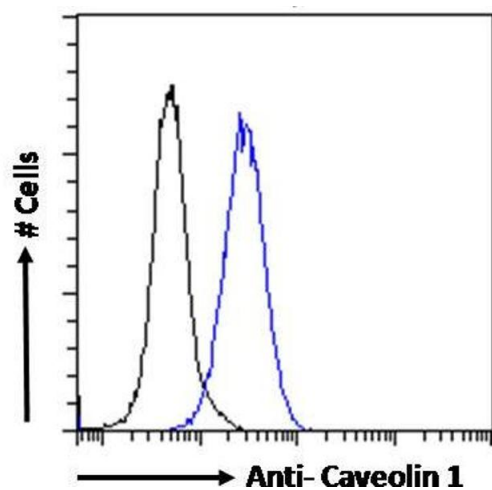
### Immunohistochemistry

**Image 1.** (ABIN185421) (2.5 µg/mL) staining of paraffin embedded Human Uterus. Steamed antigen retrieval with citrate buffer pH 6, AP-staining.



### Western Blotting

**Image 2.** ABIN185421 (0.003µg/ml) staining of A431 (A) and (0.001ug/ml) A549 cell lysate (35µg protein in RIPA buffer). Detected by chemiluminescence.



### Flow Cytometry

**Image 3.** ABIN185421 Flow cytometric analysis of paraformaldehyde fixed HeLa cells (blue line), permeabilized with 0.5% Triton. Primary incubation overnight (10ug/ml) followed by Alexa Fluor 488 secondary antibody (1ug/ml). IgG control: Unimmunized goat IgG (black line) followed by Alexa Fluor 488 secondary antibody.

Please check the [product details page](#) for more images. Overall 9 images are available for ABIN185421.