

Datasheet for ABIN185425
anti-Osteopontin antibody (C-Term)

4 Images

[Go to Product page](#)

Overview

Quantity:	100 µg
Target:	Osteopontin (SPP1)
Binding Specificity:	C-Term
Reactivity:	Human
Host:	Goat
Clonality:	Polyclonal
Conjugate:	This Osteopontin antibody is un-conjugated
Application:	Western Blotting (WB), ELISA

Product Details

Purpose:	Osteopontin / SPP1
Immunogen:	Peptide with sequence C-DPKSKEEDKHLK, from the C Terminus of the protein sequence according to NP_001035147.1, NP_000573.1, NP_001035149.1.
Sequence:	DPKSKEEDKH LK
Isotype:	IgG
Cross-Reactivity:	Dog, Human, Mouse, Rat
Purification:	Purified from goat serum by ammonium sulphate precipitation followed by antigen affinity chromatography using the immunizing peptide.
Grade:	Verified

Target Details

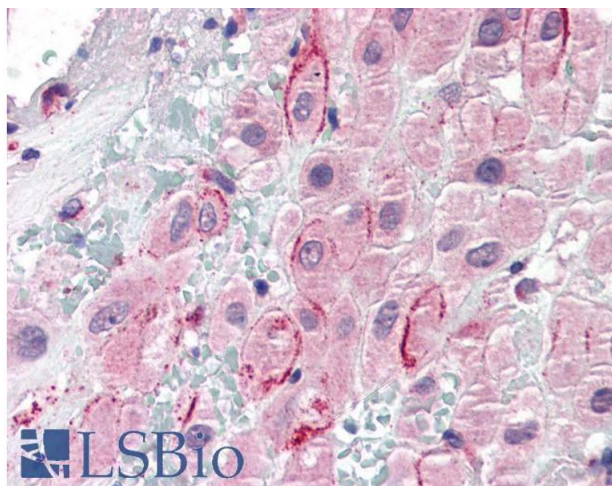
Target:	Osteopontin (SPP1)
Alternative Name:	SPP1 (SPP1 Products)
Background:	SPP1, HGNC:11255, secreted phosphoprotein 1 (osteopontin, bone sialoprotein I, early T-lymphocyte activation 1), BNSP, BSPI, ETA-1, MGC110940, OPN, Secreted phosphoprotein-1 (osteopontin, bone sialoprotein), secreted phosphoprotein 1, SPP1/CALPHA1 fusion,
Gene ID:	6696, 20750
NCBI Accession:	NP_001035147 , NP_000573 , NP_001035149
Pathways:	Regulation of Cell Size

Application Details

Application Notes:	Western Blot: Approx 35 kDa band observed in lysates of cell line MOLT4. This band corresponds to the cleavage product from the 60 kDa glycoprotein (calculated MW of 33.8 kDa according to NP_000573.1). Recommended concentration: 0.1-0.3 µg/mL. Peptide ELISA: antibody detection limit dilution 1:32000.
Restrictions:	For Research Use only

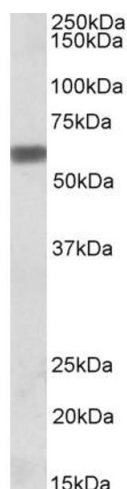
Handling

Format:	Liquid
Concentration:	0.5 mg/mL
Buffer:	Supplied at 0.5 mg/mL in Tris saline, 0.02 % sodium azide, pH 7.3 with 0.5 % bovine serum albumin.
Preservative:	Sodium azide
Precaution of Use:	This product contains Sodium azide: a POISONOUS AND HAZARDOUS SUBSTANCE which should be handled by trained staff only.
Handling Advice:	Minimize freezing and thawing.
Storage:	-20 °C
Storage Comment:	Aliquot and store at -20°C, with minimal freeze/thawing. A working aliquot may be refrigerated at 4°C for a few weeks and still remain viable.



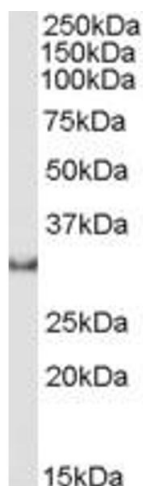
Immunohistochemistry

Image 1. ABIN185425 (5µg/ml) staining of paraffin embedded Human Placenta. Steamed antigen retrieval with citrate buffer pH 6, AP-staining. This data is from a previous batch, not on sale.



Western Blotting

Image 2. ABIN185425 (0.5µg/ml) staining of MOLT4 lysate (35µg protein in RIPA buffer). Detected by chemiluminescence.



Western Blotting

Image 3. ABIN185425 staining (1µg/ml) of MOLT4 cell lysate (RIPA buffer, 30µg total protein per lane). Primary incubated for 1 hour. Detected by western blot using chemiluminescence.

Please check the [product details page](#) for more images. Overall 4 images are available for ABIN185425.