

Datasheet for ABIN185427

anti-VPS11 antibody (Internal Region)**2** Images[Go to Product page](#)

Overview

Quantity:	100 µg
Target:	VPS11
Binding Specificity:	Internal Region
Reactivity:	Human
Host:	Goat
Clonality:	Polyclonal
Conjugate:	This VPS11 antibody is un-conjugated
Application:	ELISA, Immunohistochemistry (IHC)

Product Details

Purpose:	VPS11
Immunogen:	Peptide with sequence C-HALQEKDTQTKLE, from the internal region of the protein sequence according to NP_068375.3.
Sequence:	HALQEKDTQT KLE
Isotype:	IgG
Cross-Reactivity:	Cow, Dog, Human, Mouse, Rat
Purification:	Purified from goat serum by ammonium sulphate precipitation followed by antigen affinity chromatography using the immunizing peptide.
Grade:	Verified

Target Details

Target:	VPS11
Alternative Name:	VPS11 (VPS11 Products)
Background:	VPS11, vacuolar protein sorting 11 (yeast) , HGNC:14583, END1, PEP5, RNF108, hVPS11 , vacuolar protein sorting 11 (yeast homolog), vacuolar protein sorting protein 11, vacuolar protein sorting 11 homolog (S. cerevisiae)
Gene ID:	55823, 71732
NCBI Accession:	NP_068375
Pathways:	SARS-CoV-2 Protein Interactome

Application Details

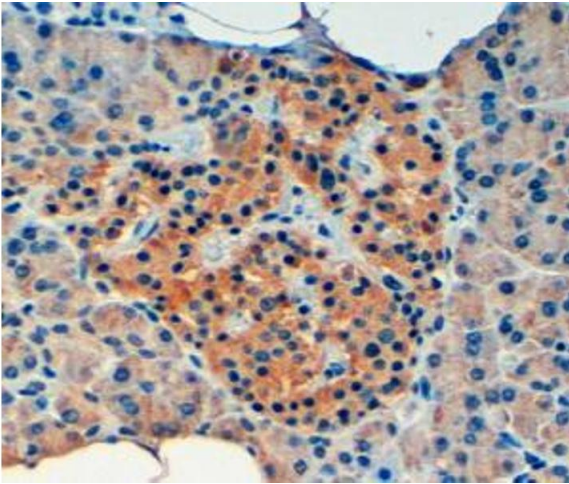
Application Notes:	<p>Immunohistochemistry: In paraffin embedded Human Kidney shows brushborder staining in PCT cells and Human Pancreas shows cytoplasm staining of beta cells in islets of Langerhans. Recommended concentration, 3-6 µg/mL.</p> <p>Western Blot: Preliminary experiments gave an approx 75 kDa band in human duodenum, colon and placenta lysates after 0.3 µg/mL antibody staining. Please note that currently we cannot find an explanation in the literature for the band we observe given the c</p> <p>Peptide ELISA: antibody detection limit dilution 1:32000.</p>
Restrictions:	For Research Use only

Handling

Format:	Liquid
Concentration:	0.5 mg/mL
Buffer:	Supplied at 0.5 mg/mL in Tris saline, 0.02 % sodium azide, pH 7.3 with 0.5 % bovine serum albumin.
Preservative:	Sodium azide
Precaution of Use:	This product contains Sodium azide: a POISONOUS AND HAZARDOUS SUBSTANCE which should be handled by trained staff only.
Handling Advice:	Minimize freezing and thawing.
Storage:	-20 °C
Storage Comment:	Aliquot and store at -20°C, with minimal freeze/thawing. A working aliquot may be refrigerated

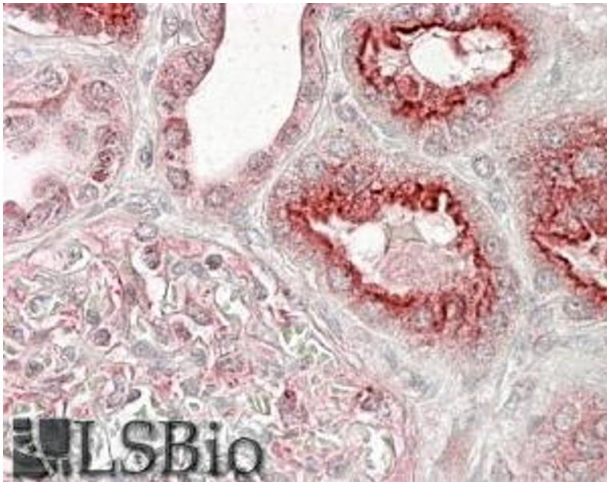
at 4°C for a few weeks and still remain viable.

Images



Immunohistochemistry

Image 1. ABIN185427 (4µg/ml) staining of paraffin embedded Human Pancreas. Steamed antigen retrieval with Tris/EDTA buffer pH 9, HRP-staining.



Immunohistochemistry

Image 2. ABIN185427 (3.8µg/ml) staining of paraffin embedded Human Kidney-. Steamed antigen retrieval with citrate buffer pH 6, AP-staining.