

Datasheet for ABIN185430  
**anti-VPS41 antibody (Internal Region)**[Go to Product page](#)

## 1 Image

## Overview

Quantity:	100 µg
Target:	VPS41
Binding Specificity:	Internal Region
Reactivity:	Human
Host:	Goat
Clonality:	Polyclonal
Conjugate:	This VPS41 antibody is un-conjugated
Application:	ELISA, Immunohistochemistry (IHC)

## Product Details

Purpose:	VPS41
Immunogen:	Peptide with sequence C-DHLKKDSQNKTLTK, from the internal region of the protein sequence according to NP_055211.2, NP_542198.2.
Sequence:	DHLKKDSQNK TLLK
Isotype:	IgG
Specificity:	This antibody is expected to recognise both reported isoforms (NP_055211.2 and NP_542198.2)
Cross-Reactivity:	Cow, Dog, Human, Mouse, Rat
Purification:	Purified from goat serum by ammonium sulphate precipitation followed by antigen affinity chromatography using the immunizing peptide.

## Product Details

Grade: Verified

## Target Details

Target:	VPS41
Alternative Name:	VPS41 ( <a href="#">VPS41 Products</a> )
Background:	VPS41, vacuolar protein sorting 41 (yeast) , HGNC:12713, HVSP41, vacuolar assembly protein 41, vacuolar protein sorting 41 (yeast homolog), vacuolar protein sorting 41 homolog (S. cerevisiae), HVPS41, hVps41p, vacuolar protein sorting 41
Molecular Weight:	48kDa
Gene ID:	27072
NCBI Accession:	<a href="#">NP_055211</a> , <a href="#">NP_542198</a>

## Application Details

Application Notes:	<p>Immunohistochemistry: In paraffin embedded Human Kidney shows staining of collective tubules. Recommended concentration: 4-6 µg/mL. Paraffin embedded Human Placenta and Prostate. Recommended concentration: 3.75 µg/mL.</p> <p>Western Blot: Preliminary experiments gave bands at approx 48 kDa and 28 kDa in human duodenum, kidney and placenta lysates after 1 µg/mL antibody staining. Please note that currently we cannot find an explanation in the literature for the bands we observe</p> <p>Peptide ELISA: antibody detection limit dilution 1:16000.</p>
Restrictions:	For Research Use only

## Handling

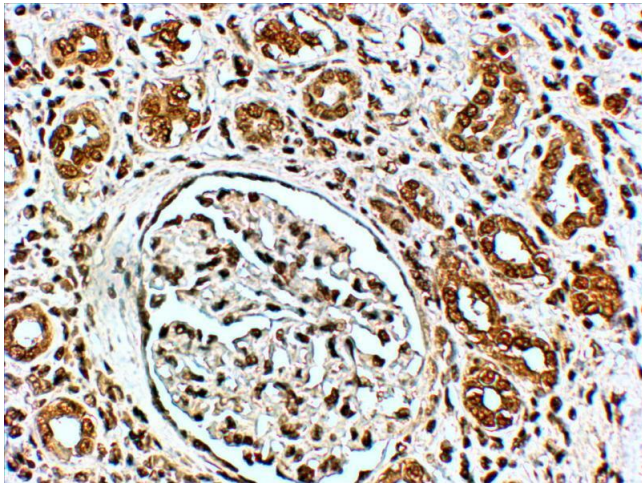
Format:	Liquid
Concentration:	0.5 mg/mL
Buffer:	Supplied at 0.5 mg/mL in Tris saline, 0.02 % sodium azide, pH 7.3 with 0.5 % bovine serum albumin.
Preservative:	Sodium azide
Precaution of Use:	This product contains Sodium azide: a POISONOUS AND HAZARDOUS SUBSTANCE which should be handled by trained staff only.
Handling Advice:	Minimize freezing and thawing.

## Handling

Storage: -20 °C

Storage Comment: Aliquot and store at -20°C, with minimal freeze/thawing. A working aliquot may be refrigerated at 4°C for a few weeks and still remain viable.

## Images



### Immunohistochemistry

**Image 1.** ABIN185430 (4µg/ml) staining of paraffin embedded Human Kidney. Steamed antigen retrieval with citrate buffer pH 6, HRP-staining. Similar results were obtained after antigen retrieval at pH9.