

Datasheet for ABIN185432

**anti-VPS37C antibody (Internal Region)****3** Images[Go to Product page](#)

## Overview

Quantity:	100 µg
Target:	VPS37C
Binding Specificity:	Internal Region
Reactivity:	Human
Host:	Goat
Clonality:	Polyclonal
Conjugate:	This VPS37C antibody is un-conjugated
Application:	Western Blotting (WB), ELISA, Immunohistochemistry (IHC)

## Product Details

Purpose:	VPS37C
Immunogen:	Peptide with sequence C-ETLKDKTLQEELQ, from the internal region of the protein sequence according to NP_060436.4.
Sequence:	ETLKDKTLQE LEELQ
Isotype:	IgG
Cross-Reactivity:	Human
Purification:	Purified from goat serum by ammonium sulphate precipitation followed by antigen affinity chromatography using the immunizing peptide.
Grade:	Verified

## Target Details

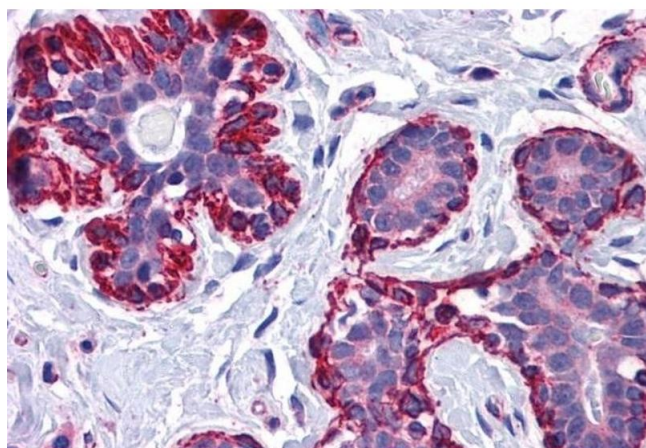
Target:	VPS37C
Alternative Name:	VPS37C ( <a href="#">VPS37C Products</a> )
Background:	VPS37C, vacuolar protein sorting 37C (yeast) , FLJ20847 , vacuolar protein sorting 37C, vacuolar protein sorting 37 homolog C (S. cerevisiae)
Gene ID:	55048
NCBI Accession:	<a href="#">NP_060436</a>

## Application Details

Application Notes:	Immunohistochemistry: Paraffin embedded Human Prostate and Breast. Recommended concentration: 3.75 µg/mL.  Western Blot: Approx 38 kDa band observed in human duodenum lysates (calculated MW of 38.7 kDa according to NP_060436.4). Recommended concentration: 0.03 - 0.1 µg/mL.  Peptide ELISA: antibody detection limit dilution 1:32000.
Restrictions:	For Research Use only

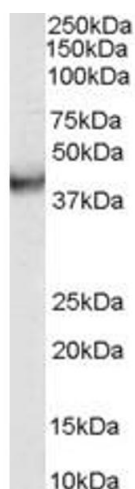
## Handling

Format:	Liquid
Concentration:	0.5 mg/mL
Buffer:	Supplied at 0.5 mg/mL in Tris saline, 0.02 % sodium azide, pH 7.3 with 0.5 % bovine serum albumin.
Preservative:	Sodium azide
Precaution of Use:	This product contains Sodium azide: a POISONOUS AND HAZARDOUS SUBSTANCE which should be handled by trained staff only.
Handling Advice:	Minimize freezing and thawing.
Storage:	-20 °C
Storage Comment:	Aliquot and store at -20°C, with minimal freeze/thawing. A working aliquot may be refrigerated at 4°C for a few weeks and still remain viable.



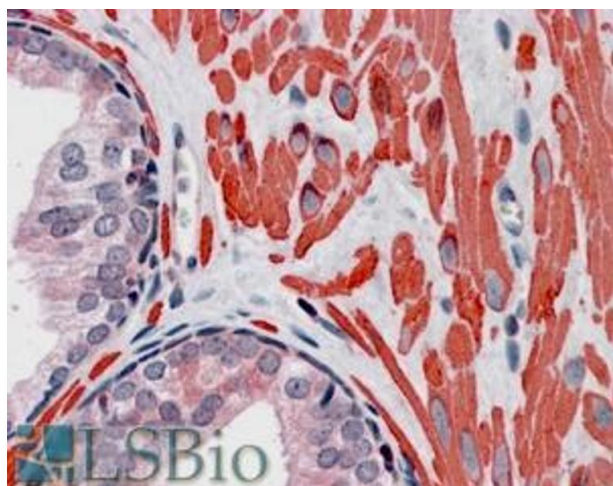
#### Immunohistochemistry

**Image 1.** ABIN185432 (3.75 µg/mL) staining of paraffin embedded Human Breast. Steamed antigen retrieval with citrate buffer pH 6, AP-staining.



#### Western Blotting

**Image 2.** ABIN185432 (0.03g/ml) staining of human duodenum lysate (35µg protein in RIPA buffer). Primary incubation was 1 hour. Detected by chemiluminescence.



#### Immunohistochemistry

**Image 3.** ABIN185432 (3.8µg/ml) staining of paraffin embedded Human Prostate. Steamed antigen retrieval with citrate buffer pH 6, AP-staining.