

Datasheet for ABIN185435  
**anti-KLRK1 antibody (Internal Region)**

## 2 Images

[Go to Product page](#)

## Overview

Quantity:	100 µg
Target:	KLRK1
Binding Specificity:	Internal Region
Reactivity:	Human
Host:	Goat
Clonality:	Polyclonal
Conjugate:	This KLRK1 antibody is un-conjugated
Application:	Western Blotting (WB), Flow Cytometry (FACS), ELISA

## Product Details

Purpose:	NKG2D / KLRK1
Immunogen:	Peptide with sequence C-KVYSKEDQDLLK, from the internal region of the protein sequence according to NP_031386.2.
Sequence:	KVYSKEDQDL LK
Isotype:	IgG
Cross-Reactivity:	Human, Mouse, Rat
Purification:	Purified from goat serum by ammonium sulphate precipitation followed by antigen affinity chromatography using the immunizing peptide.
Grade:	Verified

### Target Details

Target:	KLRK1
Alternative Name:	KLRK1 ( <a href="#">KLRK1 Products</a> )
Background:	KLRK1, NKG2-D, killer cell lectin-like receptor subfamily K, member 1, HGNC:18788, D12S2489E, KLR, NK cell receptor D, NKG2-D type II integral membrane protein, CD314, D12S2489E, FLJ17759, FLJ75772, NKG2D
Gene ID:	22914
NCBI Accession:	<a href="#">NP_031386</a>
Pathways:	<a href="#">Activation of Innate immune Response</a> , <a href="#">Cellular Response to Molecule of Bacterial Origin</a> , <a href="#">Regulation of Leukocyte Mediated Immunity</a> , <a href="#">Positive Regulation of Immune Effector Process</a>

### Application Details

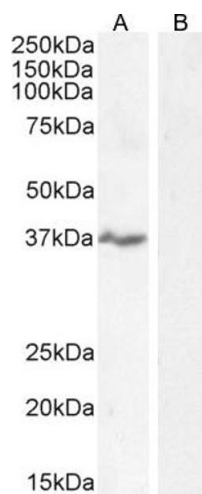
Application Notes:	Western Blot: Approx 36-37 kDa band observed in lysates of cell line MOLT4 (calculated MW of 25.3 kDa according to NP_031386.2). This molecular weight is routinely observed by other sources, and was successfully blocked by incubation with the immunising peptide Peptide ELISA: antibody detection limit dilution 1:64000.
Comment:	<b>Flow Cytometry:</b> Flow cytometric analysis showing the expression of NKG2D on a subset of CD56 <sup>+</sup> CD3 <sup>-</sup> NK cells. Recommended concentration: 10ug/ml.
Restrictions:	For Research Use only

### Handling

Format:	Liquid
Concentration:	0.5 mg/mL
Buffer:	Supplied at 0.5 mg/mL in Tris saline, 0.02 % sodium azide, pH 7.3 with 0.5 % bovine serum albumin.
Preservative:	Sodium azide
Precaution of Use:	This product contains Sodium azide: a POISONOUS AND HAZARDOUS SUBSTANCE which should be handled by trained staff only.
Handling Advice:	Minimize freezing and thawing.
Storage:	-20 °C
Storage Comment:	Aliquot and store at -20°C, with minimal freeze/thawing. A working aliquot may be refrigerated

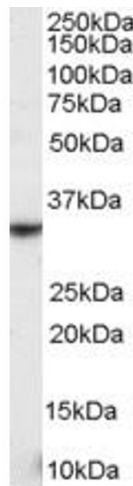
at 4°C for a few weeks and still remain viable.

Images



Western Blotting

**Image 1.** (ABIN185435) staining (0.5 µg/mL) of MOLT-4 cell lysate (A) + peptide (B). (35 µg protein in RIPA buffer). Detected by chemiluminescence.



Western Blotting

**Image 2.** ABIN185435 staining (0.3µg/ml) of human spleen lysate (RIPA buffer, 35µg total protein per lane). Primary incubated for 1 hour. Detected by western blot using chemiluminescence.