

Datasheet for ABIN185437

anti-Complement Factor H antibody (Internal Region)

5 Images

1 Publication

[Go to Product page](#)

Overview

Quantity:	100 µg
Target:	Complement Factor H (CFH)
Binding Specificity:	Internal Region
Reactivity:	Human
Host:	Goat
Clonality:	Polyclonal
Conjugate:	This Complement Factor H antibody is un-conjugated
Application:	Western Blotting (WB), Immunohistochemistry (IHC), ELISA, Flow Cytometry (FACS)

Product Details

Purpose:	Complement factor H
Immunogen:	Peptide with sequence C-HLVPDRKKDQYK, from the internal region of the protein sequence according to NP_000177.2.
Sequence:	HLVPDRKKDQ YK
Isotype:	IgG
Specificity:	This antibody is expected to recognize isoform a (NP_000177.2) only.
Cross-Reactivity:	Human
Purification:	Purified from goat serum by ammonium sulphate precipitation followed by antigen affinity chromatography using the immunizing peptide.
Grade:	Verified

Target Details

Target:	Complement Factor H (CFH)
Alternative Name:	CFH (CFH Products)
Background:	Complement factor H , HGNC:4883, CFH, CFHL3, FHL1, HF, HF1, HF2, HUS, H factor 1 (complement), H factor 2 (complement), H factor-1 (complement), factor H-like 1, AHUS1, ARMD4, ARMS1, FH, age-related maculopathy susceptibility 1, beta-1-H-globulin, beta-1H
Gene ID:	3075
NCBI Accession:	NP_000177
Pathways:	Complement System , Cellular Response to Molecule of Bacterial Origin

Application Details

Application Notes:	Immunohistochemistry: Paraffin embedded Human Liver. Recommended concentration: 5 µg/mL. Western Blot: Approx 150 kDa band observed in Human Kidney lysates and in lysates of cell line K562 (calculated MW of 139 kDa according to NP_000177.2). This molecular weight is routinely observed by other sources. Recommended concentration: 0.03-0.3 µg/mL. Peptide ELISA: antibody detection limit dilution 1:32000.
Comment:	Flow Cytometry: Flow cytometric analysis of HepG2 cells. Recommended concentration: 10ug/ml.
Restrictions:	For Research Use only

Handling

Format:	Liquid
Concentration:	0.5 mg/mL
Buffer:	Supplied at 0.5 mg/mL in Tris saline, 0.02 % sodium azide, pH 7.3 with 0.5 % bovine serum albumin.
Preservative:	Sodium azide
Precaution of Use:	This product contains Sodium azide: a POISONOUS AND HAZARDOUS SUBSTANCE which should be handled by trained staff only.
Handling Advice:	Minimize freezing and thawing.
Storage:	-20 °C

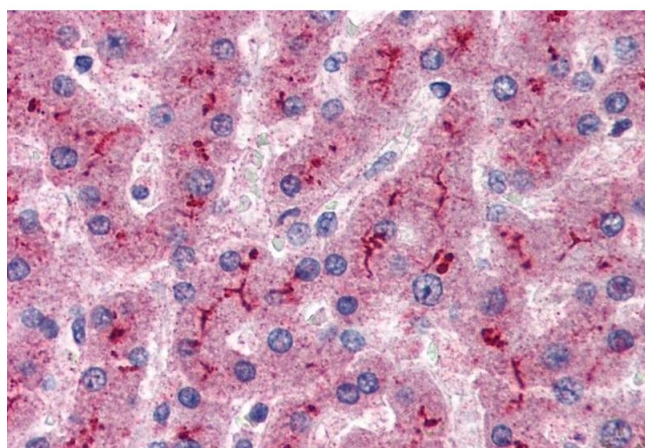
Handling

Storage Comment: Aliquot and store at -20°C, with minimal freeze/thawing. A working aliquot may be refrigerated at 4°C for a few weeks and still remain viable.

Publications

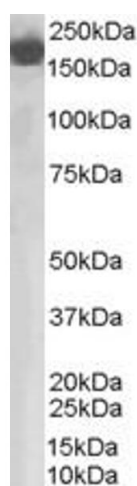
Product cited in: Fujisawa, Yasumoto, Kato, Sugawara, Yoshida, Yatomi, Nangaku: "The role of anti-complement factor H antibodies in the development of atypical haemolytic uremic syndrome: a possible contribution to abnormality of platelet function." in: **British journal of haematology**, Vol. 189, Issue 1, pp. 182-186, (2020) ([PubMed](#)).

Images



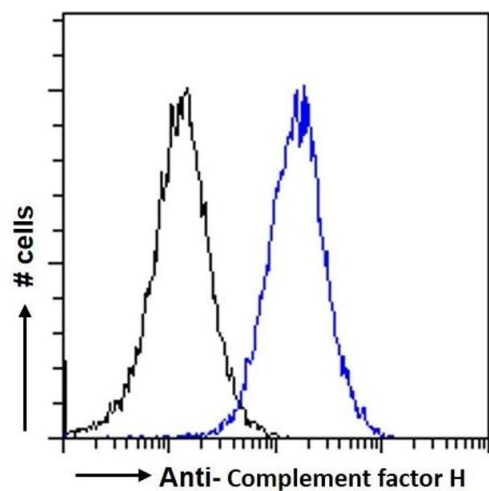
Immunohistochemistry

Image 1. ABIN185437 (5 µg/mL) staining of paraffin embedded Human Liver. Steamed antigen retrieval with citrate buffer pH 6, AP-staining.



Western Blotting

Image 2. ABIN185437 staining (0.03 µg/ml) of Human Lung lysate (RIPA buffer, 35 µg total protein per lane). Detected by chemiluminescence.



Flow Cytometry

Image 3. ABIN185437 Flow cytometric analysis of paraformaldehyde fixed HepG2 cells (blue line), permeabilized with 0.5 % Triton. Primary incubation 1hr (10 μ g/mL) followed by Alexa Fluor 488 secondary antibody (1 μ g/mL). IgG control: Unimmunized goat IgG (black line) fo

Please check the [product details page](#) for more images. Overall 5 images are available for ABIN185437.