

Datasheet for ABIN185439  
**anti-RHPN2 antibody (Internal Region)**



[Go to Product page](#)

1 Image

### Overview

Quantity:	100 µg
Target:	RHPN2
Binding Specificity:	Internal Region
Reactivity:	Human
Host:	Goat
Clonality:	Polyclonal
Conjugate:	This RHPN2 antibody is un-conjugated
Application:	ELISA, Immunohistochemistry (IHC)

### Product Details

Purpose:	Rhophilin 2 (Internal)
Immunogen:	Peptide with sequence C-TNKNRQKSAST, from the internal region of the protein sequence according to NP_149094.3.
Sequence:	TNKNRQKSAS T
Isotype:	IgG
Cross-Reactivity:	Cow, Human, Mouse, Rat
Purification:	Purified from goat serum by ammonium sulphate precipitation followed by antigen affinity chromatography using the immunizing peptide.
Grade:	Verified

## Target Details

---

Target:	RHPN2
Alternative Name:	RHPN2 ( <a href="#">RHPN2 Products</a> )
Background:	RHPN2, p76RBE, rhophilin, Rho GTPase binding protein 2, rhophilin 2, rhophilin-2, RhoB effector, rhophilin-like protein, P76RBE, RHOBP, 76 kDa RhoB effector protein, GTP-Rho-binding protein 2, rhophilin-like Rho-GTPase binding protein
Gene ID:	85415
NCBI Accession:	<a href="#">NP_149094</a>

## Application Details

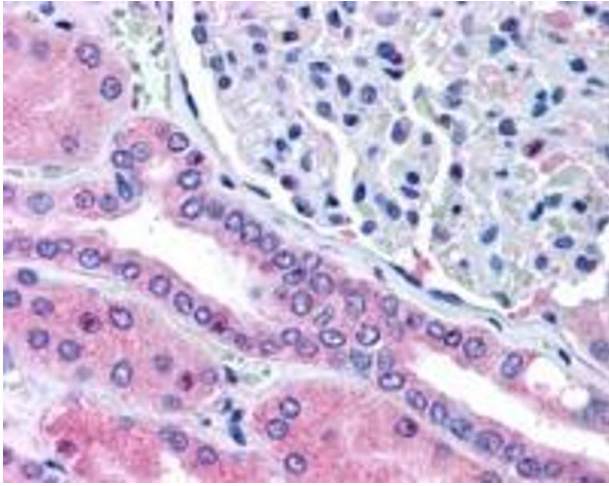
---

Application Notes:	<p>Immunohistochemistry: In paraffin embedded Human Kidney shows staining of cellular membrane and cytoplasm in convoluted tubular cells. Recommended concentration 5-10 µg/mL.</p> <p>Western Blot: Preliminary experiments gave an approx 35 kDa band in Human Pancreas and Prostate lysates after 0.3 µg/mL antibody staining. Please note that currently we cannot find an explanation in the literature for the band we observe given the calculated</p> <p>Peptide ELISA: antibody detection limit dilution 1:32000.</p>
Restrictions:	For Research Use only

## Handling

---

Format:	Liquid
Concentration:	0.5 mg/mL
Buffer:	Supplied at 0.5 mg/mL in Tris saline, 0.02 % sodium azide, pH 7.3 with 0.5 % bovine serum albumin.
Preservative:	Sodium azide
Precaution of Use:	This product contains Sodium azide: a POISONOUS AND HAZARDOUS SUBSTANCE which should be handled by trained staff only.
Handling Advice:	Minimize freezing and thawing.
Storage:	-20 °C
Storage Comment:	Aliquot and store at -20°C, with minimal freeze/thawing. A working aliquot may be refrigerated at 4°C for a few weeks and still remain viable.



#### Immunohistochemistry

**Image 1.** ABIN185439 (5 $\mu$ g/ml) staining of paraffin embedded Human Kidney. Steamed antigen retrieval with citrate buffer pH 6, AP-staining.