

Datasheet for ABIN185441
anti-DAZL antibody (Internal Region)

3 Images

[Go to Product page](#)

Overview

Quantity:	100 µg
Target:	DAZL
Binding Specificity:	Internal Region
Reactivity:	Rat
Host:	Goat
Clonality:	Polyclonal
Conjugate:	This DAZL antibody is un-conjugated
Application:	Western Blotting (WB), ELISA

Product Details

Purpose:	DAZL
Immunogen:	Peptide with sequence C-GNGPQKKSVD R, from the internal region of the protein sequence according to NP_001342.2.
Sequence:	GNGPQKKSVD R
Isotype:	IgG
Cross-Reactivity:	Cow, Dog, Human, Mouse, Rat
Purification:	Purified from goat serum by ammonium sulphate precipitation followed by antigen affinity chromatography using the immunizing peptide.
Grade:	Verified

Target Details

Target:	DAZL
Alternative Name:	DAZL (DAZL Products)
Background:	DAZL, deleted in azoospermia-like , HGNC:2685, DAZH, DAZL1, DAZLA, MGC26406, SPGYLA, deleted in azoospermia-like autosomal, germline specific RNA binding protein, spermatogenesis gene on the Y-like autosomal
Gene ID:	1618
NCBI Accession:	NP_001342

Application Details

Application Notes:	Western Blot: Approx 38 kDa band observed in Rat Testis lysates (calculated MW of 31.4 kDa according to NP_001102884.1). This molecular weight is routinely observed by other sources. Recommended concentration: 0.5-1 µg/mL. Primary incubation was 1 hour. Pre Peptide ELISA: antibody detection limit dilution 1:32000.
Restrictions:	For Research Use only

Handling

Format:	Liquid
Concentration:	0.5 mg/mL
Buffer:	Supplied at 0.5 mg/mL in Tris saline, 0.02 % sodium azide, pH 7.3 with 0.5 % bovine serum albumin.
Preservative:	Sodium azide
Precaution of Use:	This product contains Sodium azide: a POISONOUS AND HAZARDOUS SUBSTANCE which should be handled by trained staff only.
Handling Advice:	Minimize freezing and thawing.
Storage:	-20 °C
Storage Comment:	Aliquot and store at -20°C, with minimal freeze/thawing. A working aliquot may be refrigerated at 4°C for a few weeks and still remain viable.

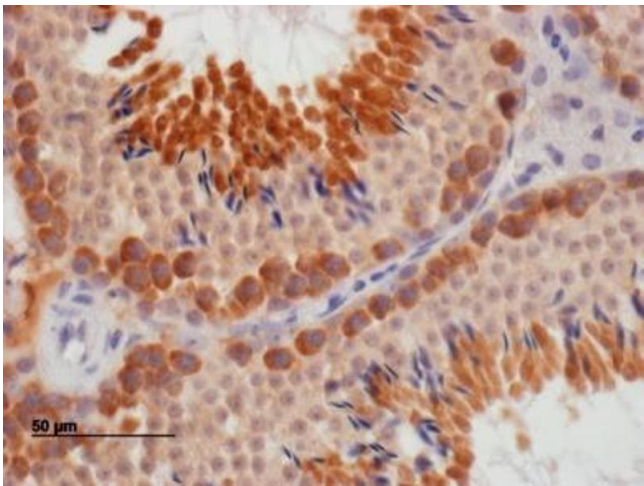


Image 1. ABIN185441 (0.1µg/ml) staining of human ovary lysate (35µg protein in RIPA buffer). Primary incubation was 1 hour. Detected by chemiluminescence.



Western Blotting

Image 2. ABIN185441 (1µg/ml) staining of Rat Testes lysate (35µg protein in RIPA buffer). Detected by chemiluminescence.



Immunohistochemistry

Image 3. ABIN185441 staining of paraffin embedded Mouse Testis. This data is from a previous batch, not on sale.